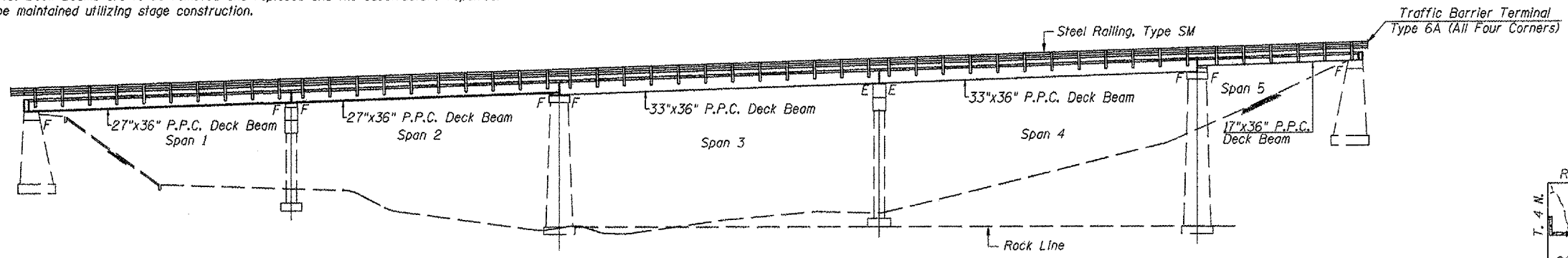


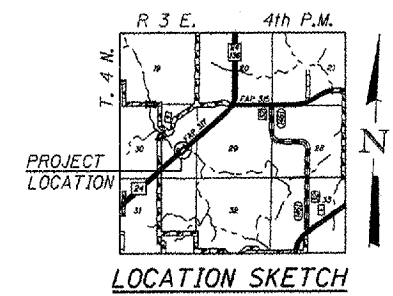
F.A.P. RTE.	SECTION	COUNTY	TOTAL SHEETS	SHEET NO.
317	(18B)1	FULTON	50	11
STA. 252+75		TO STA. 262+40		
FED. ROAD DIST. NO. 4 ILLINOIS FED. AID PROJECT				

Benchmark: Chiseled "d" on Northeast Wingwall of Structure - Elev. 477.56
 Existing Structure: Built as S.B.I. Rte 31 Sec 18B in 1926 Sta. 258+05
 Sec 18-1F in 1939 Sta. 256+77
 Sec 18B-1 in 1964 Sta. 258+05
 Sec 18BRY-2 in 1970 Sta. 256+77
 Sec 18(BRY-2)1 in 1993 Sta. 256+77

Proposed Improvement: Existing P.P.C. Deck Beams are to be removed and replaced and the substructure repaired.
 Traffic to be maintained utilizing stage construction.
 No Salvage

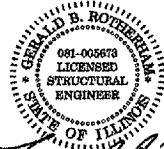


ELEVATION



INDEX OF SHEETS

1. General Plan and Elevation
2. General Notes and Bill of Material
3. Stage Construction Details
4. Temporary Concrete Barrier For Stage Construction
5. Deck Beam Details - Spans 1 & 2
6. Deck Beam Details - Spans 3 & 4
7. Deck Beam Details - Span 5
8. Superstructure
9. Superstructure Details
10. Steel Railing, Type SM With Concrete Wearing Surface
11. Pier 1 Removal & Repair
12. Pier 2 Removal & Repair
13. Pier 3 Removal & Repair
14. Pier 4 Removal & Repair
15. Substructure Details
16. Bar Splicer Assembly Details



Gerald B. Rothman
 August 22, 2007
 Expires: 11/30/2008

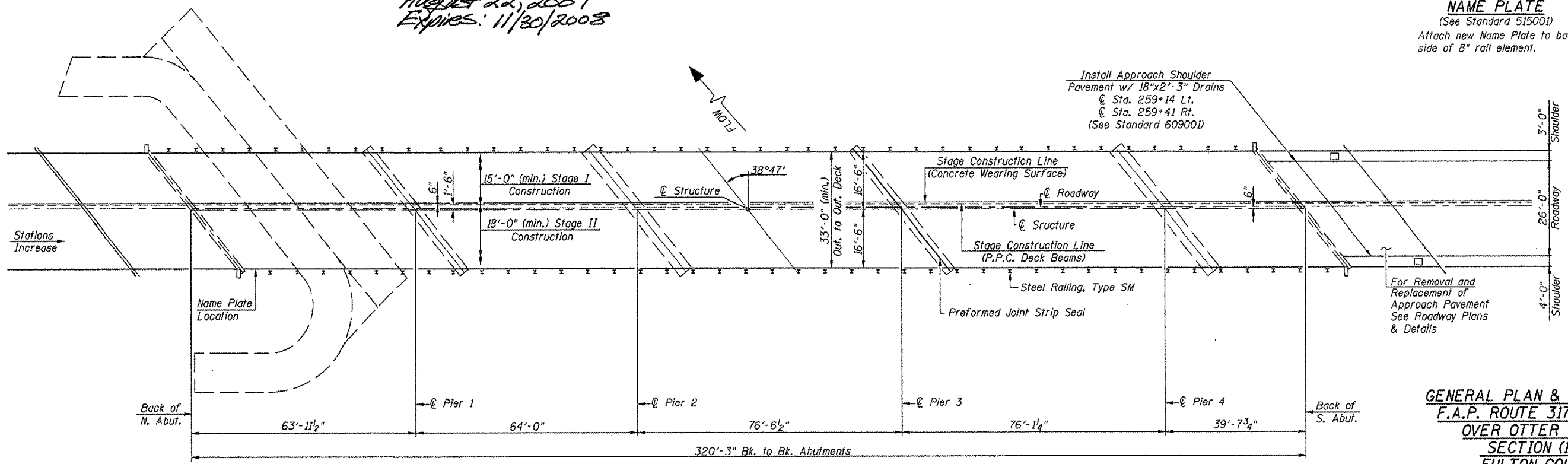
APPROVED
 For Structural Adequacy Only

Ralph E. Anderson (TJD)
 Engineer of Bridges & Structures

STA. 257+54.33
 REBUILT 20 BY
 STATE OF ILLINOIS
 F.A.P. ROUTE 317 SEC. (18B)1
 LOADING HS20-44
 STR. NO. 029-0005

NAME PLATE

(See Standard 515001)
 Attach new Name Plate to back side of 8" rail element.



PLAN

GENERAL PLAN & ELEVATION
 F.A.P. ROUTE 317 (U.S. 24)
 OVER OTTER CREEK
 SECTION (18B)1
 FULTON COUNTY
 STATION 257+54.33
 STRUCTURE NO. 029-0005

Designed: F.L.L.
 Checked: G.B.R.
 Drawn: M.J.S.
 Checked: G.B.R.

PLOT DATE = 8/24/07
 FILE NAME = 18B1.PLS
 MODEL NAME = 18B1.DWG