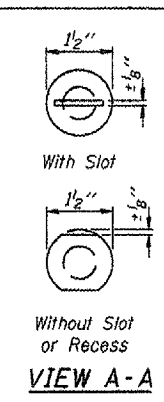
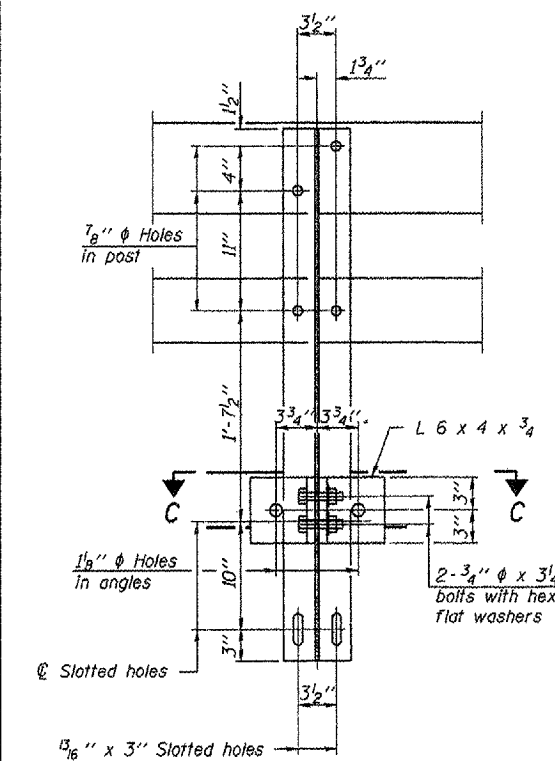


DETAIL OF 3/4" ϕ ROUND HEAD BOLT

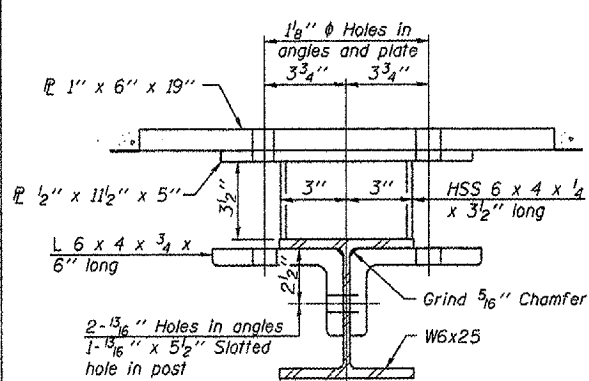


VIEW A-A

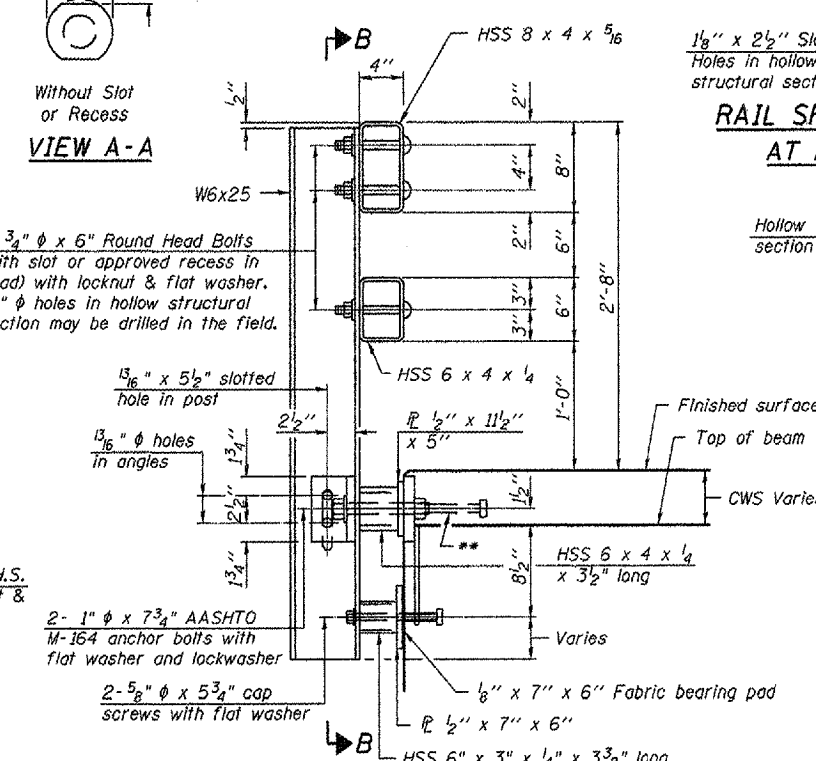
4-3/4" ϕ x 6" Round Head Bolts (With slot or approved recess in head) with locknut & flat washer. 7/8" ϕ holes in hollow structural section may be drilled in the field.



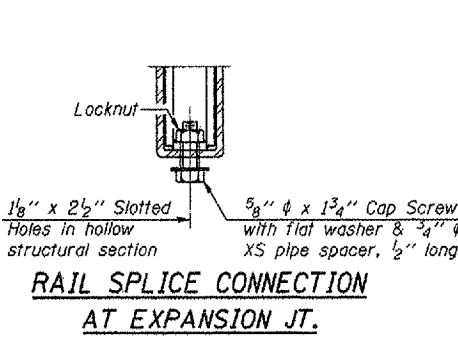
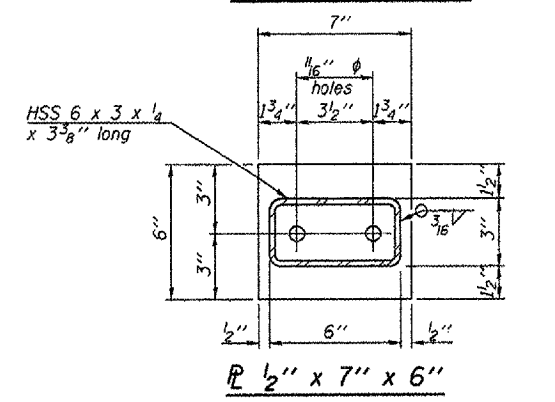
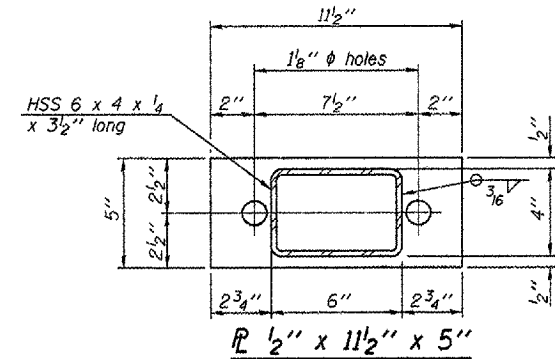
SECTION B-B



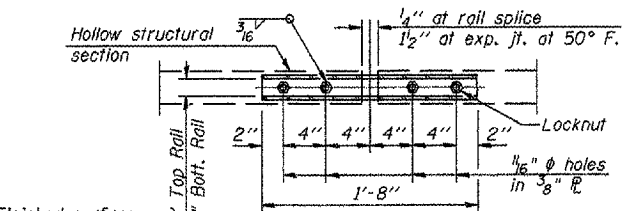
SECTION C-C



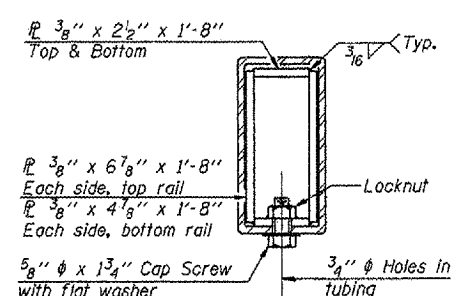
SECTION AT RAIL POST



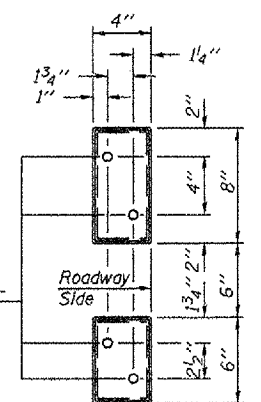
RAIL SPLICE CONNECTION AT EXPANSION JT.



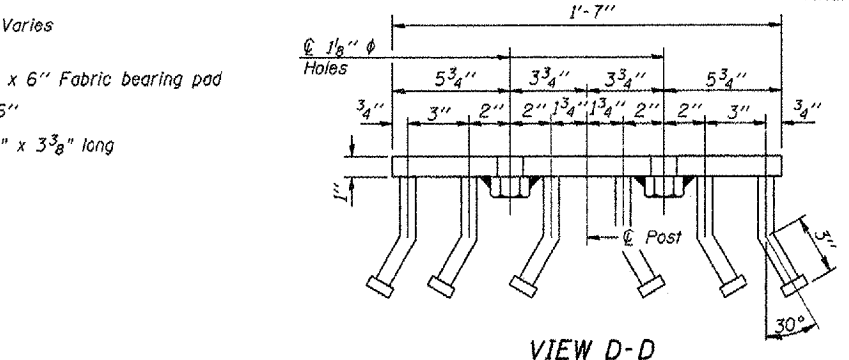
PLAN-BOTT. SPLICE P TYPICAL



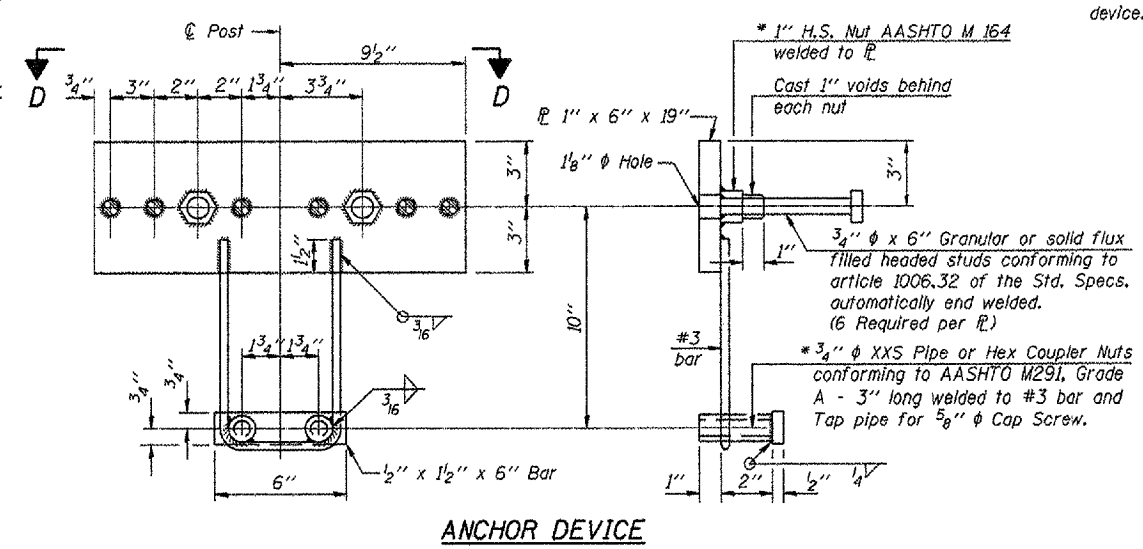
SECTION AT RAIL SPLICE



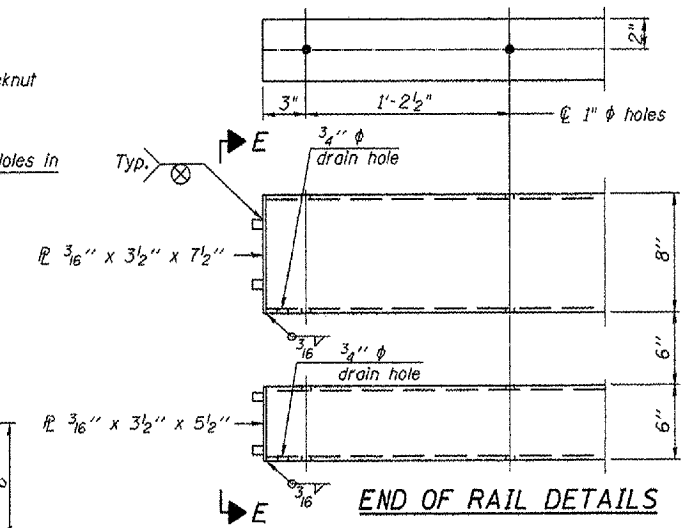
VIEW E-E



VIEW D-D



ANCHOR DEVICE



END OF RAIL DETAILS

Notes:
 All field drilled holes shall be coated with an approved zinc rich paint before erection.
 For multi-span bridges, sufficient 1/4" x 6" x 1'-2" galvanized steel shims shall be provided to align rail between adjacent spans. Cost included with Steel Bridge Rail, Type SM.
 Steel rail elements shall be galvanized according to Article 509.05 of the Standard Specifications.
 ** The studs of the anchor devices shall be placed below the top reinforcement bars and the outermost longitudinal reinforcement bar shall be placed directly above the studs of the rail post anchor device.

BILL OF MATERIAL

Item	Unit	Quantity
Steel Railing, Type SM	Foot	641

STEEL RAILING, TYPE SM
 WITH CONCRETE WEARING SURFACE
 F.A.P. ROUTE 317 - (U.S. 24)
 OVER OTTER CREEK
 SECTION (18B1)
 FULTON COUNTY
 STA. 257+54.33
 STRUCTURE NO. 029-0005

* Threaded areas shall be plugged or blocked off during casting of beam. Galvanized after fabrication.

PLT DATE = 8/27/06
 MODEL NAME = MODEL1008

R-34CWS 11-1-06 (6'-3" Maximum Post Spacing) (5" minimum to 7 1/8" maximum CWS thickness)