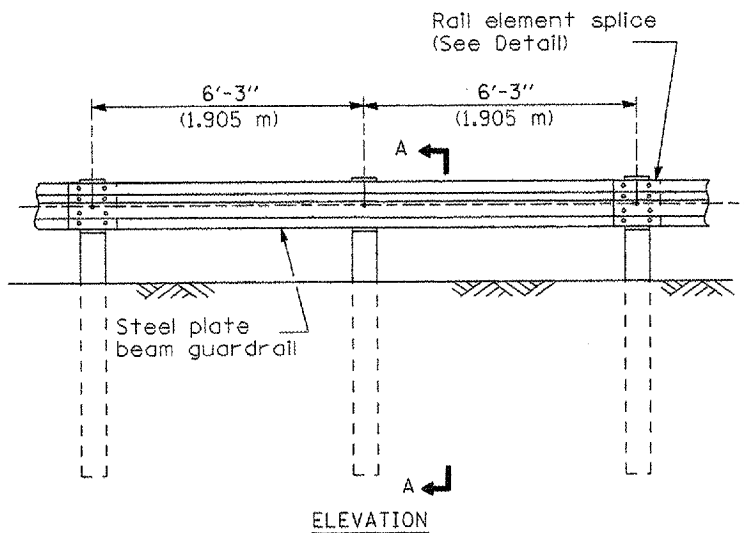
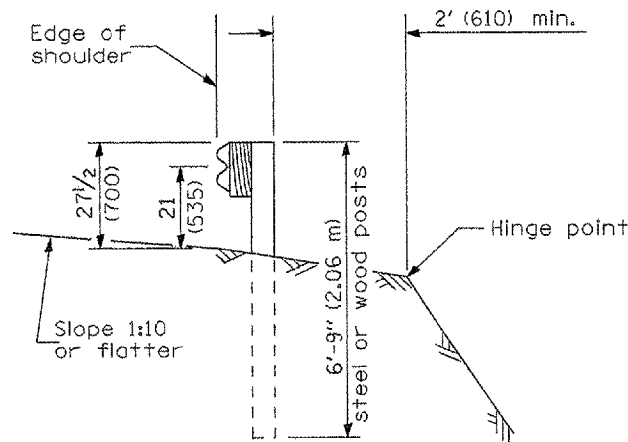


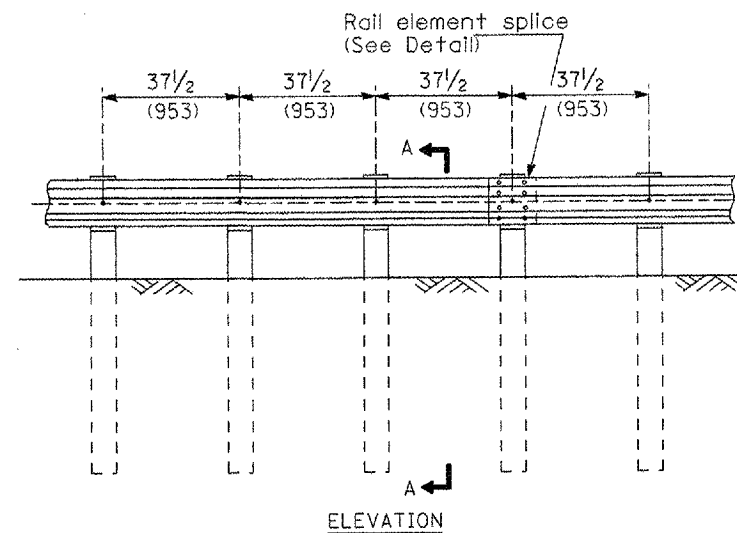
F.A.P. DIST.	SECTION	COUNTY	TOTAL SHEETS	SHEET NO.
317	(18B)	FULTON	50	32
STA. 252+75		TO STA. 262+40		
FED. ROAD DIST. NO.		ILLINOIS FED. AID PROJECT		



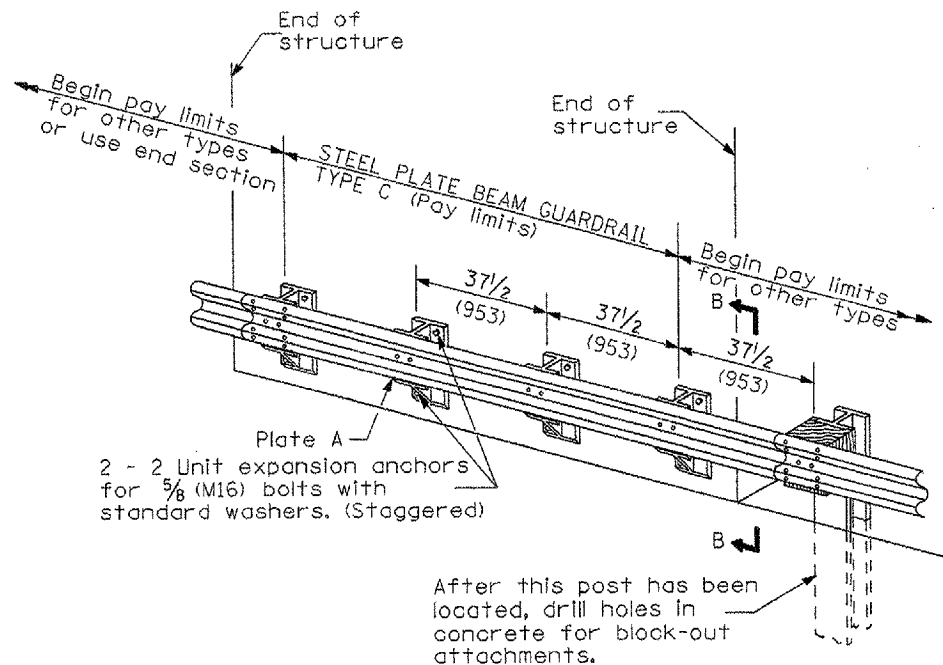
**TYPE A**  
6'-3" (1.905 m) Typical post spacing



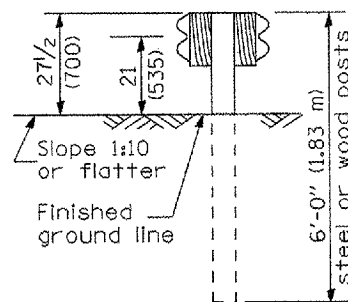
SECTION A-A



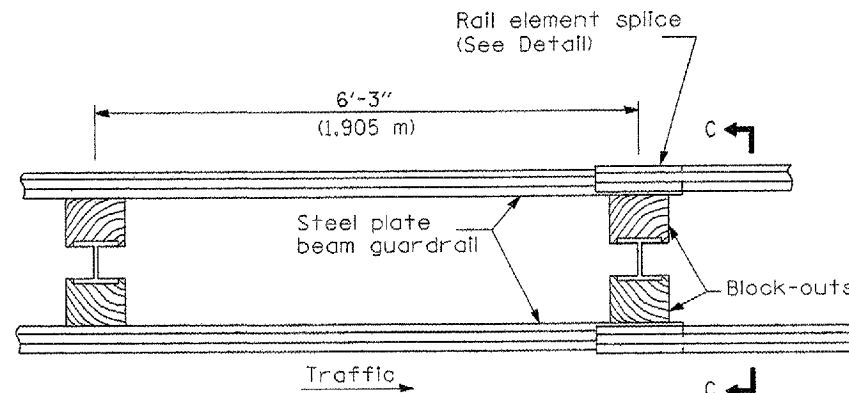
**TYPE B**  
37 1/2 (953) Closed post spacing



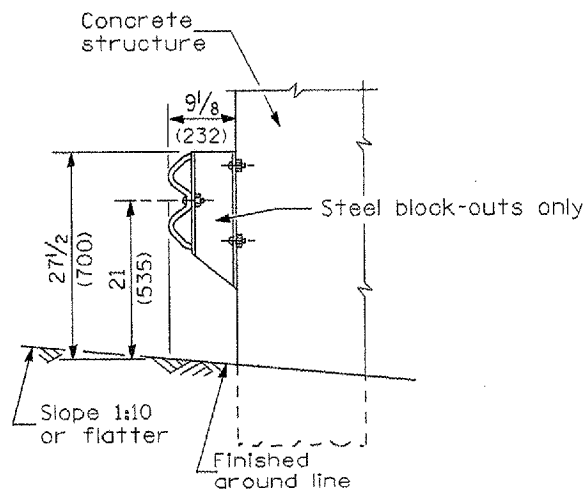
**TYPE C**  
37 1/2 (953) Block-out spacing



SECTION C-C



**TYPE D**  
Double steel plate beam guardrail  
6'-3" (1.905 m) typical post spacing



SECTION B-B

**GENERAL NOTES**

All slope ratios are expressed as units of vertical displacement to units of horizontal displacement (V:H).

All dimensions are in millimeters (inches) unless otherwise shown.

The existing steel posts may be drilled to match the bolt pattern shown herein for the wood block-out, or a new steel post shall be provided.

This detail is applicable to the guardrail system used prior to January 1, 2007. For details on the Midwest Guardrail System, see Standard 630001.

All dimensions are in inches (millimeters) unless otherwise noted.

DATE	REVISIONS	BY
3-1-07	NEW DETAIL	RJD

ILLINOIS DEPARTMENT OF TRANSPORTATION  
DISTRICT CADD STANDARD

REMOVE AND REERECT  
STEEL PLATE BEAM GUARDRAIL

CADD STD. 630011-D4(1)  
SCALE: NOT DRAWN TO SCALE  
DATE

SHEET 1 OF 4  
DRAWN BY: CADD  
CHECKED BY:

DESIGNER NOTE: Use this CADD Standard when removing and re-erecting existing guardrail that was originally installed prior to January 1, 2007. Note this is only for removing and re-erecting so the 27 1/2" height is maintained. If installing new guardrail use the State Standard.