

SEC 15, T4N, R2W, 4TH PM
(TYP PAGE XX-XX)

Bench Marks Chiseled "□" on Northeast Wingwall
of S.N. 055-0018
Elev. 609.74

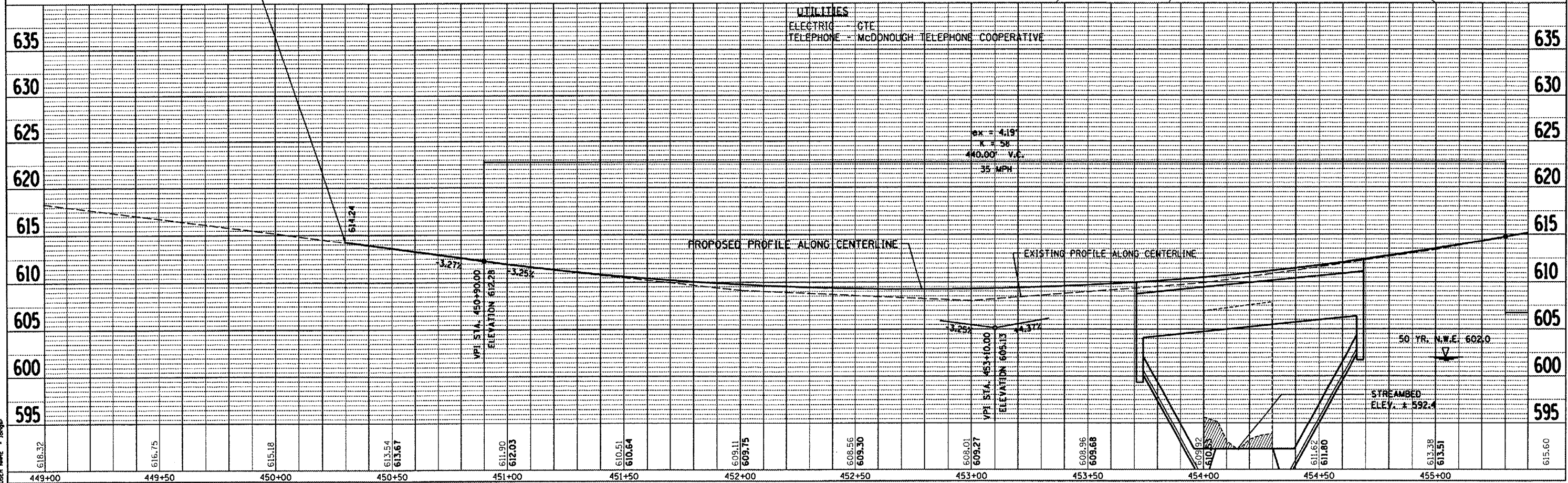
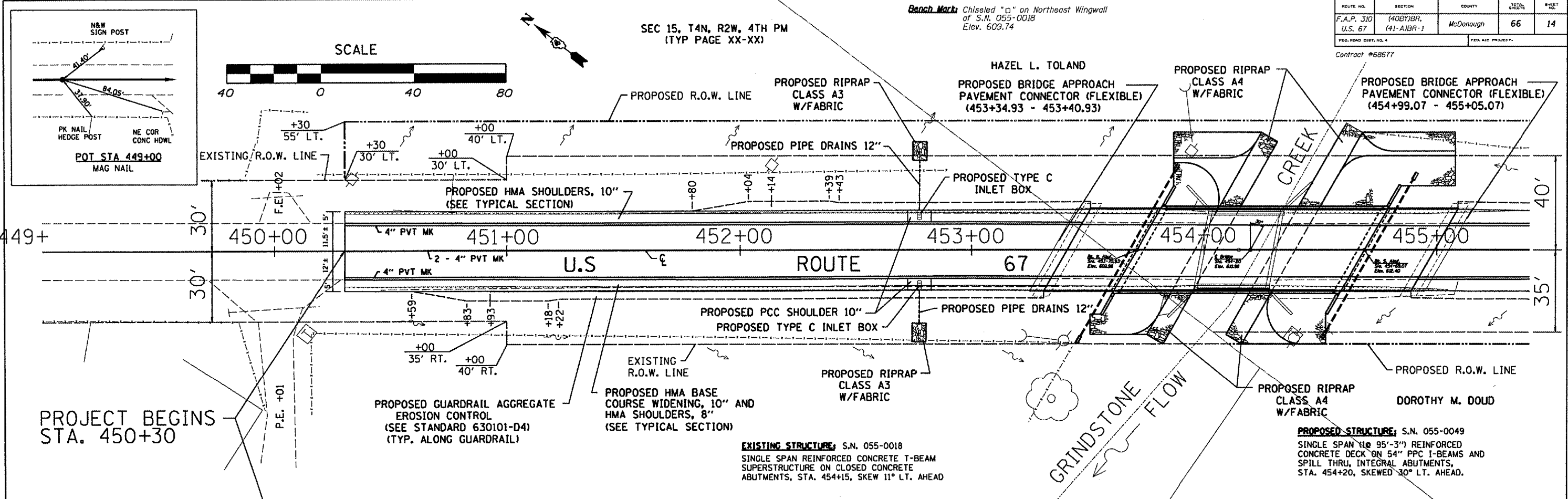
ROUTE NO.	SECTION	COUNTY	107% SHEETS	SHEET NO.
F.A.P. 310 U.S. 67	(40B)BR, (41-A)BR-1	McDonough	66	14

Contract #68677

DATE	BY
DATE	BY
DATE	BY

DATE	BY
DATE	BY
DATE	BY

PLOT DATE: 7/12/2007
PLOT SCALE: 1"=40'
USER NAME: jorjor



US RT 67 OVER GRINDSTONE CREEK