

PLAN	SURVEYED	BY	DATE
	PLOTTED		
	CHECKED		
	BY		
	NO. OF WAY CHECKED		
	CADD FILE NAME		
	NO.		

PROFILE	SURVEYED	BY	DATE
	PLOTTED		
	CHECKED		
	BY		
	NO. OF WAY CHECKED		
	STRUCTURE NOTATIONS CHKD		
	NO.		

SEC 9, TWP. 19 N, R 14W, 2 P.M.

SEC 8, TWP. 19 N, R 14W, 2 P.M.

F.A.I. RTE.	SECTION	COUNTY	TOTAL SHEETS	SHEET NO.
74	*	CHAMPAIGN	122	33

STA. 306+23.50 TO STA. 41+00

FED. ROAD DIST. NO. ILLINOIS FED. AID PROJECT

CONTRACT NO. 70001 \*10-92-8XHB-1,HB-4)BR

PR PIPE CULVERT WITH METAL END SECTIONS CLASS D, TYPE 1, ELLIPTICAL EQUIVALENT 15"

STA. 306+40.40, 26.6' LT; US  $R_f = 667.09$

STA. 306+70.40, 26.6' LT; DS  $R_f = 667.06$

PR. 3' BIT. + 5' AGG. SHOULDER (TYP.)

PR. CONST. LIMIT

4" SKIP-DASH YELLOW PAVEMENT MARKING

PR. 8' HMA SHLD. (TYP.)

PROPOSED SEEDING CLASS 2 (TYP.)

4" SOLID WHITE PAVEMENT MARKING

PR. 3' HMA + 5' AGG. SHOULDER (TYP.)

PR. 3' HMA SHLD. AGG. SHLD.

PR. 5' AGG. SHLD.

PR. 3' HMA SHLD. AGG. SHLD.

PR. 3' HMA + 5' AGG. SHOULDER (TYP.)

PR. 3' HMA SHLD. AGG. SHLD.

PR. 3' HMA + 5' AGG. SHOULDER (TYP.)

PR. 3' HMA SHLD. AGG. SHLD.

PR. 3' HMA + 5' AGG. SHOULDER (TYP.)

PR. 3' HMA SHLD. AGG. SHLD.

PR. 3' HMA + 5' AGG. SHOULDER (TYP.)

PR. 3' HMA SHLD. AGG. SHLD.

PR. 3' HMA + 5' AGG. SHOULDER (TYP.)

PR. 3' HMA SHLD. AGG. SHLD.

PR. 3' HMA + 5' AGG. SHOULDER (TYP.)

PR. 3' HMA SHLD. AGG. SHLD.

PR. 3' HMA + 5' AGG. SHOULDER (TYP.)

PR. 3' HMA SHLD. AGG. SHLD.

PR. 3' HMA + 5' AGG. SHOULDER (TYP.)

PR. 3' HMA SHLD. AGG. SHLD.

PR. 3' HMA + 5' AGG. SHOULDER (TYP.)

PR. 3' HMA SHLD. AGG. SHLD.

PR. 3' HMA + 5' AGG. SHOULDER (TYP.)

PR. 3' HMA SHLD. AGG. SHLD.

PR. 3' HMA + 5' AGG. SHOULDER (TYP.)

PR. 3' HMA SHLD. AGG. SHLD.

PR. 3' HMA + 5' AGG. SHOULDER (TYP.)

PR. 3' HMA SHLD. AGG. SHLD.

PR. 3' HMA + 5' AGG. SHOULDER (TYP.)

PR. 3' HMA SHLD. AGG. SHLD.

PR. 3' HMA + 5' AGG. SHOULDER (TYP.)

PR. 3' HMA SHLD. AGG. SHLD.

PR. 3' HMA + 5' AGG. SHOULDER (TYP.)

PR. 3' HMA SHLD. AGG. SHLD.

PR. 3' HMA + 5' AGG. SHOULDER (TYP.)

PR. 3' HMA SHLD. AGG. SHLD.

PR. 3' HMA + 5' AGG. SHOULDER (TYP.)

PR. 3' HMA SHLD. AGG. SHLD.

PR. 3' HMA + 5' AGG. SHOULDER (TYP.)

PR. 3' HMA SHLD. AGG. SHLD.

PR. 3' HMA + 5' AGG. SHOULDER (TYP.)

PR. 3' HMA SHLD. AGG. SHLD.

PR. 3' HMA + 5' AGG. SHOULDER (TYP.)

PR. 3' HMA SHLD. AGG. SHLD.

PR. 3' HMA + 5' AGG. SHOULDER (TYP.)

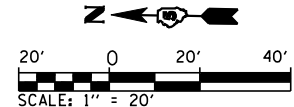
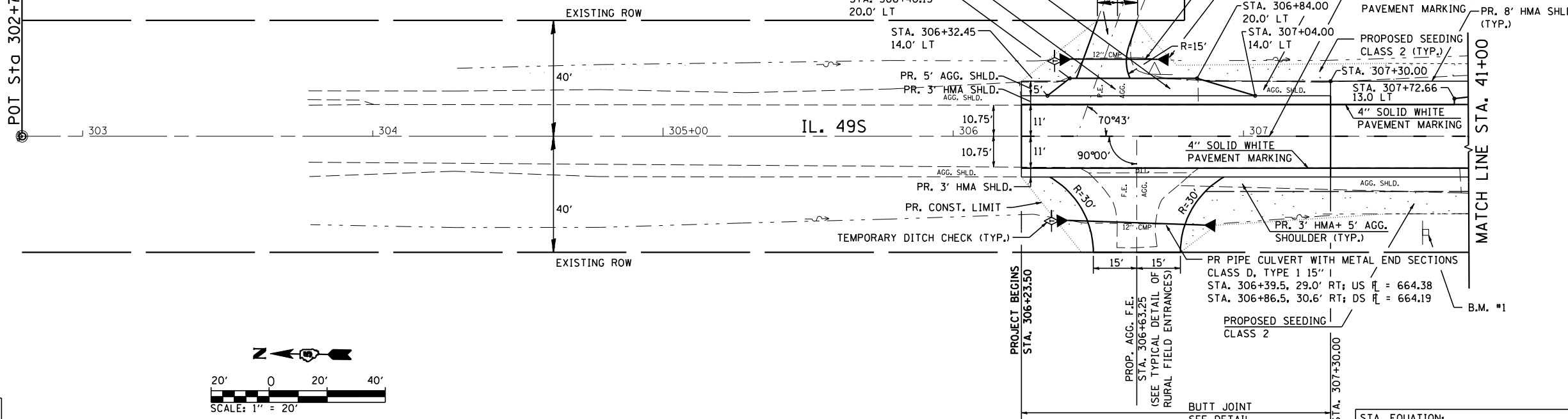
PR. 3' HMA SHLD. AGG. SHLD.

PR. 3' HMA + 5' AGG. SHOULDER (TYP.)

PR. 3' HMA SHLD. AGG. SHLD.

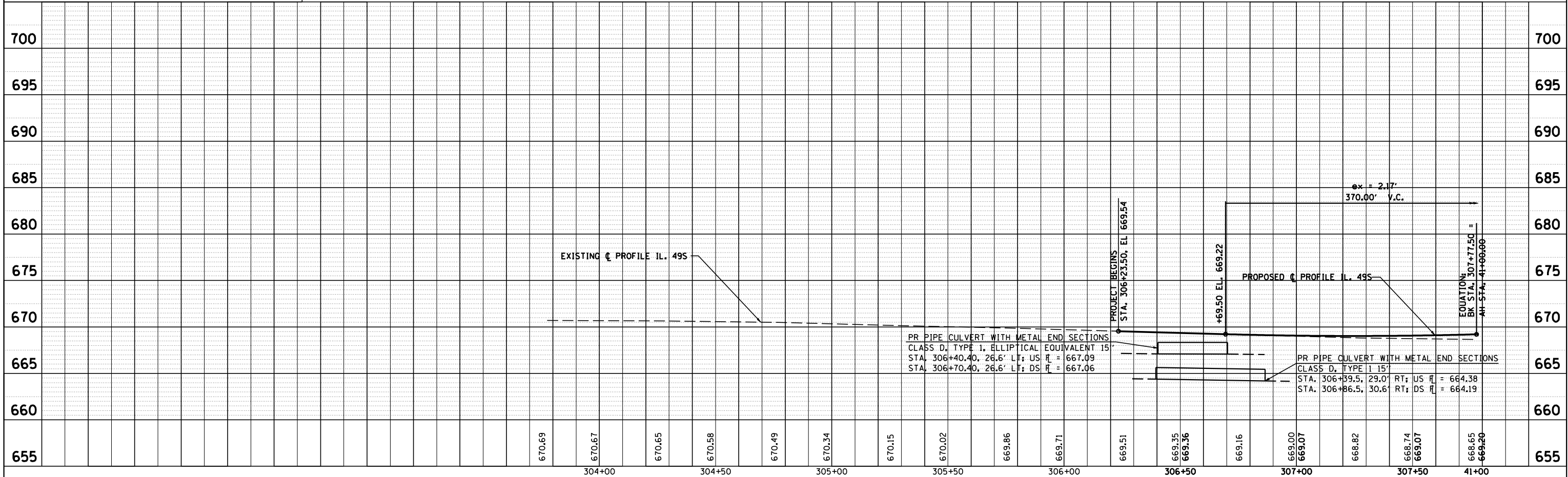
POT Sta 302+79.09

MATCH LINE STA. 41+00



B.M. #1 CHISELED "□" ON E. FOUNDATION OF SIGN FOR WB 1-74 ON W. SIDE OF IL 49 S & N. OF NW RAMP STA. 307+62.594, 33.25' RT, ELEV 667.975

STA. EQUATION:  
Sta 307+77.50 BK = Sta 41+00.00 AH



IL 49S STA. 306+23.50 TO STA. 41+00