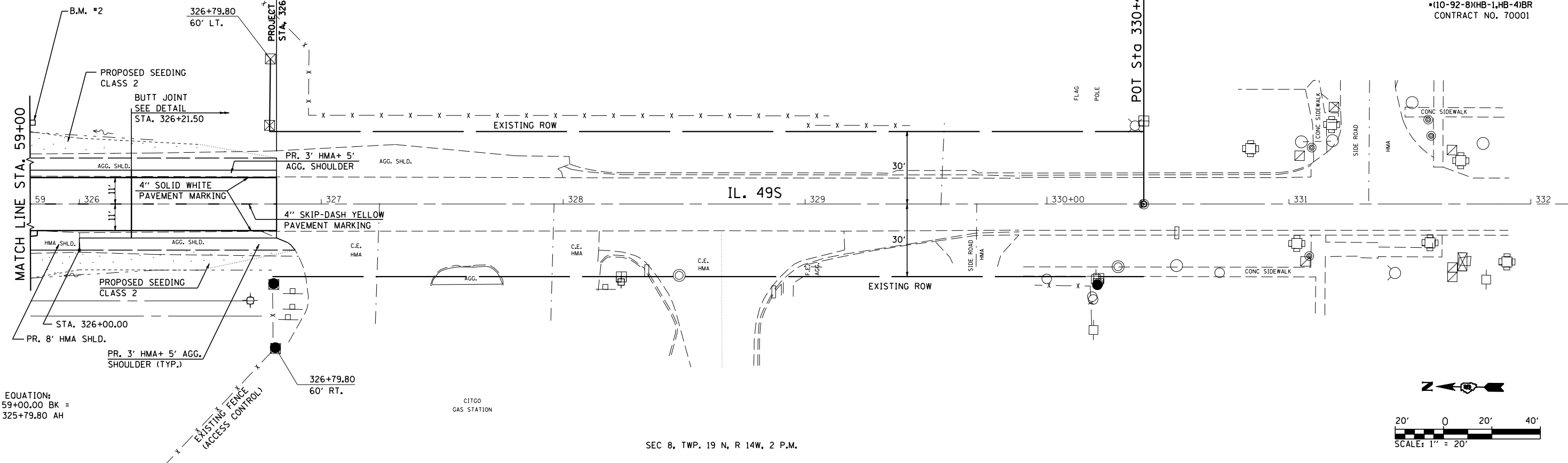


B.M. #2 CHISELED "□" ON E. FOUNDATION OF SIGN FOR EB I-74 ON E. SIDE OF IL 49 S & S. OF SE RAMP STA. 325+80.458, 33.70' LT, ELEV 666.960

SEC 9, TWP. 19 N, R 14W, 2 P.M.

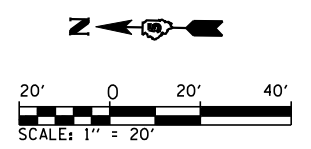
F.A.I. RTE.	SECTION	COUNTY	TOTAL SHEETS	SHEET NO.
74		CHAMPAIGN	122	37
STA. 59+00		TO STA. 326+81.50		
FED. ROAD DIST. NO. ILLINOIS FED. AID PROJECT				
•(10-92-8)XHB-1,HB-4)BR				
CONTRACT NO. 70001				

PLAN	SURVEYED	BY	DATE
	PLOTTED		
	CHECKED		
	NO. OF WAY CHECKED		
	CADD FILE NAME		

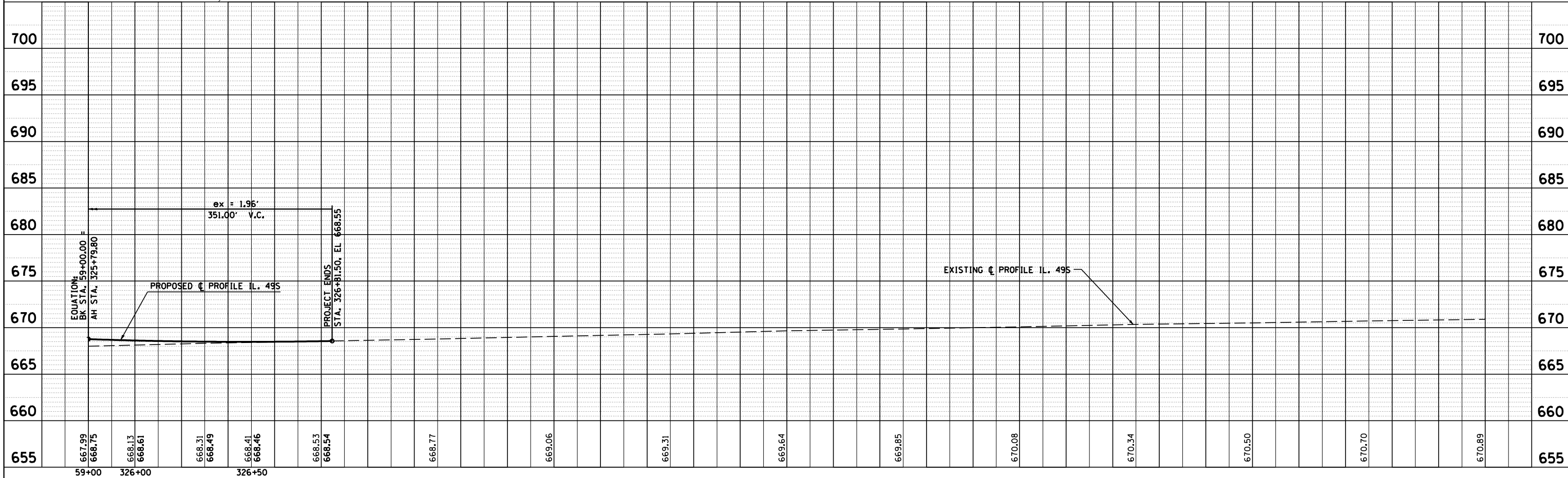


STA. EQUATION:
Sta 59+00.00 BK =
Sta 325+79.80 AH

SEC 8, TWP. 19 N, R 14W, 2 P.M.



PROFILE	SURVEYED	BY	DATE
	PLOTTED		
	CHECKED		
	NO. OF WAY CHECKED		
	STRUCTURE NOTATIONS CHKD		



IL 49S STA. 59+00 TO STA. 326+81.50