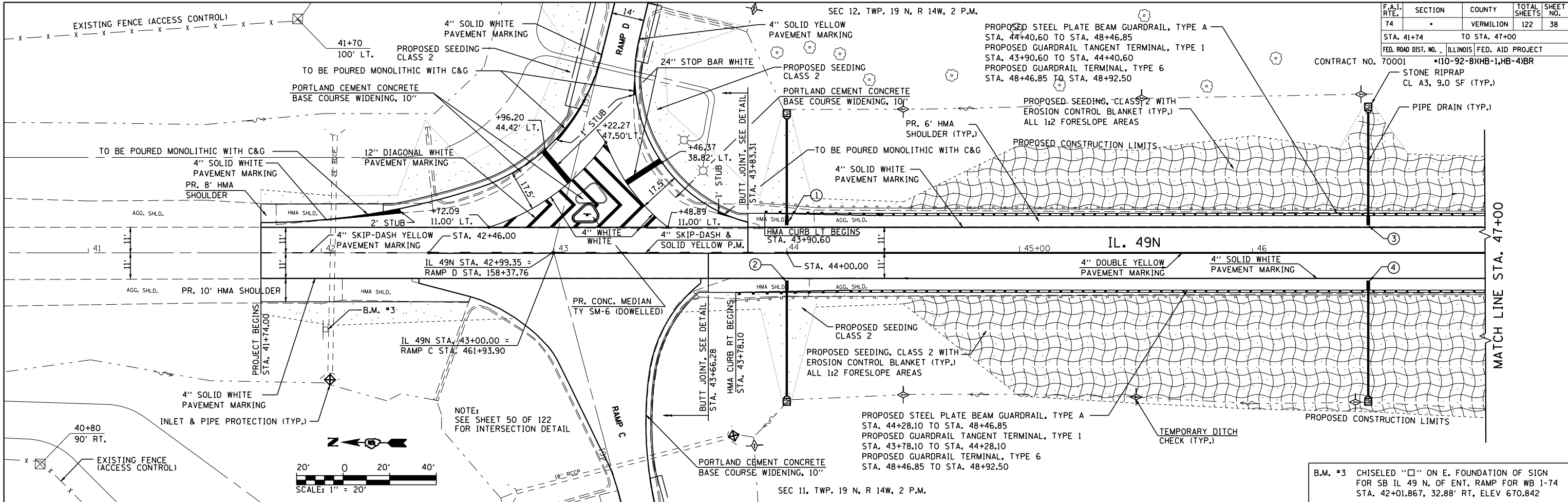


F.A.I. RTE.	SECTION	COUNTY	TOTAL SHEETS	SHEET NO.
74		VERMILION	122	38

STA. 41+74 TO STA. 47+00
 FED. ROAD DIST. NO. ILLINOIS FED. AID PROJECT
 CONTRACT NO. 70001 *10-92-8XHB-1,HB-4IBR

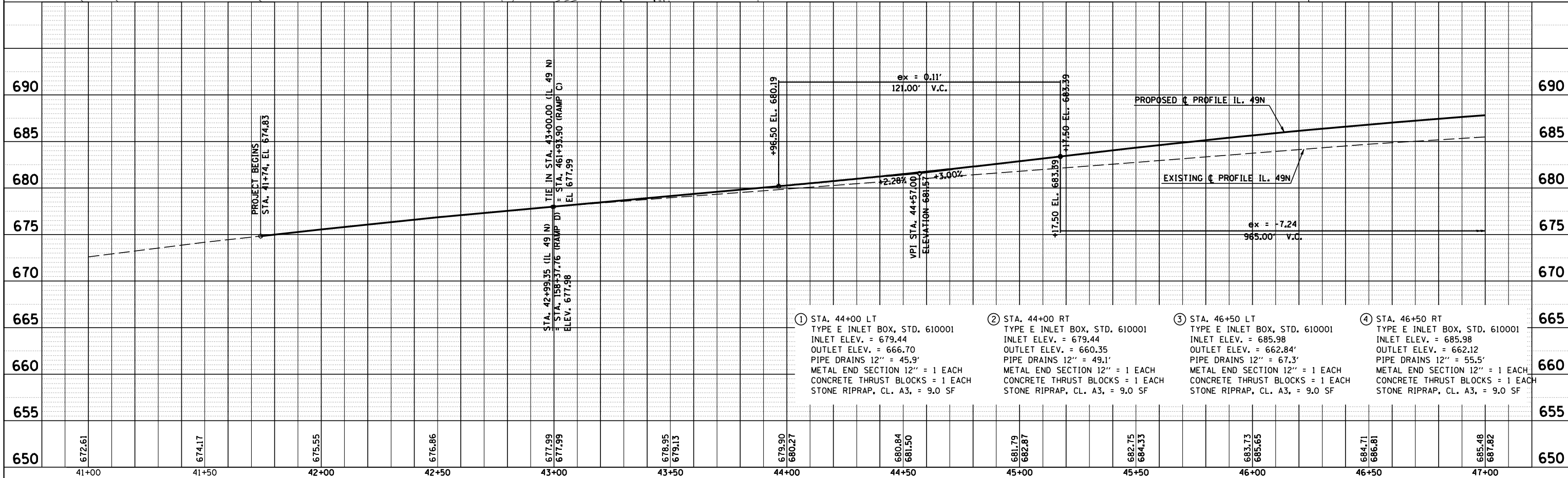
STONE RIPRAP CL. A3, 9.0 SF (TYP.)
 PIPE DRAIN (TYP.)



B.M. #3 CHISELED "□" ON E. FOUNDATION OF SIGN FOR SB IL 49 N. OF ENT. RAMP FOR WB I-74 STA. 42+01.867, 32.88' RT, ELEV 670.842

PLAN	DATE
SURVEYED	
PLOTTED	
CHECKED	
BY	
NO.	

PROFILE	DATE
SURVEYED	
PLOTTED	
CHECKED	
BY	
NO.	



IL 49N STA. 41+74 TO STA. 47+00