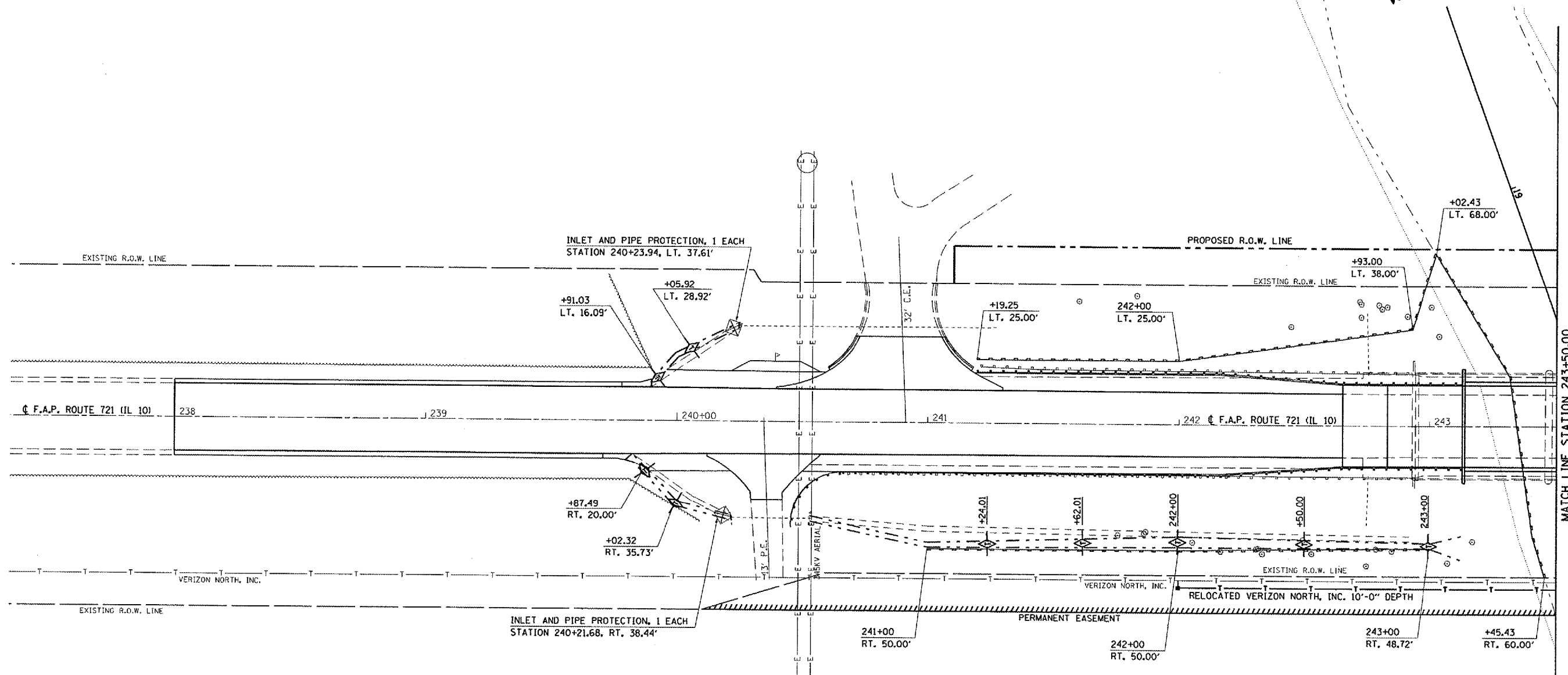


F.A.P. RTE.	SECTION	COUNTY	TOTAL SHEETS	SHEET NO.
721	(113BR)BR	DEWITT	81	24
STA.		TO STA.		
FED. ROAD DIST. NO.		ILLINOIS FED. AID PROJECT		

# EROSION CONTROL PLAN

SHEET 1 OF 2



**TEMPORARY DITCH CHECKS**

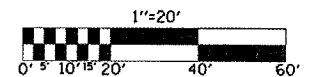
STATION	OFFSET	EACH
239+87.49	RT 20.00	1
239+91.03	LT 16.09	1
240+00.00	RT 32.82	1
240+05.92	LT 28.92	1
241+24.01	RT 47.87	1
241+62.01	RT 47.24	1
242+00.00	RT 46.68	1
242+50.00	RT 47.13	1
243+00.00	RT 47.72	1
<b>TOTAL</b>		<b>9</b>

**PERIMETER EROSION BARRIER**

STATION	OFFSET	STATION	OFFSET	FOOT		
241+00.00	50.00	RT	242+00.00	50.00	RT	100.00
241+19.25	25.00	LT	242+00.00	25.00	LT	81.00
242+00.00	50.00	RT	243+00.00	48.72	RT	101.00
242+00.00	25.00	LT	242+93.00	38.00	LT	94.00
242+93.00	38.00	LT	243+02.43	67.64	LT	32.00
243+02.43	67.64	LT	243+45.43	60.00	RT	137.00
<b>TOTAL</b>					<b>545.00</b>	

**INLET AND PIPE PROTECTION**

STATION	OFFSET	EACH
240+21.6	RT 38.44	1
240+23.9	LT 37.61	1
<b>TOTAL</b>		<b>2</b>



PLOT DATE = 10/12/2007  
 FILE NAME = c:\projects\70232\er-03\er-03.dgn  
 PLOT SCALE = 42.3529 / IN.  
 USER NAME = collierb

**REVIS** **-REVISED SHEET 10/15/07**

ILLINOIS DEPARTMENT OF TRANSPORTATION  
**EROSION CONTROL PLAN**  
 F.A.P. ROUTE 721 (IL 10)  
 SECTION (113BR)BR  
 DEWITT COUNTY  
 Sheet 1 of 2

SCALE: 1" = 20'  
 DATE: 07/03/07  
 DRAWN BY: B.B.P.  
 CHECKED BY: R.M.N.