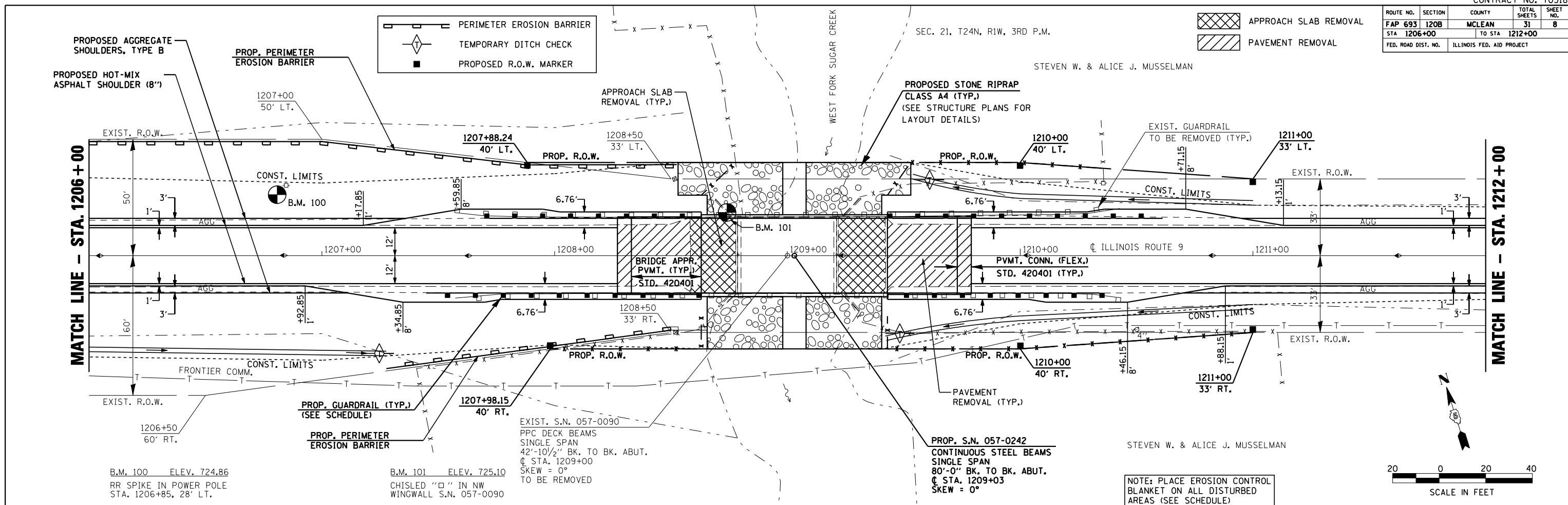


ROUTE NO.	SECTION	COUNTY	TOTAL SHEETS	SHEET NO.
FAP 693	120B	MCLEAN	31	8
STA 1206+00			TO STA 1212+00	
FED. ROAD DIST. NO.		ILLINOIS FED. AID PROJECT		



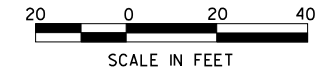
B.M. 100 ELEV. 724.86
RR SPIKE IN POWER POLE
STA. 1206+85, 28' LT.

B.M. 101 ELEV. 725.10
CHISLED "O" IN NW
WINGWALL S.N. 057-0090

EXIST. S.N. 057-0090
PPC DECK BEAMS
SINGLE SPAN
42'-10 1/2" BK. TO BK. ABUT.
C STA. 1209+00
SKEW = 0°
TO BE REMOVED

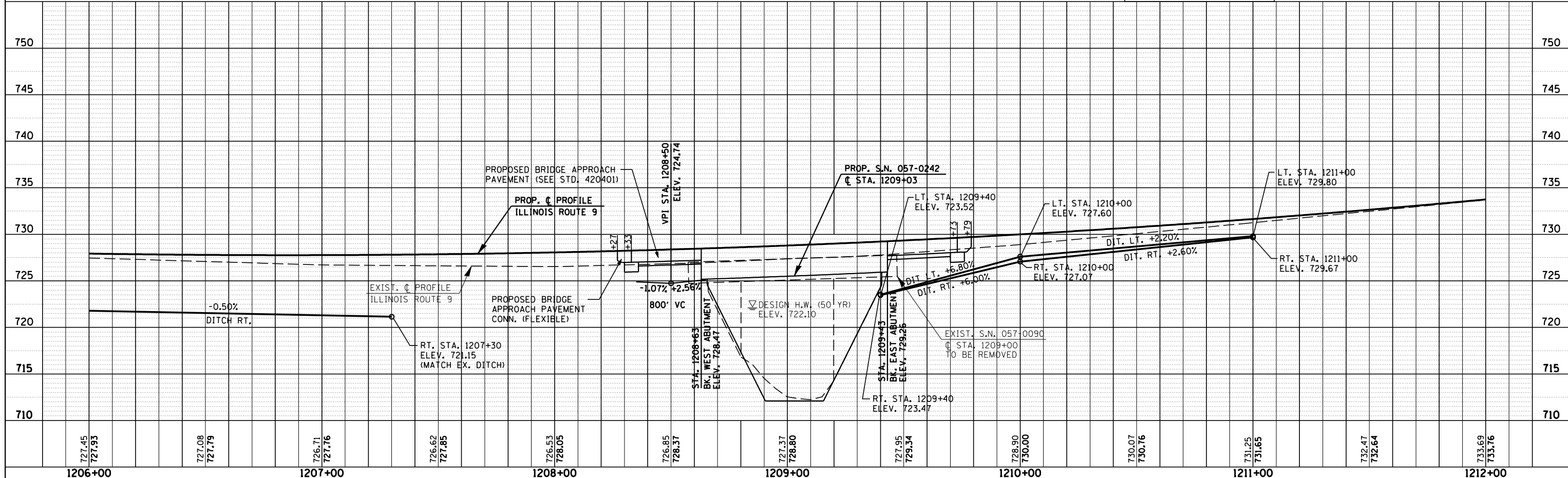
PROP. S.N. 057-0242
CONTINUOUS STEEL BEAMS
SINGLE SPAN
80'-0" BK. TO BK. ABUT.
C STA. 1209+03
SKEW = 0°

NOTE: PLACE EROSION CONTROL
BLANKET ON ALL DISTURBED
AREAS (SEE SCHEDULE)



PLAN	SURVEYED	BY	DATE
	PLOTTED		
	CHECKED		
	NO. OF WAY CHECKED		
	CADD FILE NAME		

PROFILE	SURVEYED	BY	DATE
	PLOTTED		
	CHECKED		
	B.M. NOTED		
	STRUCTURE NOTATIONS CHKD		



ILLINOIS ROUTE 9 - STA. 1206+00 TO STA. 1212+00