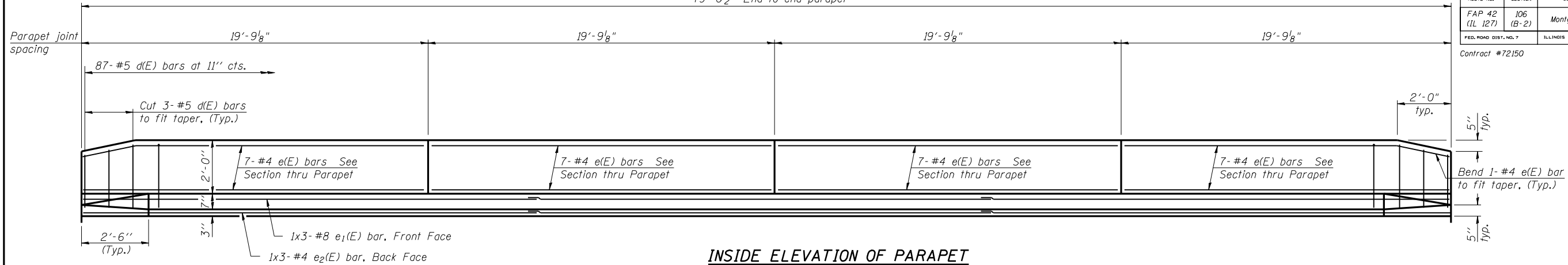


79'-0 1/2" End to end parapet

ROUTE NO. FAP 42 (IL 127)	SECTION 106 (B-2)	COUNTY Montgomery	SHEET NO. 61	SHEET NO. 25	SHEET NO. 7 15 SHEETS
FED. ROAD DIST. NO. 7		ILLINOIS	FED. AID PROJECT		

Contract #72150

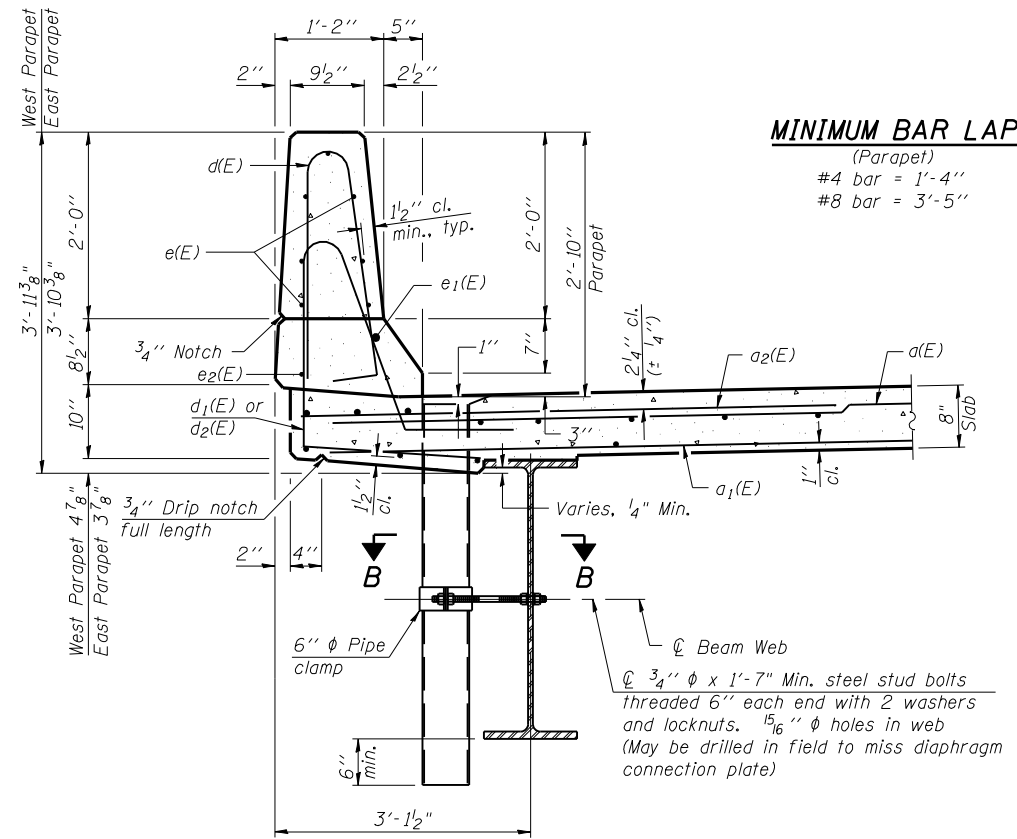


INSIDE ELEVATION OF PARAPET

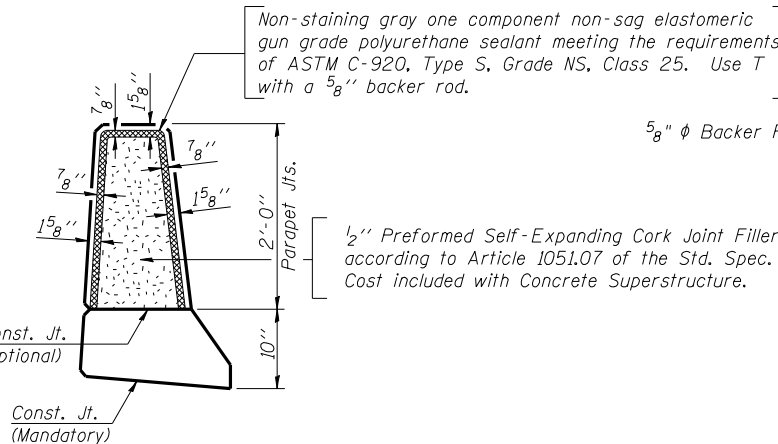
**SUPERSTRUCTURE
BILL OF MATERIAL**

Bar	No.	Size	Length	Shape
a(E)	238	#5	19'-0"	—
a1(E)	190	#5	18'-8"	—
a2(E)	118	#6	6'-0"	—
a3(E)	8	#5	19'-4"	—
b(E)	168	#5	20'-11"	—
b1(E)	96	#5	27'-4"	—
d(E)	174	#5	5'-7"	⌋
d1(E)	87	#5	7'-10"	⌋
d2(E)	87	#5	7'-10"	⌋
e(E)	56	#4	19'-5"	—
e1(E)	6	#8	28'-6"	—
e2(E)	6	#4	27'-3"	—
m(E)	8	#6	18'-6"	—
m1(E)	24	#6	8'-9"	—
m2(E)	12	#6	19'-9"	—
m3(E)	8	#6	5'-8"	—
m4(E)	8	#6	2'-4"	—
s(E)	80	#5	5'-8"	⌋
s1(E)	72	#4	9'-6"	⌋
v(E)	76	#5	3'-4"	⌋
Reinforcement Bars, Epoxy Coated			Pound	21960
Concrete Superstructure			Cu. Yds.	111.4
Floor Drains			Each	4

Bars indicated thus 1x3-#5 etc. indicates 1 line of bars with 3 lengths per line.



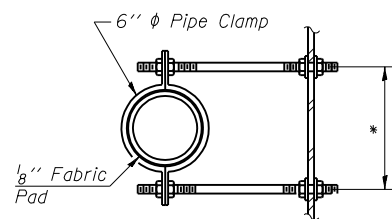
SECTION THRU PARAPET
(East Parapet Shown)



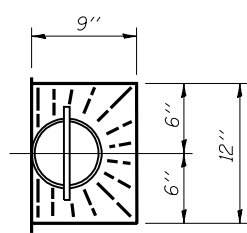
PARAPET JOINT DETAILS

Notes:
Floor drains need not be painted.
Fiberglass pipe shall conform to ASTM D 2996, with short-time rupture strength hoop tensile stress of 30,000 p.s.i. minimum.

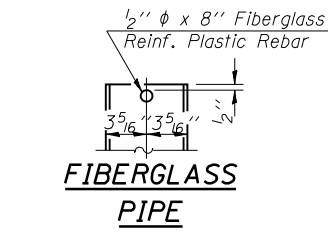
Aug-16-2007 11:20:08AM:20:08 AM \$FILEABBREV\$



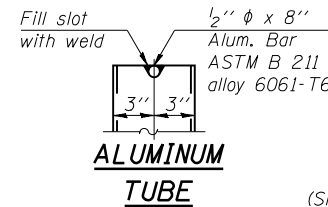
SECTION B-B
* Dimension as required by Pipe Clamp



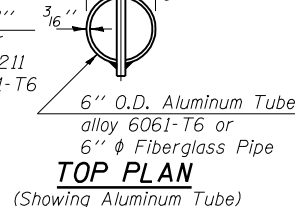
TOP PLAN



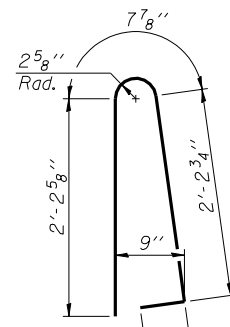
FIBERGLASS PIPE



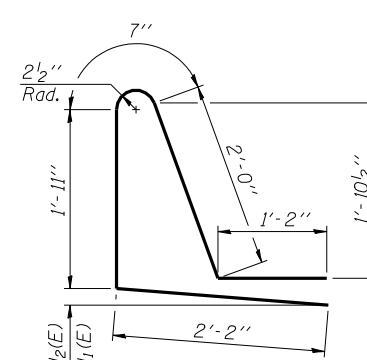
ALUMINUM TUBE



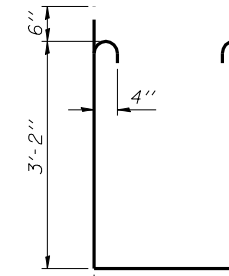
TOP PLAN
(Showing Aluminum Tube)



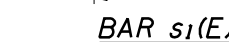
BAR d(E)



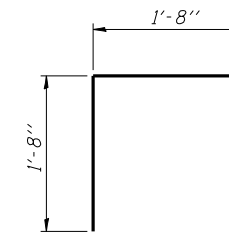
BARS d1(E) & d2(E)



BAR s(E)



BAR s1(E)



BAR v(E)

REVISIONS

NAME	DATE

Lin Engineering, Ltd.
Consulting Engineers
Chatham, Illinois

Designed By: RKM
Checked By: MTH
Date: 04/07

Drawn By: AJP
File: 068-0507.DGN

ILLINOIS DEPARTMENT OF TRANSPORTATION
SUPERSTRUCTURE DETAILS
ILLINOIS ROUTE 127 OVER
LITTLE BEARCAT CREEK
F.A.P. ROUTE 42 - SECTION 106 (B-2)
MONTGOMERY COUNTY
STATION 115+99.00
STRUCTURE NO. 068-0507