

Notes: Four steps monolithically with cap.  
Space reinforcement in cap to miss anchor bolts.

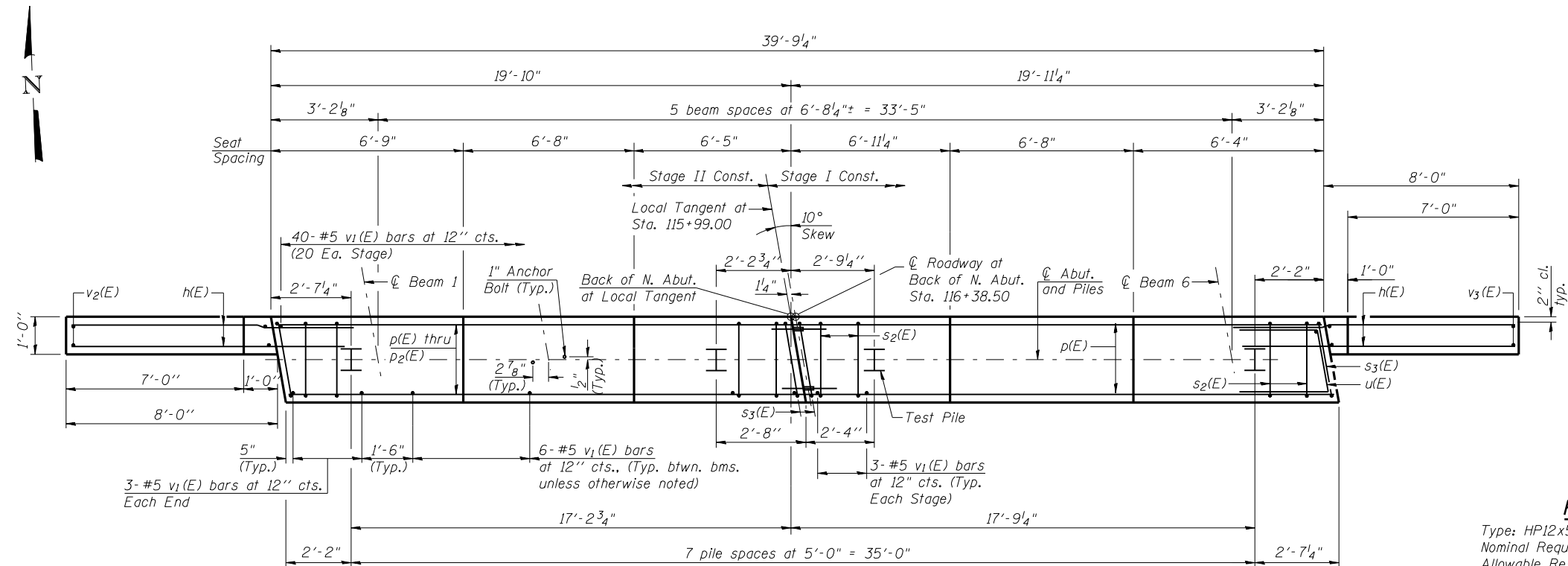
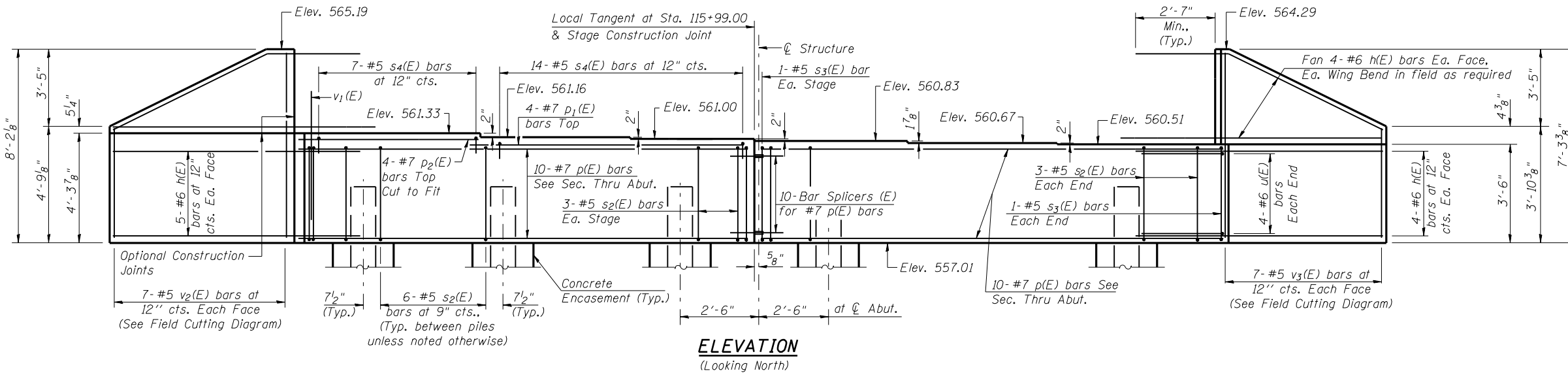
ROUTE NO.	SECTION	COUNTY	TOTAL SHEETS	SHEET NO.	SHEET NO. 10 15 SHEETS
FAP 42 (L 127)	106 (B-2)	Montgomery	61	28	
FED. ROAD DIST. NO. 7		ILLINOIS	FED. AID PROJECT		

Contract #72150

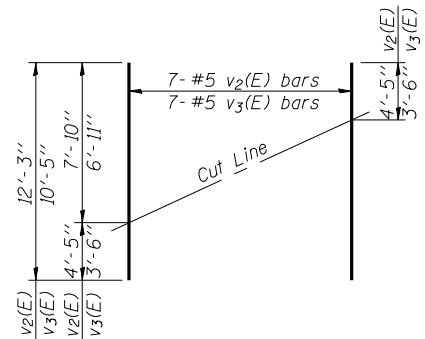
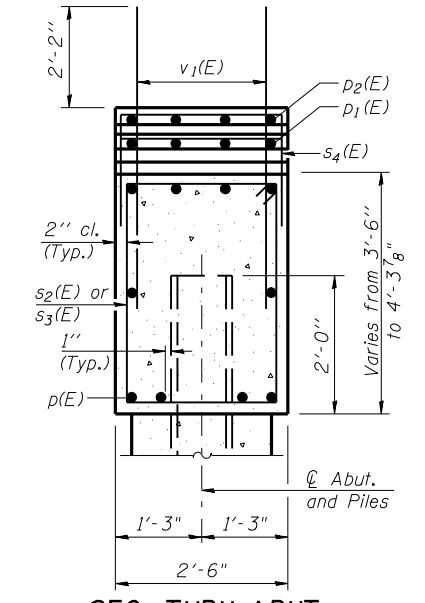
**BILL OF MATERIAL**  
(North Abutment)

Bar	No.	Size	Length	Shape
h(E)	34	#6	10'-7"	—
p(E)	20	#7	19'-6"	—
p <sub>1</sub> (E)	4	#7	15'-6"	—
p <sub>2</sub> (E)	4	#7	6'-5"	—
s <sub>2</sub> (E)	48	#5	11'-7"	□
s <sub>3</sub> (E)	4	#5	11'-9"	□
s <sub>4</sub> (E)	21	#5	6'-6"	□
u(E)	8	#6	7'-3"	□
v <sub>1</sub> (E)	76	#5	4'-4"	—
v <sub>2</sub> (E)	7	#5	12'-3"	—
v <sub>3</sub> (E)	7	#5	10'-5"	—
Structure Excavation			Cu. Yd.	116
Concrete Structures			Cu. Yd.	18.1
Reinforcement Bars, Epoxy Coated			Pound	2890
Furnishing Steel Piles, HP12x53			Foot	392
Driving Piles			Foot	392
Test Pile, Steel HP12x53			Each	1
Concrete Encasement			Cu. Yd.	2.8
Anchor Bolts 1" φ			Each	12

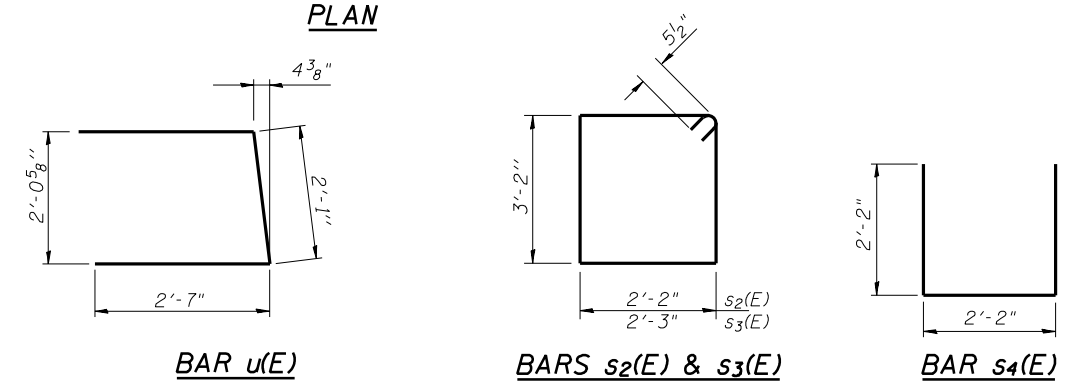
For details of Bar Splicers, see sheet 13 of 15.  
For details of piles and Concrete Encasement, see sheet 14 of 15.  
For details of Integral Abutment Bearing, see sheet 9 of 15.  
For drainage details, see Section Thru Integral Abutment on sheet 2 of 15.



**PILE DATA**  
Type: HP12x53  
Nominal Required Bearing: 345 kips  
Allowable Resistance Available: 115kips  
Est. Length: 56 ft  
No. Production Piles: 7  
No. Test Piles: 1



**FIELD CUTTING DIAGRAM**  
Order v<sub>2</sub>(E) and v<sub>3</sub>(E) Full length. Cut as shown and use remainder of bars in opposite face.



Aug-16-2007 11:20:24AM:20:24 AM \$FILEABBREV\$

**REVISIONS**

NAME	DATE

**Lin Engineering, Ltd.**  
Consulting Engineers  
Chatham, Illinois

Designed By: RKM    Checked By: MTH    Drawn By: AJP  
Date: 04/07    File: 068-0507.DGN

ILLINOIS DEPARTMENT OF TRANSPORTATION  
**NORTH ABUTMENT**  
ILLINOIS ROUTE 127 OVER  
LITTLE BEARCAT CREEK  
F.A.P. ROUTE 42 - SECTION 106 (B-2)  
MONTGOMERY COUNTY  
STATION 115+99.00  
STRUCTURE NO. 068-0507