

Notes: Four steps monolithically with cap.  
Space reinforcement in cap to miss anchor bolts.

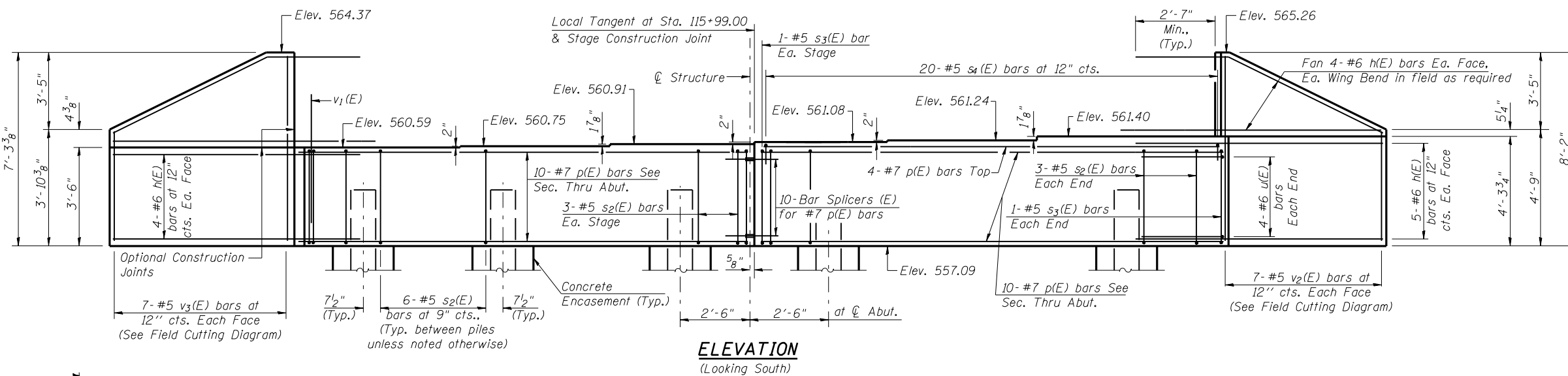
ROUTE NO.	SECTION	COUNTY	TOTAL SHEETS	SHEET NO.	SHEET NO.
FAP 42 (IL 127)	106 (B-2)	Montgomery	61	29	11
FED. ROAD DIST. NO. 7	ILLINOIS	FED. AID PROJECT			15 SHEETS

Contract #72150

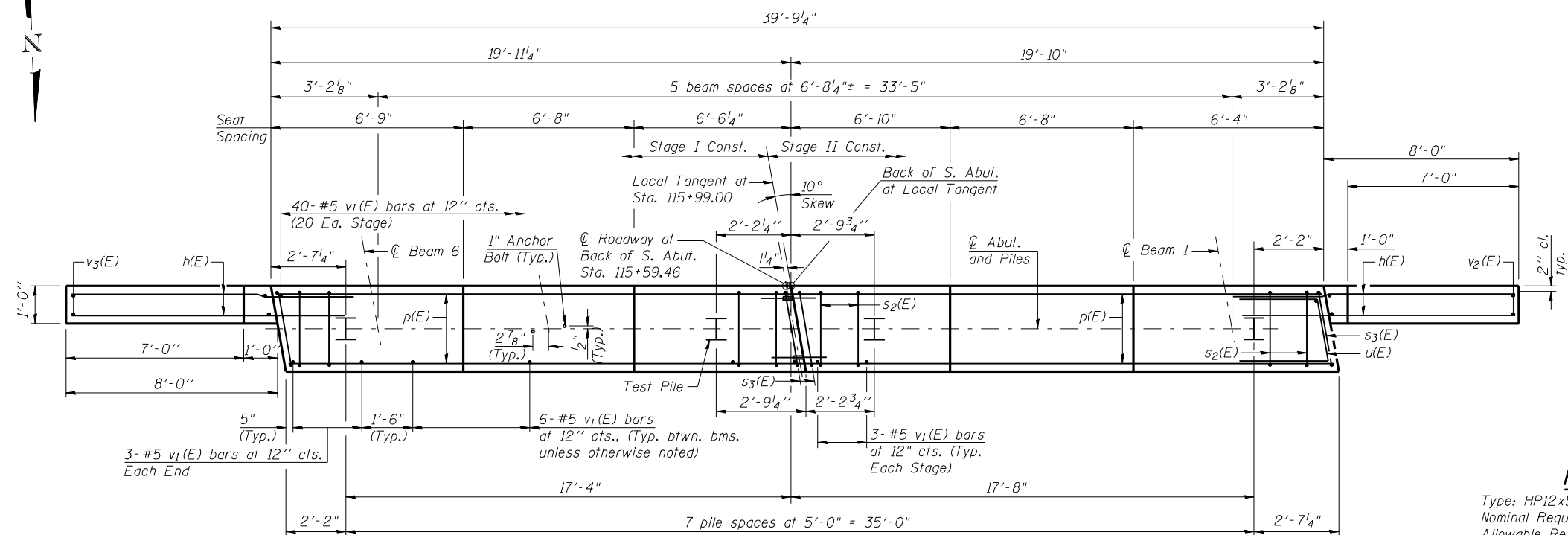
**BILL OF MATERIAL**  
(South Abutment)

Bar	No.	Size	Length	Shape
h(E)	34	#6	10'-7"	—
p(E)	24	#7	19'-6"	—
s <sub>2</sub> (E)	48	#5	11'-7"	□
s <sub>3</sub> (E)	4	#5	11'-9"	□
s <sub>4</sub> (E)	20	#5	6'-6"	□
u(E)	8	#6	7'-3"	—
v <sub>1</sub> (E)	76	#5	4'-4"	—
v <sub>2</sub> (E)	7	#5	12'-3"	—
v <sub>3</sub> (E)	7	#5	10'-5"	—
Structure Excavation		Cu. Yd.	115	
Concrete Structures		Cu. Yd.	18.1	
Reinforcement Bars, Epoxy Coated		Pound	2860	
Furnishing Steel Piles, HP12x53		Foot	364	
Driving Piles		Foot	364	
Test Pile, Steel HP12x53		Each	1	
Concrete Encasement		Cu. Yd.	2.8	
Anchor Bolts 1" φ		Each	12	

For details of Bar Splicers, see sheet 13 of 15.  
For details of piles and Concrete Encasement, see sheet 14 of 15.  
For details of Integral Abutment Bearing, see sheet 9 of 15.  
For drainage details, see Section Thru Integral Abutment on sheet 2 of 15.



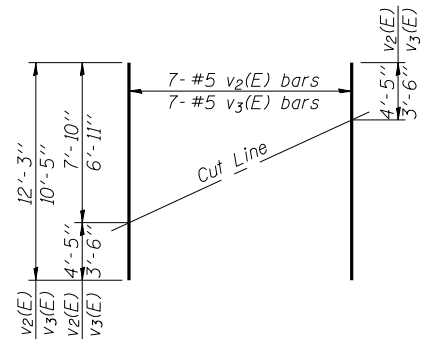
**ELEVATION**  
(Looking South)



**PLAN**

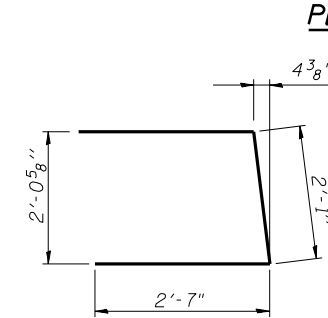
**PILE DATA**

Type: HP12x53  
Nominal Required Bearing: 345 kips  
Allowable Resistance Available: 115kips  
Est. Length: 52 ft  
No. Production Piles: 7  
No. Test Piles: 1

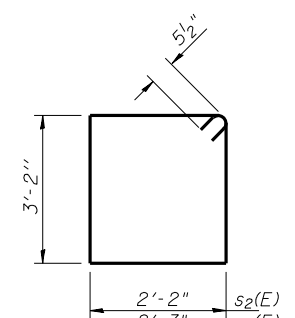


**FIELD CUTTING DIAGRAM**

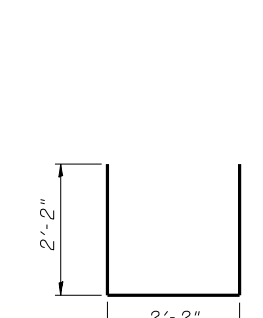
Order v<sub>2</sub>(E) and v<sub>3</sub>(E) Full length. Cut as shown and use remainder of bars in opposite face.



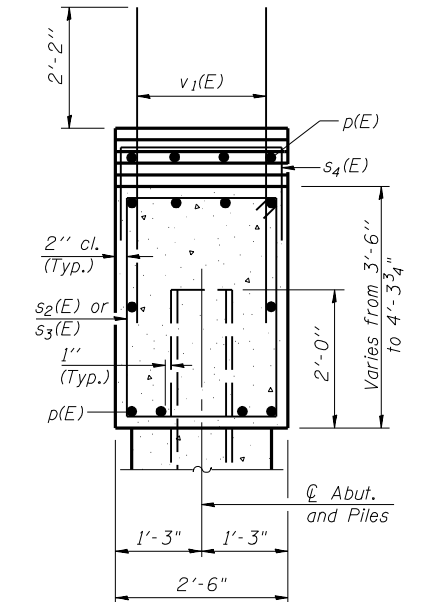
**BAR u(E)**



**BARS s<sub>2</sub>(E) & s<sub>3</sub>(E)**



**BAR s<sub>4</sub>(E)**



**SEC. THRU ABUT.**

(Dimensions at Rt. L's)

ILLINOIS DEPARTMENT OF TRANSPORTATION  
**SOUTH ABUTMENT**  
ILLINOIS ROUTE 127 OVER  
LITTLE BEARCAT CREEK  
F.A.P. ROUTE 42 - SECTION 106 (B-2)  
MONTGOMERY COUNTY  
STATION 115+99.00  
STRUCTURE NO. 068-0507

**REVISIONS**

NAME	DATE

**Lin Engineering, Ltd.**  
Consulting Engineers  
Chatham, Illinois

Designed By: RKM    Checked By: MTH    Drawn By: AJP  
Date: 04/07    File: 068-0507.DGN

Aug-16-2007 11:20:30AM:20:30 AM \$FILEABBREV\$