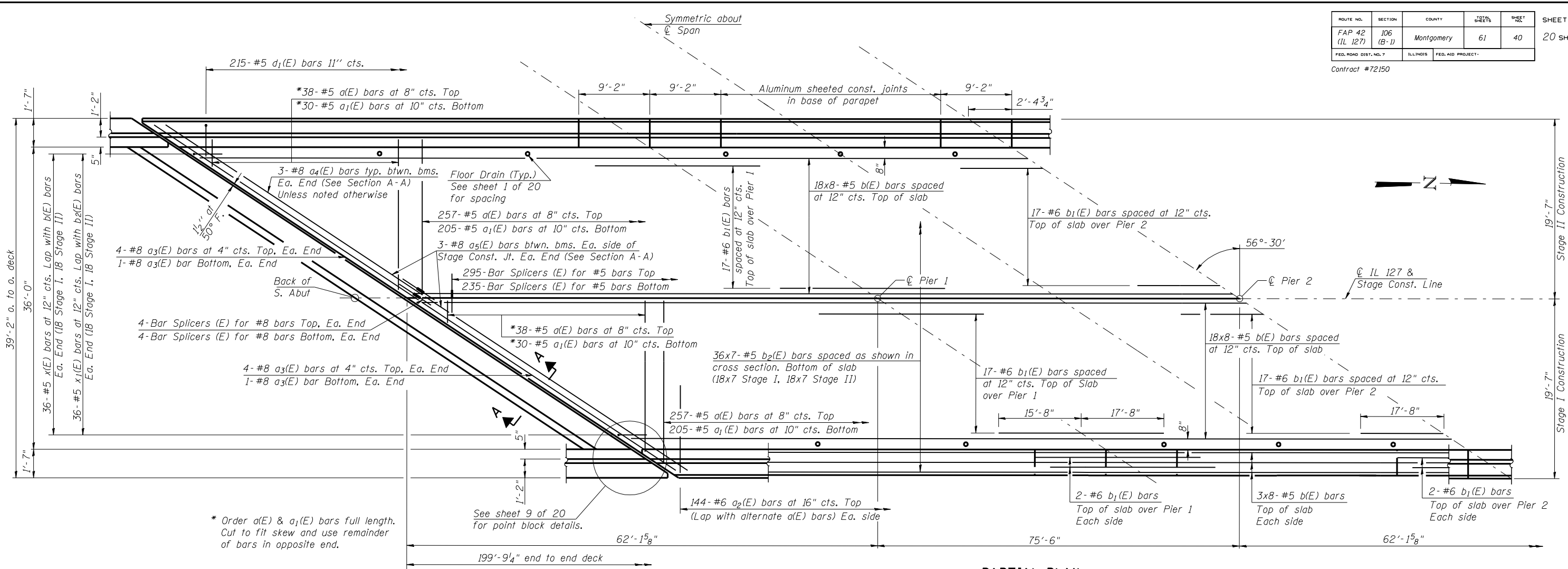


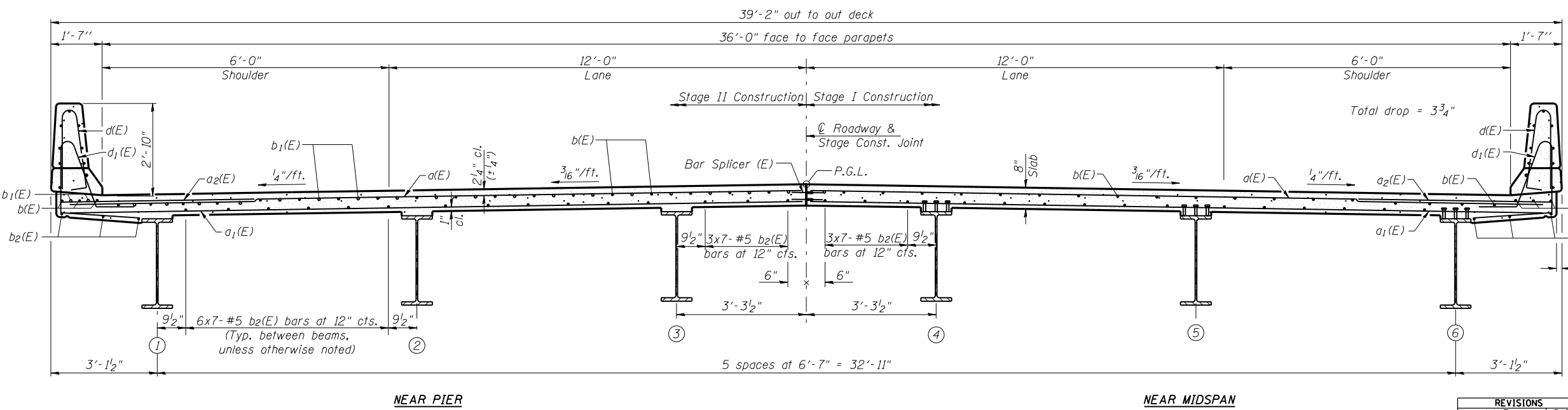
Contract #72150



* Order a(E) & a₁(E) bars full length. Cut to fit skew and use remainder of bars in opposite end.

Notes:
 The concrete for bridge decks finished according to Article 503.16(a) of the Standard Specifications shall be placed and compacted parallel to the skew in uniform increments along centerline of bridge. The machine used for finishing shall be set parallel to the skew for striking off and screeding the concrete.
 See sheets 8 of 20 for superstructure details and Bill of Material.
 Bars indicated thus 36x7-#5 etc. indicates 36 lines of bars with 7 lengths per line.
 See sheet 8 of 20 for parapet reinforcement.
 See sheet 8 of 20 for Section A-A.
 See sheet 17 of 20 for Bar Splicer Details.

MIN. BAR LAP
 #5 bar = 1'-8"



ILLINOIS DEPARTMENT OF TRANSPORTATION
SUPERSTRUCTURE
 ILLINOIS ROUTE 127 OVER
 BEARCAT CREEK
 F.A.P. ROUTE 42 - SECTION 106 (B-1)
 MONTGOMERY COUNTY
 STA. 126+58.45
 STRUCTURE NO. 068-0506

REVISIONS	
NAME	DATE

Lin Engineering, Ltd.
 Consulting Engineers
 Chatham, Illinois

Designed By: RKM
 Checked By: MTH
 Dates: 04/2007
 File: 068-0506.DGN
 Drawn By: AUF

Aug-16-2007 11:22:05AM 1:22:05 AM \$FILEABBREV\$