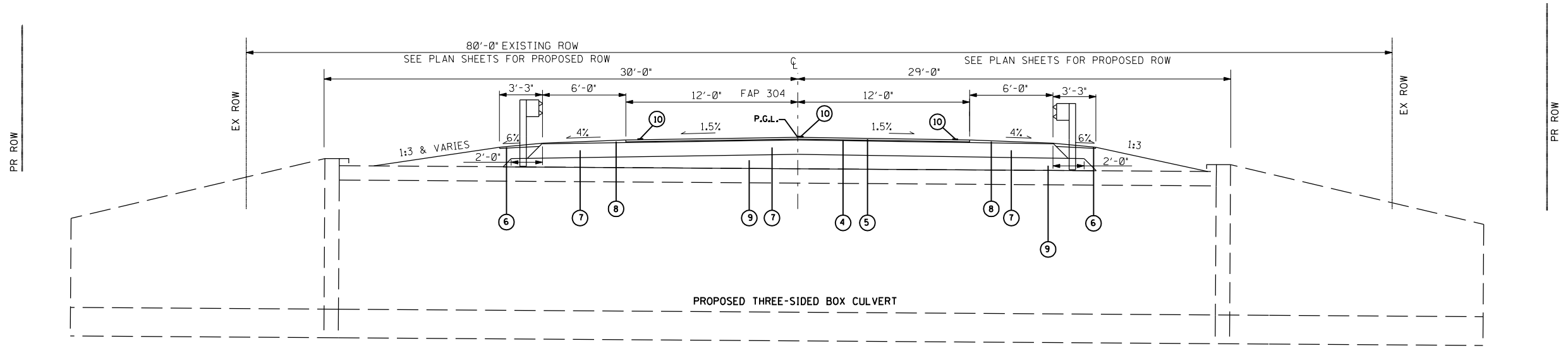


| | | | | |
|---------------------|-------------|------------------|--------------|-----------|
| F.A.P. RTE. | SECTION | COUNTY | TOTAL SHEETS | SHEET NO. |
| 304 | 2(B-5, B-6) | PIKE | 112 | 22 |
| STA. | | TO STA. | | |
| FED. ROAD DIST. NO. | ILLINOIS | FED. AID PROJECT | | |



TYPICAL FAP ROUTE 304 (IL 96)
 BREWSTER CREEK
 STA. 403+81.50 TO STA. 404+65.50
 REMOVE EXISTING PAVEMENT/STRUCTURE

LEGEND

- (E1) EXISTING AGGREGATE BASE COURSE
- (E2) EXISTING BITUMINOUS RESURFACING - 6 1/4"
- (E3) EXISTING BITUMINOUS SHOULDERS - 8"
- (4) PROPOSED LEVELING BINDER (MACHINE METHOD) (3/4" & VAR)
- (5) PROPOSED HOT-MIX ASPHALT SURFACE COURSE, MIX C, N50 (1 1/2")
- (6) PROPOSED AGGREGATE SHOULDER, TYPE B (2 1/4" & VAR)
- (7) PROPOSED HOT-MIX ASPHALT BASE COURSE, 12"
- (8) PROPOSED HOT-MIX ASPHALT SHOULDERS (2 1/2" & VARIES)
- (9) PROPOSED GRANULAR CULVERT BACKFILL
- (10) PROPOSED PAINT PAVEMENT MARKING - LINE 5"
- (11) PROPOSED HOT-MIX ASPHALT BASE COURSE WIDENING, 12"
- (12) PROPOSED HOT-MIX ASPHALT BASE COURSE, 8"
- (13) PROPOSED HOT-MIX ASPHALT BASE COURSE WIDENING, 8"

PLOT DATE = 7/31/2007
 FILE NAME = c:\p\projects\652484\pabe_r\mol\van075-0039\sh\typical.pba.dgn
 PLOT SCALE = 1/8"=1'-0" / IN.
 USER NAME = laughlin-1

| REVISIONS | | ILLINOIS DEPARTMENT OF TRANSPORTATION |
|-----------|-------------------------|---|
| NAME | DATE | |
| | | BREWSTER CREEK TYPICAL SECTIONS SHEET 2 OF 2 FAP ROUTE 304 (IL 96) SECTION 2(B-5, B-6) PIKE COUNTY |
| | | |
| | | |
| | | |
| | | |
| | | |
| | | |
| | | |
| | | |
| | | |
| SCALE: | VERT. NTS HORIZ. NTS | DRAWN BY: BNK |
| DATE: | OCTOBER 2005 | CHECKED BY: DJK |