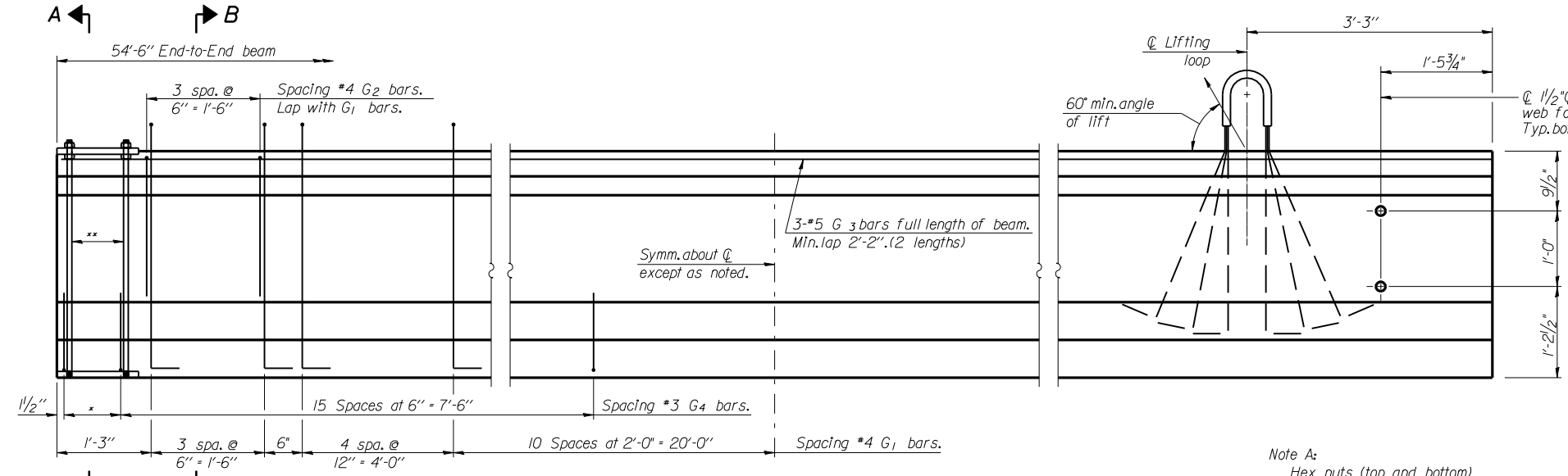


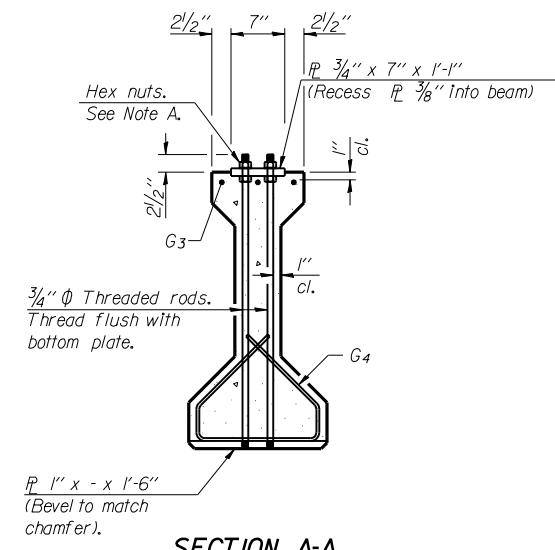
F.A.P. RTE.	SECTION	COUNTY	TOTAL SHEETS	SHEET NO.
304	2(B-5,B-6)	Pike	112	68
STA.		TO STA.		
FED. ROAD DIST. NO. 6		ILLINOIS FED. AID PROJECT		



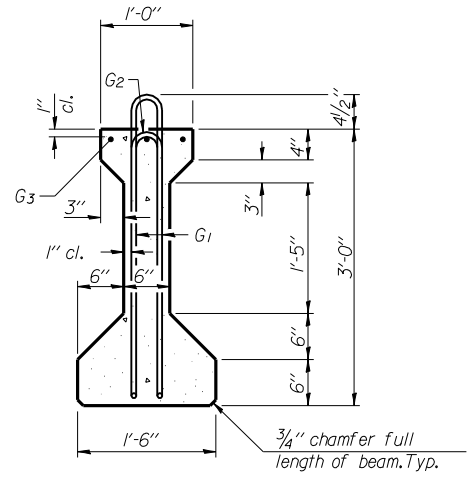
**ELEVATION OF BEAM**  
(Showing reinforcement & dimensions)

\* 3 spaces at 3' = 9'  
\*\* 4-3/4" Ø threaded dowel rods at 3" cts., each face.

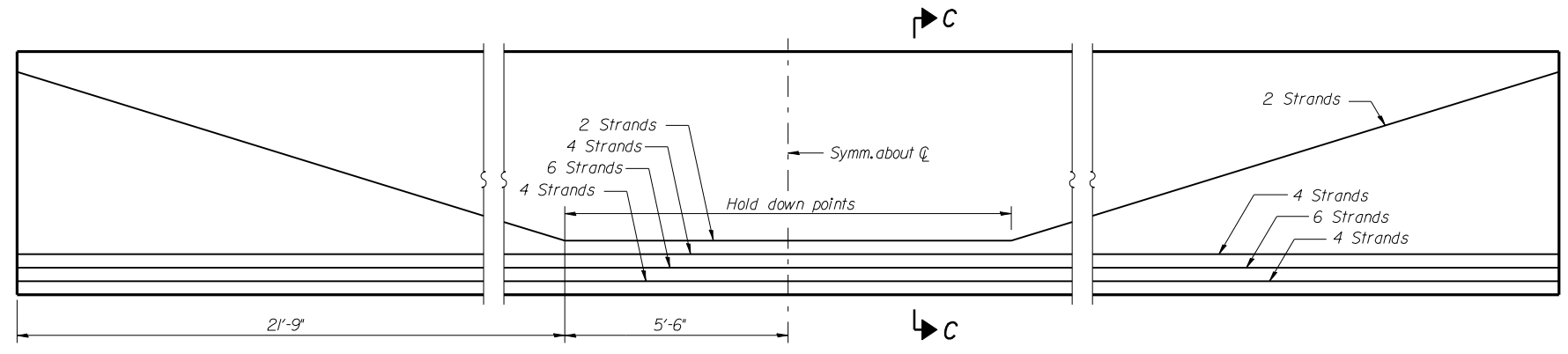
Note A:  
Hex nuts (top and bottom) with lock washers (top). Only tighten sufficiently to compress lock washers.



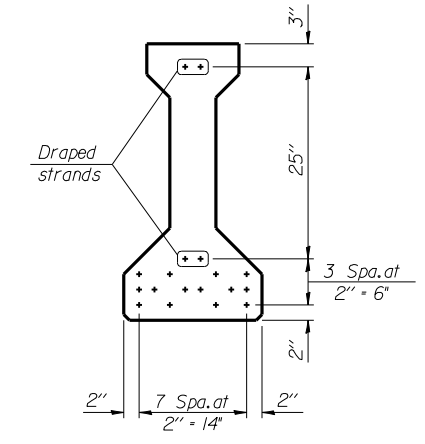
**SECTION A-A**



**SECTION B-B**



**ELEVATION OF BEAM**  
(Showing prestressing steel)

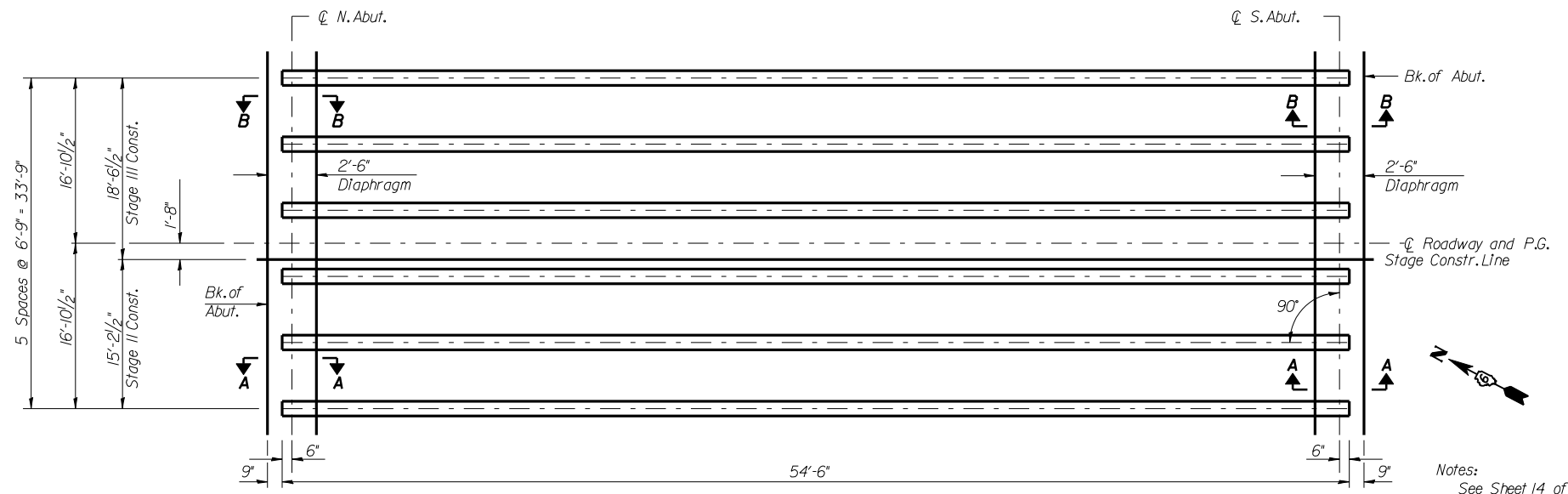


**SECTION C-C**

**BAR LIST**  
**ONE BEAM ONLY**

Bar	No.	Size	Length	Shape
G <sub>1</sub>	37	#4	7'-5"	∩L
G <sub>2</sub>	8	#4	5'-8"	∩
G <sub>3</sub>	6	#5	28'-3"	—
G <sub>4</sub>	38	#3	4'-1"	∩

Notes:  
See sheet 11 of 17 for additional details and Bill of Material.  
Required release strength, f'cl, shall be 5,000 psi.



**FRAMING PLAN**

Notes:  
See Sheet 14 of 17 for Sections A-A and B-B as shown in Framing Plan.

REVISIONS	
NAME	DATE

ILLINOIS DEPARTMENT OF TRANSPORTATION  
FRAMING PLAN & BEAM DETAILS  
ILLINOIS ROUTE 96 OVER  
BROWN CREEK  
PIKE COUNTY  
FAP RTE 304 - SECTION 2(B-5,B-6)  
STATION 456+34.50  
STRUCTURE NO. 075-0509

SCALE: N/A  
DATE: SEPT 2007

DRAWN BY: JLS  
CHECKED BY: DSP

PLOT DATE = Sep-26-2007 02:25:28PM  
FILE NAME = c:\projects\075-0509\075-0509\075-0509\075-0509.dgn  
PLOT SCALE = 0.1000000 ' / IN.  
USER NAME = laughlinr1