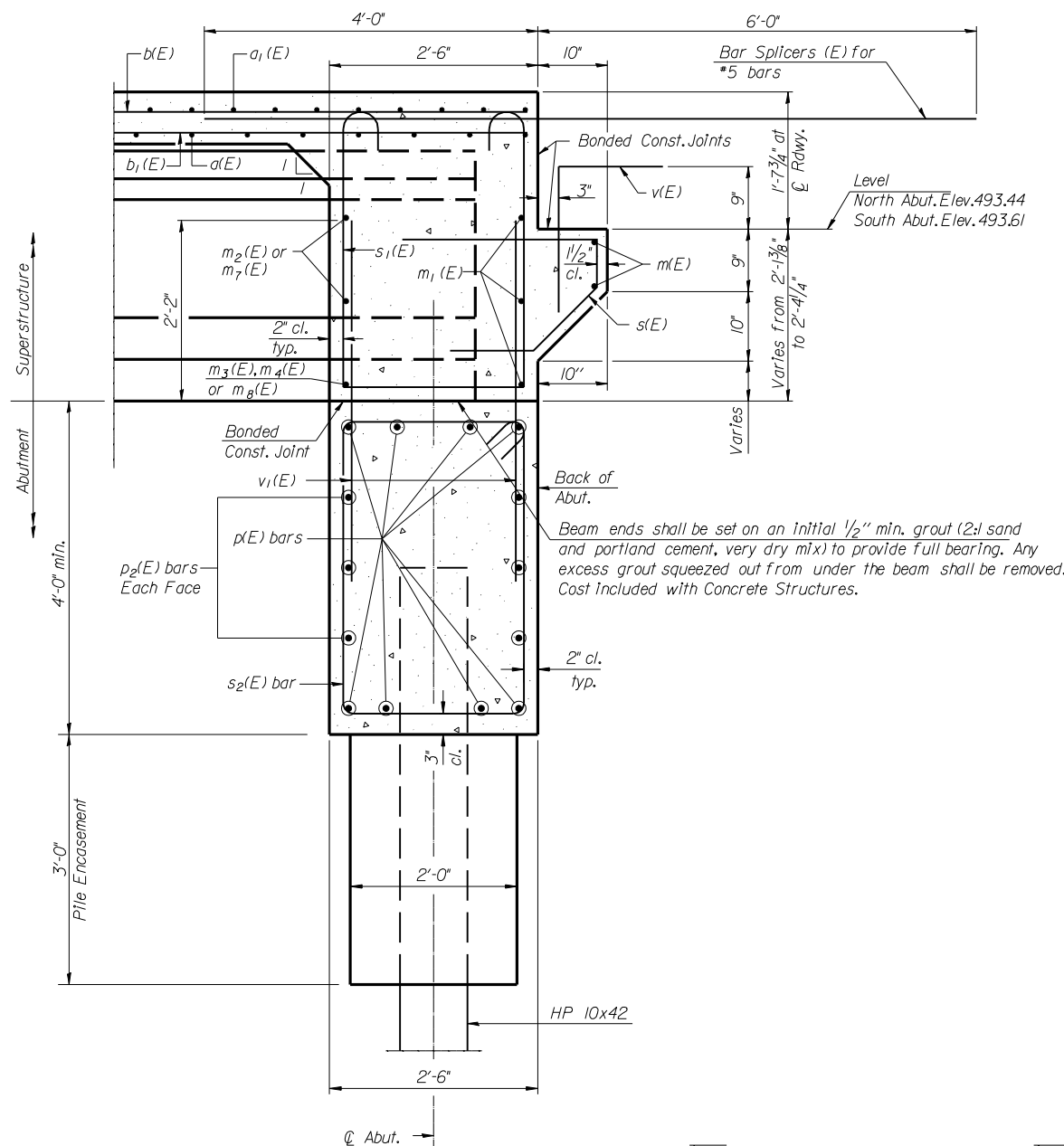


F.A.P. RTE.	SECTION	COUNTY	TOTAL SHEETS	SHEET NO.
304	2(B-5,B-6)	Pike	112	72
STA.		TO STA.		
FED. ROAD DIST. NO. 6		ILLINOIS FED. AID PROJECT		



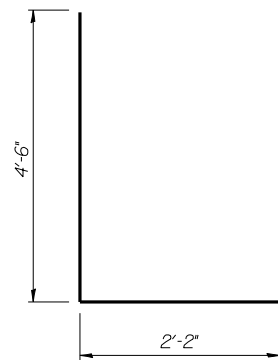
**SECTION A-A**

Section through Abutment in Stage II Construction  
Dimensions at right angles to abutment, except as shown.

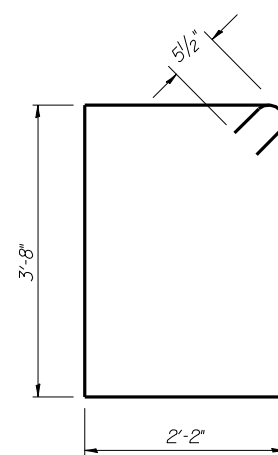
**PILE DATA**

	N. Abutment	S. Abutment
Type:	Steel HPI0x42	Steel HPI0x42
Nominal Required Bearing:	335 klps	335 klps
Allowable Resistance Available:	112 klps	112 klps
Estimated Length:	52 ft.	52 ft.
Number Required:	6*	6

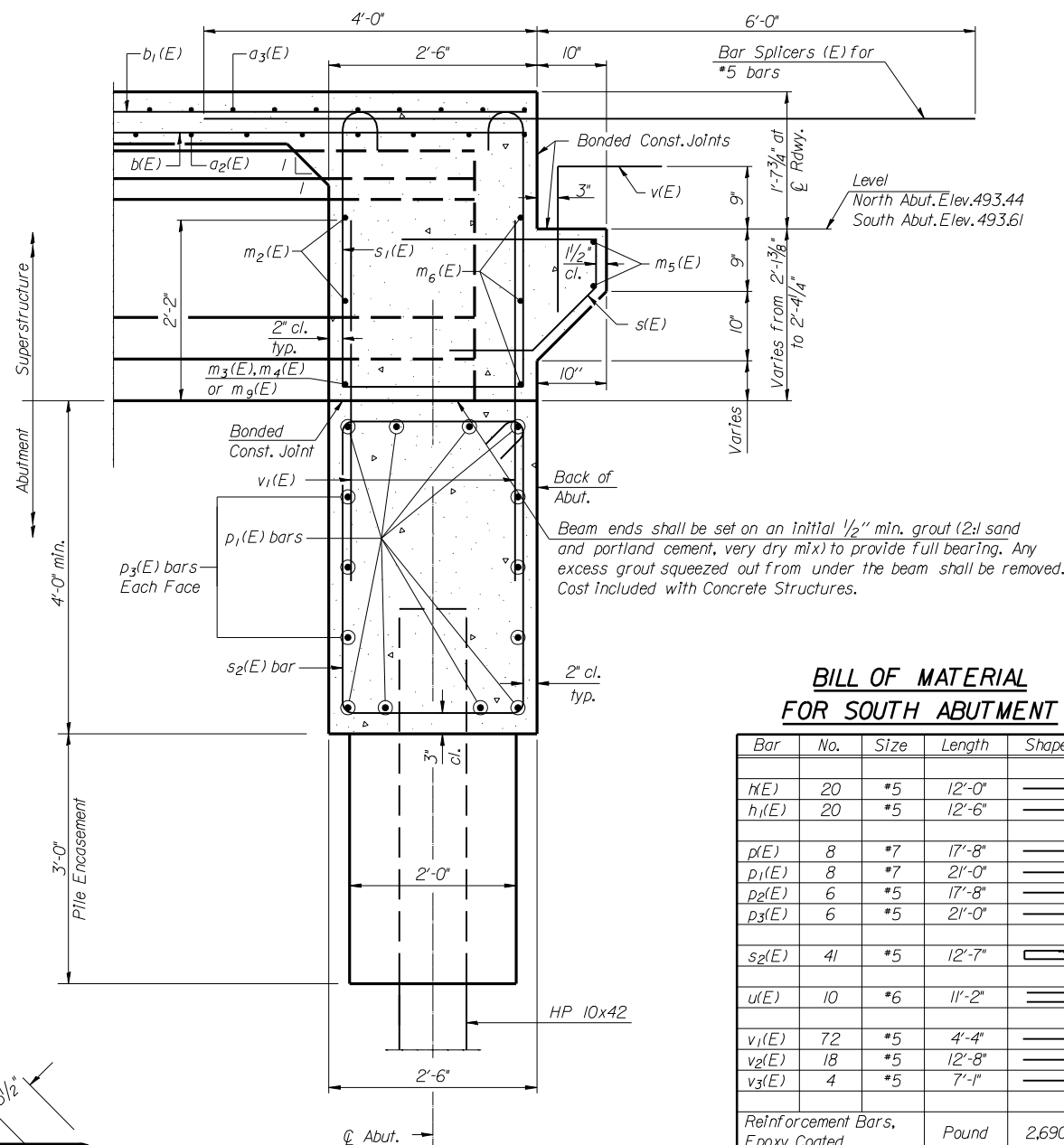
\* Includes one test pile HPI0x42 driven in a permanent location at the North Abutment.



**BAR u(E)**



**BAR s2(E)**



**SECTION B-B**

Section through Abutment in Stage III Construction  
Dimensions at right angles to abutment, except as shown.

**BILL OF MATERIAL FOR SOUTH ABUTMENT**

Bar	No.	Size	Length	Shape
h1(E)	20	*5	12'-0"	—
h1(E)	20	*5	12'-6"	—
p(E)	8	*7	17'-8"	—
p1(E)	8	*7	21'-0"	—
p2(E)	6	*5	17'-8"	—
p3(E)	6	*5	21'-0"	—
s2(E)	41	*5	12'-7"	□
u(E)	10	*6	11'-2"	□
v1(E)	72	*5	4'-4"	—
v2(E)	18	*5	12'-8"	—
v3(E)	4	*5	7'-1"	—
Reinforcement Bars, Epoxy Coated		Pound	2,690	
Porous Granular Embankment		Cu.Yds.	78	
Structure Excavation		Cu.Yds.	155	
Concrete Structures		Cu.Yds.	20.0	
Furnishing Steel Piles HPI0x42		Foot	312	
Driving Piles		Foot	312	
Concrete Encasement		Cu.Yd.	2.0	
Bar Splicers		Each	14	

**BILL OF MATERIAL FOR NORTH ABUTMENT**

Bar	No.	Size	Length	Shape
h1(E)	20	*5	12'-0"	—
h1(E)	20	*5	12'-6"	—
p(E)	8	*7	17'-8"	—
p1(E)	8	*7	21'-0"	—
p2(E)	6	*5	17'-8"	—
p3(E)	6	*5	21'-0"	—
s2(E)	41	*5	12'-7"	□
u(E)	10	*6	11'-2"	□
v1(E)	72	*5	4'-4"	—
v2(E)	18	*5	12'-8"	—
v3(E)	4	*5	7'-1"	—
Reinforcement Bars, Epoxy Coated		Pound	2,690	
Porous Granular Embankment		Cu.Yds.	78	
Structure Excavation		Cu.Yds.	159	
Concrete Structures		Cu.Yds.	20.0	
Furnishing Steel Piles HPI0x42		Foot	260	
Driving Piles		Foot	260	
Test Pile Steel HPI0x42		Each	1	
Concrete Encasement		Cu.Yd.	2.0	
Bar Splicers		Each	14	

Reinforcement bars designated (E) shall be epoxy coated.  
Bars indicated thus 1 x 2-\*5 etc. indicates 1 line of bars with 2 lengths per line.

**Notes:**

See sheets 7 of 17, 8 of 17 and 13 of 17 for location of Sections A-A and B-B.

See sheet 2 of 17 for section thru abutment showing drainage.

REVISIONS	
NAME	DATE

ILLINOIS DEPARTMENT OF TRANSPORTATION  
**ABUTMENT DETAILS**  
 ILLINOIS ROUTE 96 OVER  
 BROWN CREEK  
 PIKE COUNTY  
 FAP RTE 304 - SECTION 2(B-5,B-6)  
 STATION 456+34.50  
 STRUCTURE NO. 075-0509

SCALE: N/A  
 DATE: SEPT 2007

DRAWN BY: JLS  
 CHECKED BY: DSP