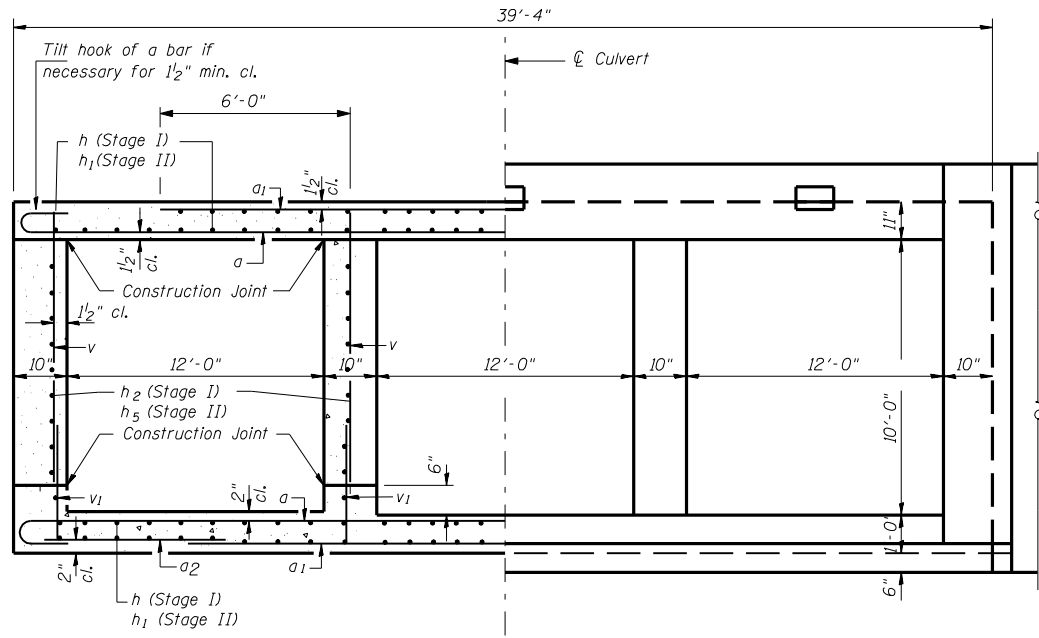
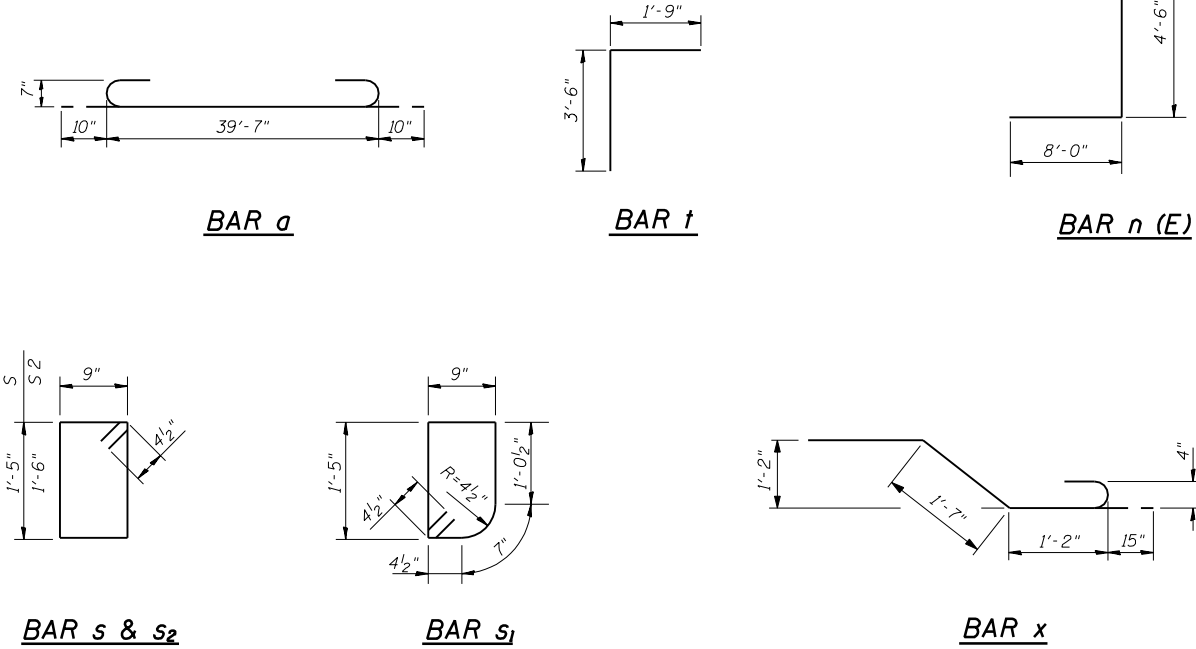


F.A.P. RTE.	SECTION	COUNTY	TOTAL SHEETS	SHEET NO.
304	3B-1	PIKE	51	33
STA.		TO STA.		
FED. ROAD DIST. NO.		ILLINOIS FED. AID PROJECT		
Sheet 4 of 8 Sheets				



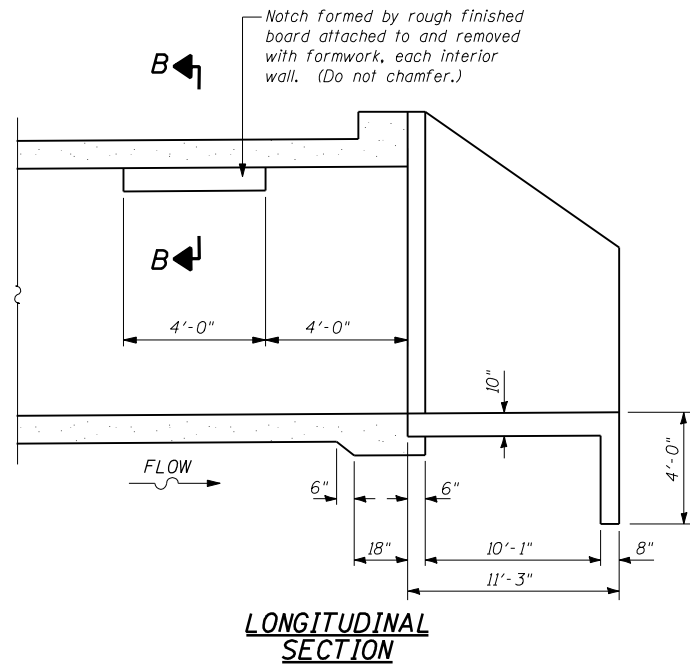
HALF SECTION THRU BARREL

HALF END ELEVATION

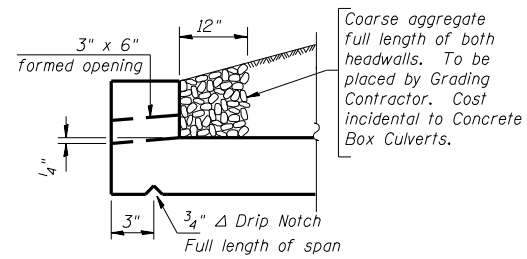
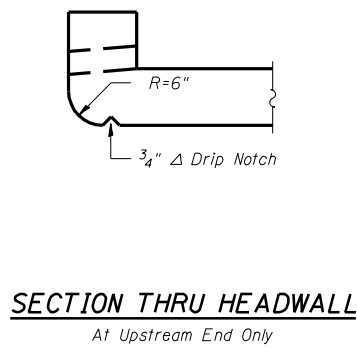


**BILL OF MATERIAL**

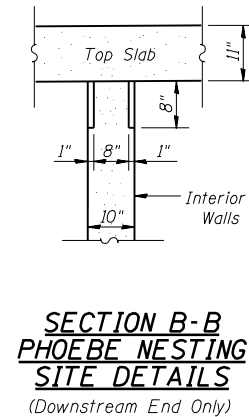
Bar	No.	Size	Length (ft)	Shape
a	230	#7	41'-3"	U
a <sub>1</sub>	242	#7	25'-3"	U
a <sub>2</sub>	120	#5	9'-3"	U
h	278	#5	20'-9"	—
h <sub>1</sub>	278	#5	23'-9"	—
h <sub>2</sub>	80	#7	21'-5"	—
h <sub>3</sub>	16	#6	21'-1"	—
h <sub>4</sub>	24	#7	21'-6"	—
h <sub>5</sub>	80	#7	24'-5"	—
h <sub>6</sub>	32	#4	16'-6"	—
h <sub>7</sub>	32	#4	13'-9"	—
n(E)	76	#6	12'-6"	L
s	78	#4	5'-1"	□
s <sub>1</sub>	39	#4	4'-11"	□
s <sub>2</sub>	39	#4	5'-3"	□
t	120	#4	12'-6"	U
t <sub>1</sub>	116	#4	10'-11"	—
t <sub>2</sub>	36	#4	14'-6"	—
v	636	#4	10'-3"	—
v <sub>1</sub>	636	#4	2'-9"	—
v <sub>2</sub>	24	#4	5'-9"	—
v <sub>3</sub>	26	#4	7'-6"	—
v <sub>4</sub>	26	#4	9'-3"	—
v <sub>5</sub>	18	#4	11'-0"	—
x	78	#4	5'-9"	U
x <sub>1</sub>	12	#4	20'-6"	—
w	16	#6	24'-3"	—
w <sub>1</sub>	16	#6	27'-9"	—
w <sub>2</sub>	28	#6	32'-0"	—
Item	Unit	Qty.		
Concrete Box Culverts	Yd <sup>3</sup>	419		
Reinforcement Bars	lbs	67480		
Reinforcement Bars, Epoxy Coated	lbs	1430		



(Horizontal Dimension @ RT <'s to FAP Route 304)



**DRAIN DETAIL**



REVISIONS	
NAME	DATE

ILLINOIS DEPARTMENT OF TRANSPORTATION  
**CULVERT DETAILS**  
**IL 96 OVER JIMTOWN BRANCH**  
**FAP 304 SECTION 3B-1**  
**STA. 784+76**  
**PIKE COUNTY STR. 075-2506**  
 SCALE: NTS DRAWN BY LP  
 DATE: \$DATE CHECKED BY MJS

**The Upchurch Group**  
 HILLSIDE, IL. (708) 449-2321  
 MATTOON, IL. (217) 235-3177

PLOT DATE = Aug-31-2007 11:49:57AM  
 FILE NAME = c:\projects\653704\upchurch\final\culvert.dwg  
 PLOT SCALE = 42.3525 / IN.  
 USER NAME = laughlin-1