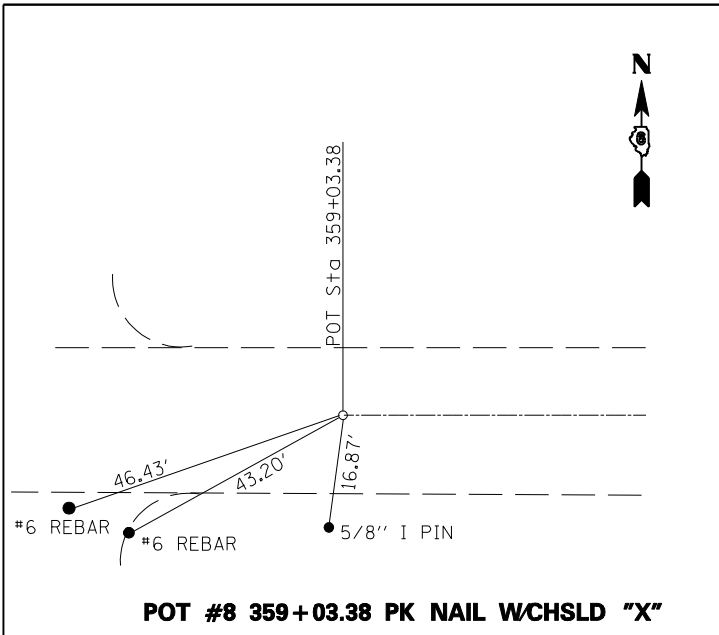
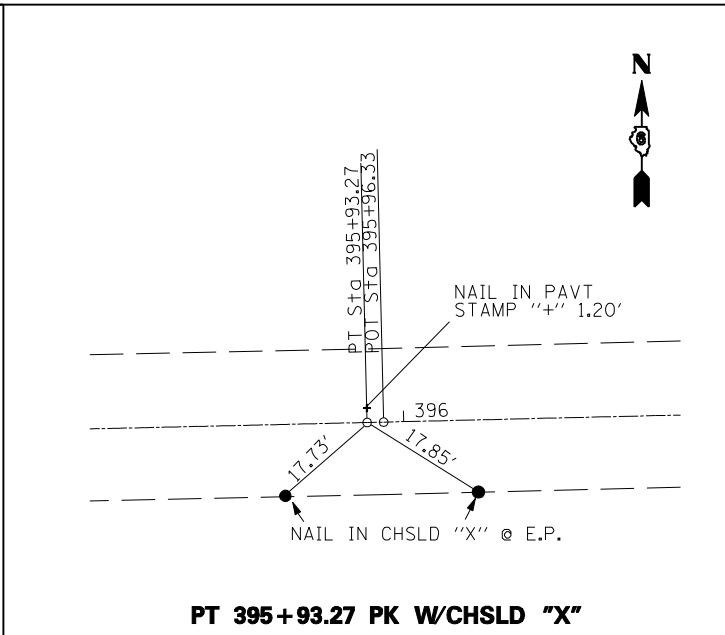


F.A.P. RTE.	SECTION	COUNTY	TOTAL SHEETS	SHEET NO.
751	101B-2	PIKE	48	14
STA.		TO STA.		
FED. ROAD DIST. NO.	ILLINOIS	FED. AID PROJECT		

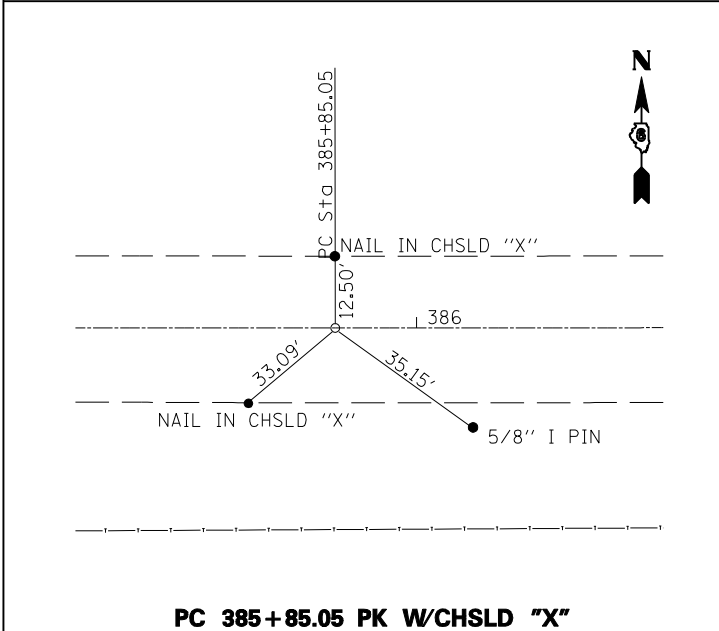


POT #8 359+03.38 PK NAIL W/CHSLD "X"

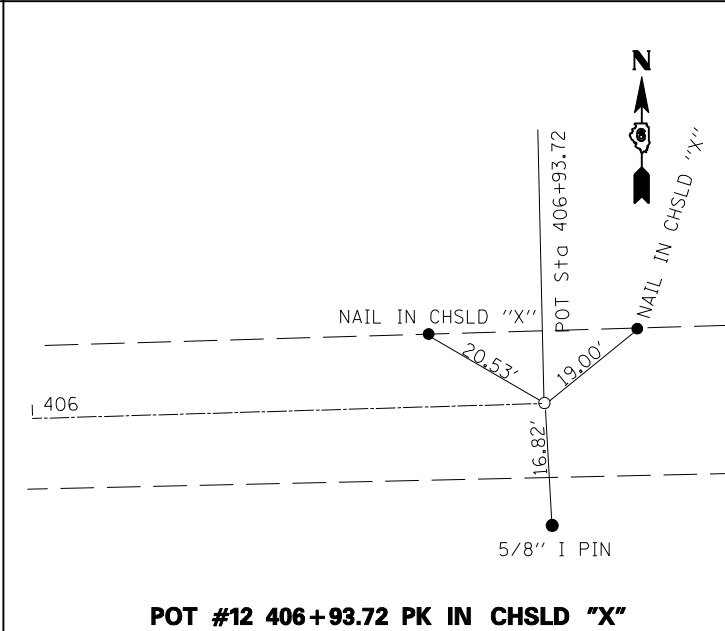


PT 395+93.27 PK W/CHSLD "X"

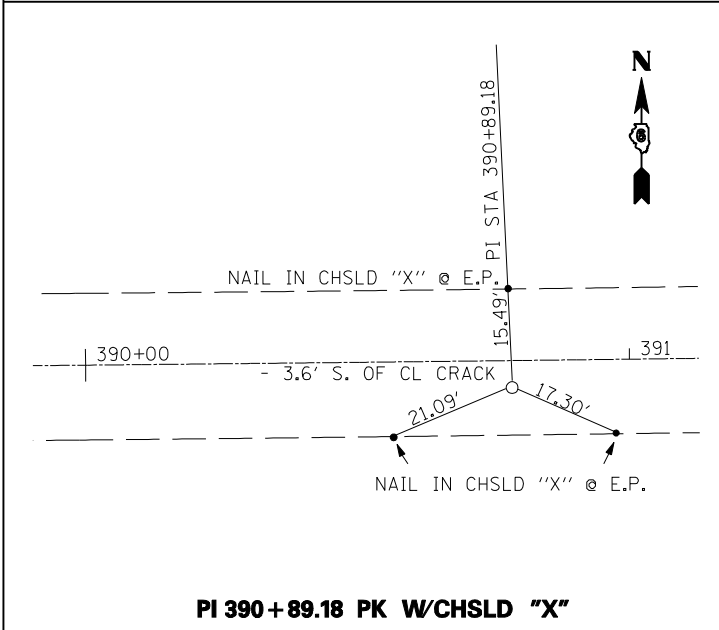
BM #100 FIND CHIS "□" TOP HDWL @ NE COR. EXIST. STRUCT. (USED EL FROM SHEET 6 SBI ROUTE 106 PIKE CO. PROJ F-378(4) C-96-059-64 DATED 9/28/64) AT STA. 381+22.5; 23.00 LT NGVD 29 DATUM = 463.73 FT



PC 385+85.05 PK W/CHSLD "X"



POT #12 406+93.72 PK IN CHSLD "X"



PI 390+89.18 PK W/CHSLD "X"

REVISIONS	
NAME	DATE

ILLINOIS DEPARTMENT OF TRANSPORTATION

BENCHMARKS & CROSS TIES

SCALE: VERT. DRAWN BY
 HORIZ. CHECKED BY
 DATE

ct:\Projects\0654904\sheet\ignote.dgn
 Aug-15-2007 01:40:11PM
 *REF01