

F.A.P. RTE.	SECTION	COUNTY	TOTAL SHEETS	SHEET NO.
608	122BR-1	MACOUPIN	6	1

STATE OF ILLINOIS
DEPARTMENT OF TRANSPORTATION
DIVISION OF HIGHWAYS

**PROPOSED
HIGHWAY PLANS**

FAP ROUTE 608 (IL 111)
SECTION 122BR-1

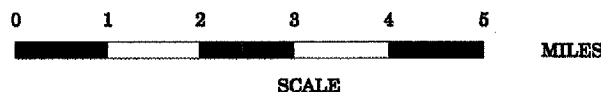
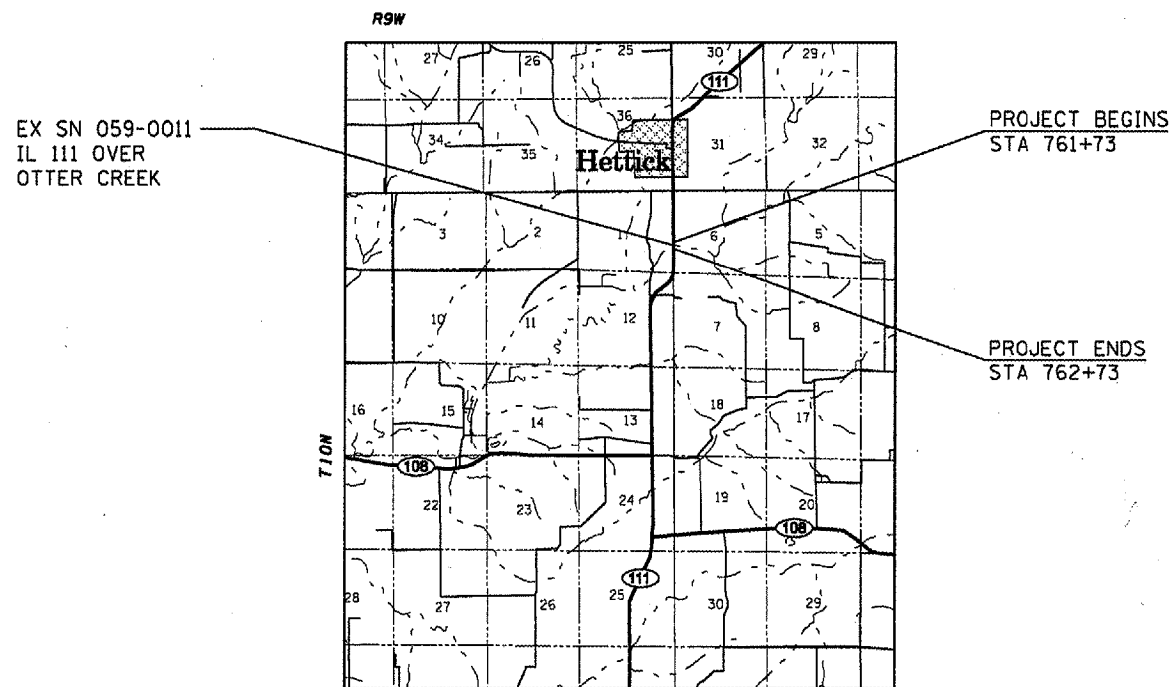
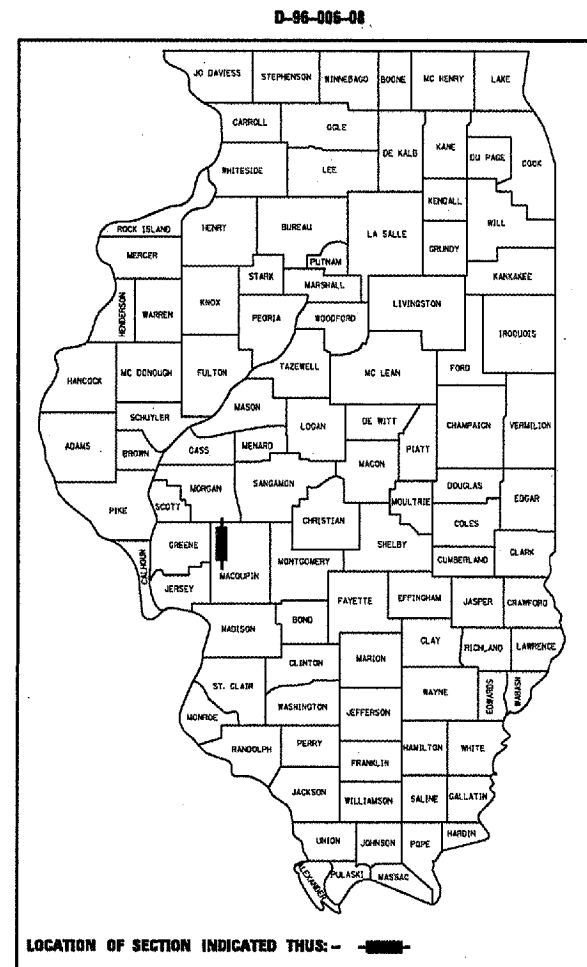
MACOUPIN COUNTY
C-96-106-08

INDEX OF SHEETS

- 1 COVER SHEET
- 2 GENERAL NOTES
- 3 SUMMARY OF QUANTITIES
- 4-6 SHORING DETAILS

HIGHWAY STANDARDS

- 000001-04
- 701001-01
- 701006-02
- 701201-02
- 701301-02
- 702001-06



GROSS LENGTH OF PROJECT = 100 FEET = 0.02 MILES
NET LENGTH OF PROJECT = 100 FEET = 0.02 MILES



STATE OF ILLINOIS
DEPARTMENT OF TRANSPORTATION
DIVISION OF HIGHWAYS

SUBMITTED August 22, 2007

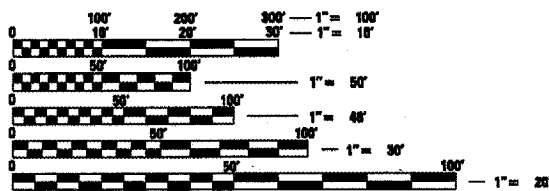
[Signature]
DEPUTY DIRECTOR OF HIGHWAYS, REGION ENGINEER

October 12, 2007
[Signature]
ENGINEER OF DESIGN AND ENVIRONMENT

Interim October 12, 2007
[Signature]
DIRECTOR OF HIGHWAYS, CHIEF ENGINEER

**PRINTED BY THE AUTHORITY
OF THE STATE OF ILLINOIS**

PROJECT ENGINEER: SAL MADONIA (217) 782-4761
SQUAD LEADER: JEFFREY P. MYERS (217) 524-7940



FULL SIZE PLANS HAVE BEEN PREPARED USING STANDARD ENGINEERING SCALES. REDUCED SIZED PLANS WILL NOT CONFORM TO STANDARD SCALES. IN MAKING MEASUREMENTS ON REDUCED PLANS, THE ABOVE SCALES MAY BE USED.

J.U.L.I.E.
JOINT UTILITY LOCATION INFORMATION FOR EXCAVATION
1-800-892-0123

CONTRACT NO. 72B50

F.A.P. RTE.	SECTION	COUNTY	TOTAL SHEETS	SHEET NO.
608	122BR-1	MACOUPIN	6	2
STA.		TO STA.		
FED. ROAD DIST. NO. ILLINOIS FED. AID PROJECT				

GENERAL NOTES

1. PLAN DIMENSIONS AND DETAILS RELATIVE TO EXISTING STRUCTURE HAVE BEEN TAKEN FROM EXISTING PLANS AND ARE SUBJECT TO NOMINAL CONSTRUCTION VARIATIONS. IT SHALL BE THE CONTRACTOR'S RESPONSIBILITY TO VERIFY SUCH DIMENSIONS AND DETAILS IN THE FIELD AND MAKE NECESSARY APPROVED ADJUSTMENTS PRIOR TO CONSTRUCTION OR ORDERING OF MATERIALS. SUCH VARIATIONS SHALL NOT BE CAUSE FOR ADDITIONAL COMPENSATION OR A CHNAGE IN THE SCOPE OF THE WORK. HOWEVER, THE CONTRACTOR WILL BE PAID FOR THE QUANTITY ACTUALLY FURNISHED AT THE UNIT PRICE FOR THE WORK.

DISTRICT SIX	
EXAMINED <u>Aug 13</u> 20 <u>07</u> <i>[Signature]</i>	
OPERATIONS ENGINEER	
EXAMINED <u>Aug 16</u> 20 <u>07</u> <i>[Signature]</i>	
PROGRAM IMPLEMENTATION ENGINEER	
EXAMINED <u>Aug 22</u> 20 <u>07</u> <i>[Signature]</i>	
PROGRAM DEVELOPMENT ENGINEER	

PLOT DATE : Aug 28 2007 8:15:28M
 FILE NAME : \\s01c01\proj\122BR-1\122BR-1.dgn
 PLOT SCALE : 1/8" = 1'-0"
 USER NAME : jay@esr.com

REVISIONS	
NAME	DATE

ILLINOIS DEPARTMENT OF TRANSPORTATION
 GENERAL NOTES
 FAP 608 (IL 108)
 SECTION 122BR-1
 MACOUPIN COUNTY
 SCALE: VERT. _____
 DATE _____ DRAWN BY _____
 CHECKED BY _____

F.A.P. RTE.	SECTION	COUNTY	TOTAL SHEETS	SHEET NO.
608	122BR-1	MACOUPIN	6	3
STA.		TO STA.		
FED. ROAD DIST. NO.	ILLINOIS	FED. AID PROJECT		

ILLINOIS DEPARTMENT OF TRANSPORTATION
SUMMARY OF QUANTITIES

CODE NO.	ITEM	UNIT	100% STATE SFTY-2A	TOTAL QUANTITY
50500405	FURNISHING AND ERECTING STRUCTURAL STEEL	POUND	74,330	74,330
67000400	ENGINEER'S FIELD OFFICE, TYPE A	CAL MO	2	2
67100100	MOBILIZATION	L SUM	1	1
70100450	TRAFFIC CONTROL AND PROTECTION, STANDARD 701201	L SUM	1	1

PLOT DATE : Aug-21-2007 07:18:04M
 USER : j...
 PLOT SCALE : 1/8"=1'-0"
 USER NAME : j...@illinois.gov

REVISIONS	
NAME	DATE

ILLINOIS DEPARTMENT OF TRANSPORTATION
 SUMMARY OF QUANTITIES
 FAP 608 (IL 108)
 SECTION 122BR-1
 MACOUPIN COUNTY

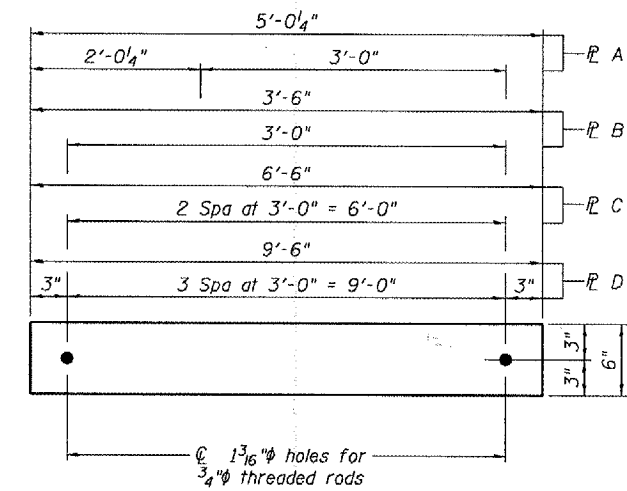
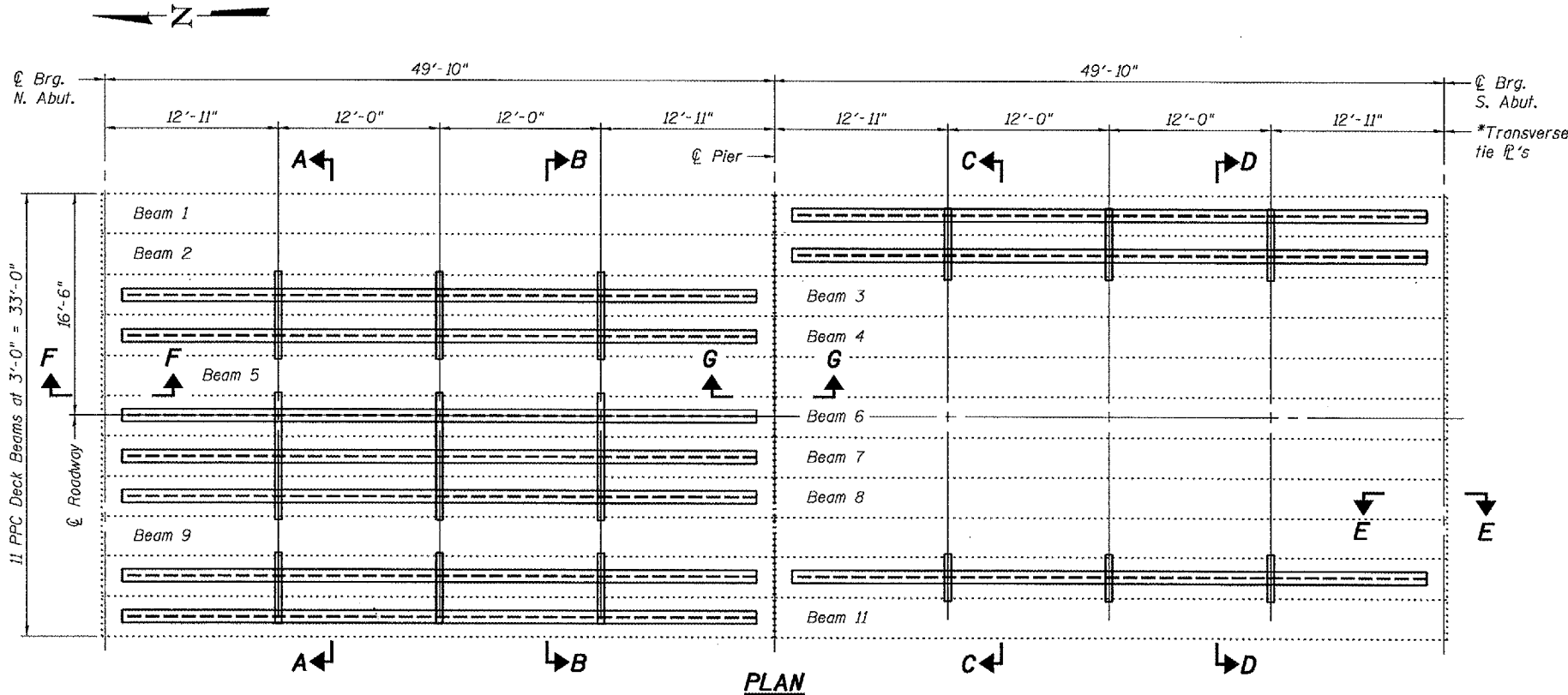
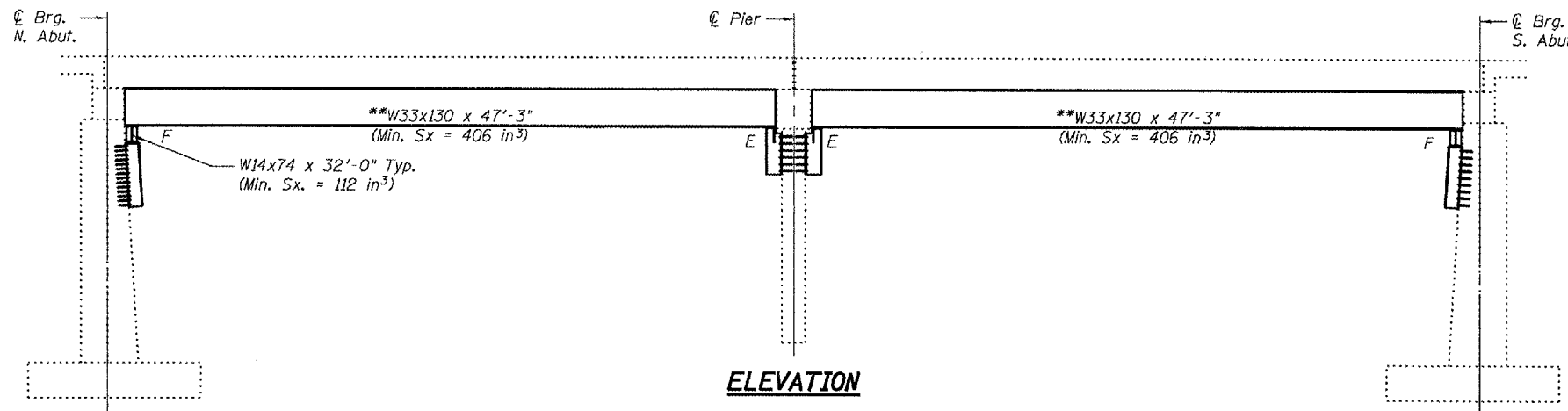
VERT. SCALE: DRAWN BY
 HORIZ. CHECKED BY
 DATE

STATE OF ILLINOIS
DEPARTMENT OF TRANSPORTATION

ROUTE NO.	SECTION	COUNTY	TOTAL SHEETS	SHEET NO.
		Macoupin	6	4
FED. ROAD DIST. NO. 7		ILLINOIS FED. AID PROJECT-		

SHEET NO. 1
3 SHEETS

Contract Number: 72B50



TRANSVERSE TIE R'S
R A 1/2" x 5'-0 1/4" x 6" (6 Req'd)
R B 1/2" x 3'-6" x 6" (3 Req'd)
R C 1/2" x 6'-6" x 6" (3 Req'd)
R D 1/2" x 9'-6" x 6" (3 Req'd)

*Transverse tie R's (3 per span). Place additional shims at midpoints between tie R's. Securely weld shims to top flange of support beam. Minimum shim size is 6" x flange width.

**Contractor is to verify beam length prior to ordering material. Other sections meeting the section modulus requirements shown may be allowed subject to approval by the Bureau of Bridges and Structures. Maximum Girder depth = 36". No additional payment will be allowed if the contractor chooses a heavier steel section than the one specified in the plans

TOTAL BILL OF MATERIAL

ITEM	UNIT	QUANTITY
Furnishing and Erecting Structural Steel	Pound	74,330

PLAN AND ELEVATION
F.A.P. RT. 608
MACOUPIN COUNTY
SN 059-0011

DESIGNED	Adrian J. Holloway	EXAMINED	August 30, 2007
CHECKED	Victor A. Votiz	PASSED	Palmer E. Anderson
DRAWN	[Signature]	ENGINEER OF BRIDGES AND STRUCTURES	
CHECKED	ATH UHV		

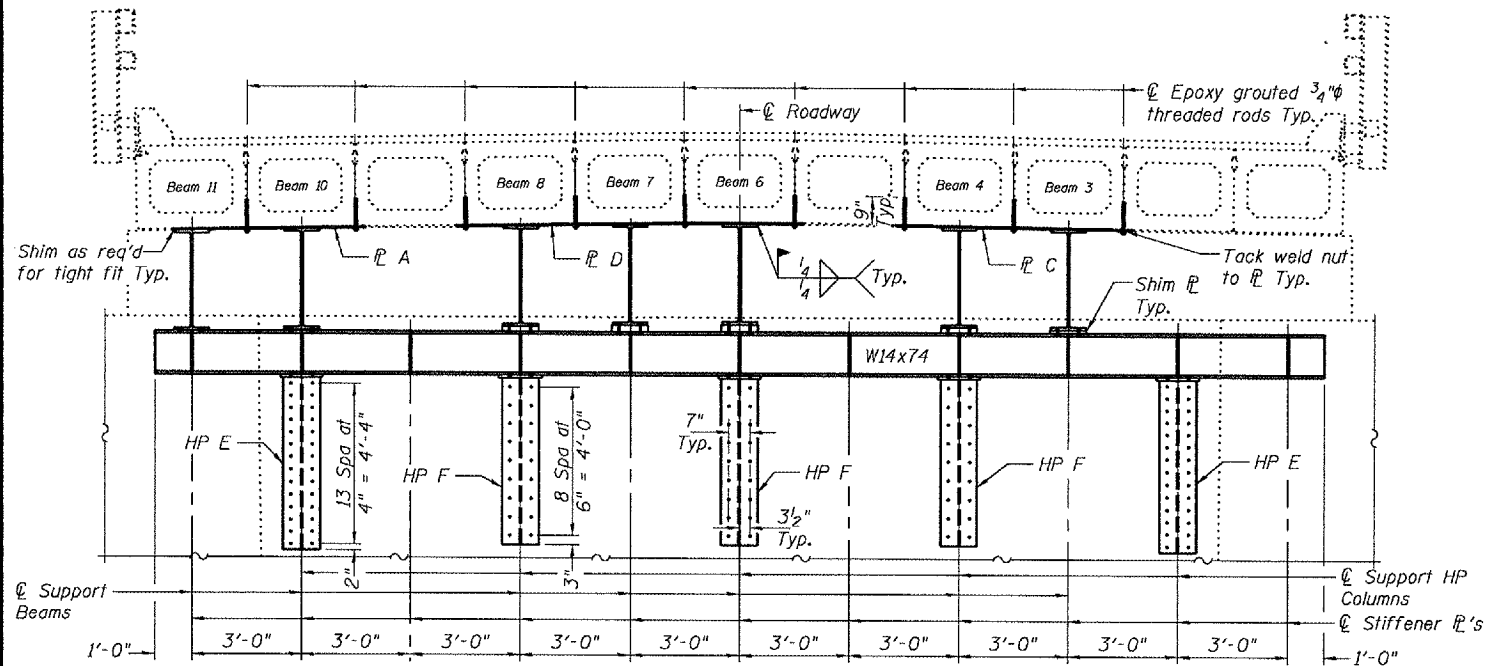


Expires: November 30, 2008

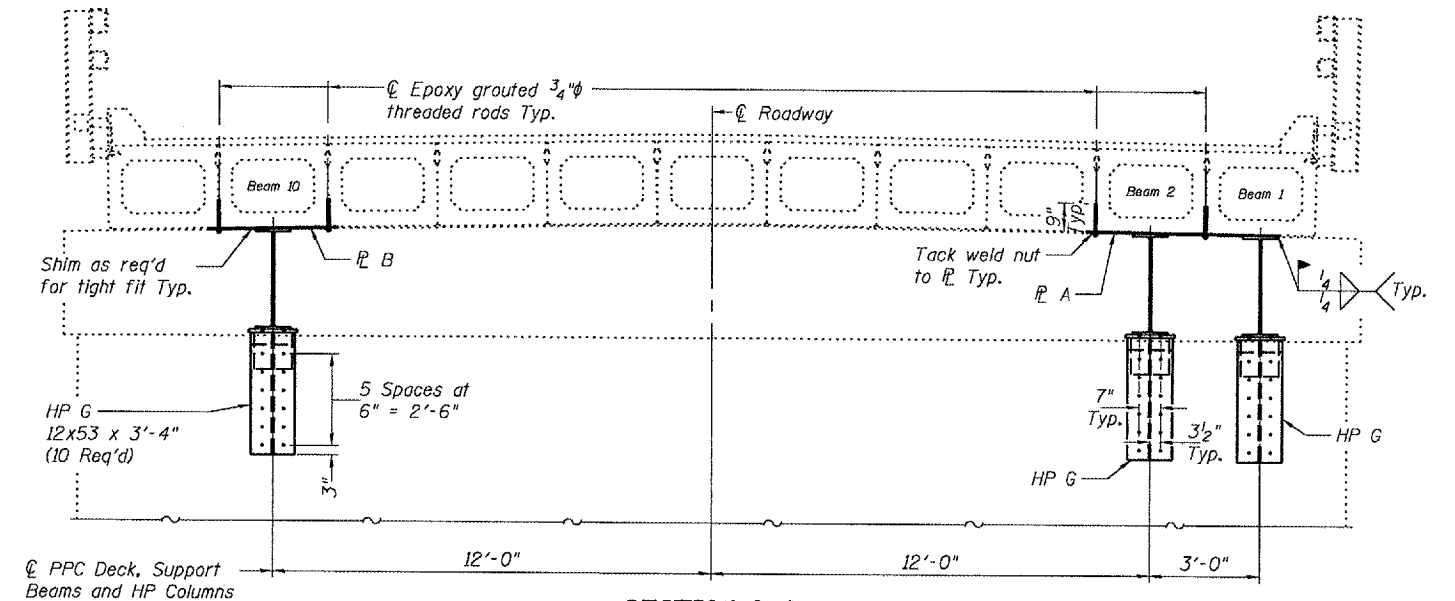
STATE OF ILLINOIS
DEPARTMENT OF TRANSPORTATION

ROUTE NO.	SECTION	COUNTY	TOTAL SHEETS	SHEET NO.
		Macoupin	6	5
Contract Number: 72B50				

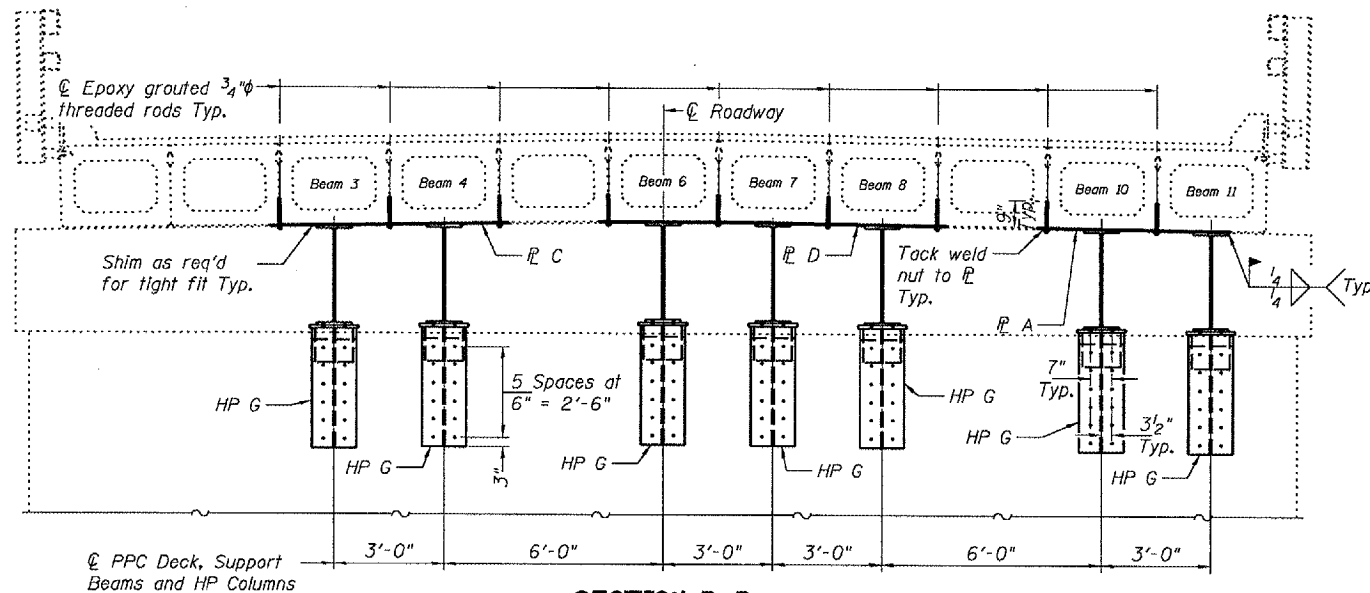
SHEET NO. 2
3 SHEETS



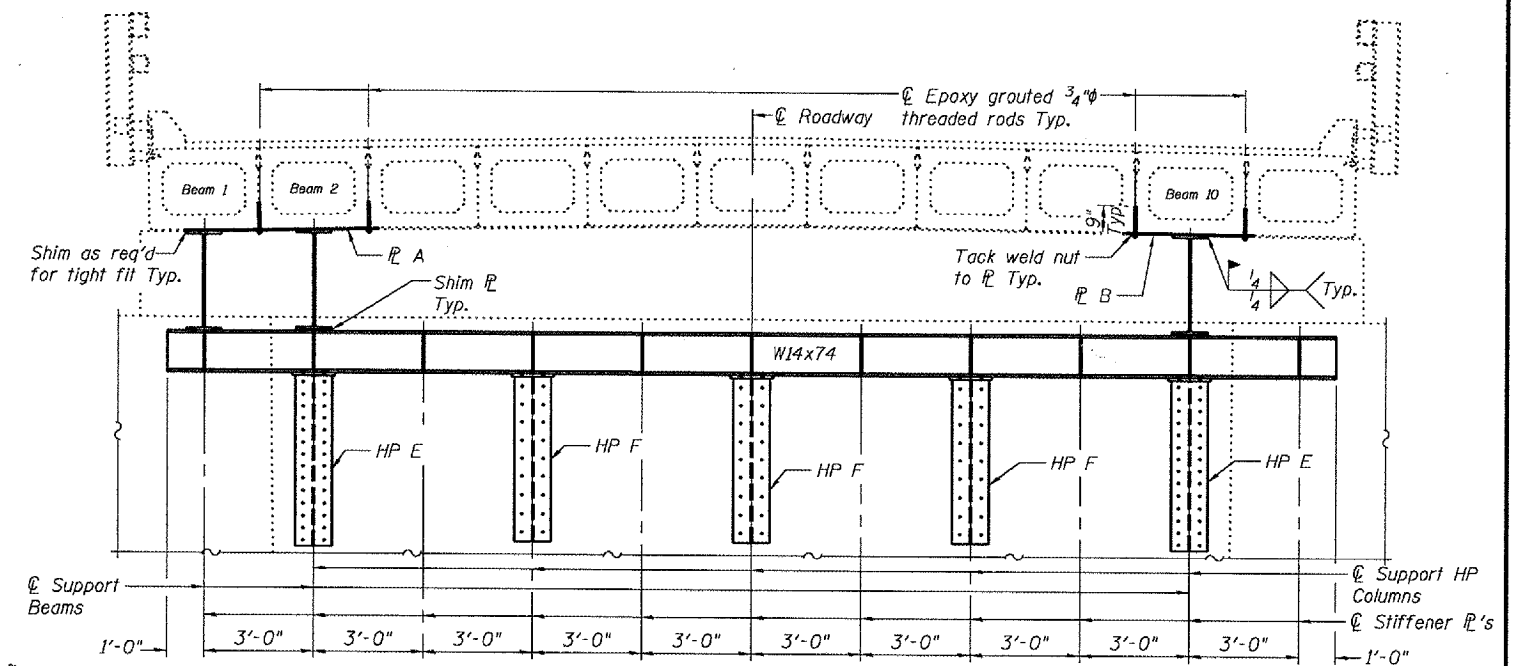
SECTION A-A
SPAN 1 LOOKING NORTH



SECTION C-C
SPAN 2 LOOKING NORTH



SECTION B-B
SPAN 1 LOOKING SOUTH



SECTION D-D
SPAN 2 LOOKING SOUTH

DESIGNED	A.T.H.	August 30, 2007
CHECKED	V.H.V.	EXAMINED <i>Carl Perry</i>
DRAWN	Drew Christopher	PASSED <i>Ralph E. Anderson</i>
CHECKED	A.T.H. V.H.V.	REPAIR PLANS UNIT CHIEF ENGINEER OF BRIDGES AND STRUCTURES

CROSS SECTIONS
F.A.P. RT. 608
MACOUPIN COUNTY
SN 059-0011

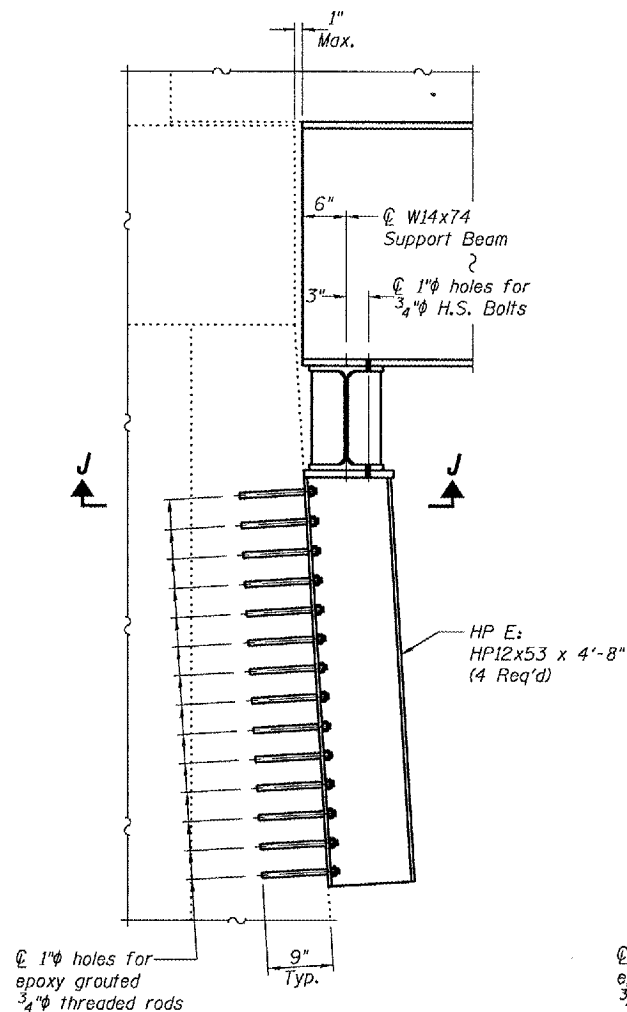
STATE OF ILLINOIS
DEPARTMENT OF TRANSPORTATION

ROUTE NO.	SECTION	COUNTY	TOTAL SHEETS	SHEET NO.
		Macoupin	6	6
FED. ROAD DIST. NO. 7	ILLINOIS	FED. AID PROJECT		

SHEET NO. 3

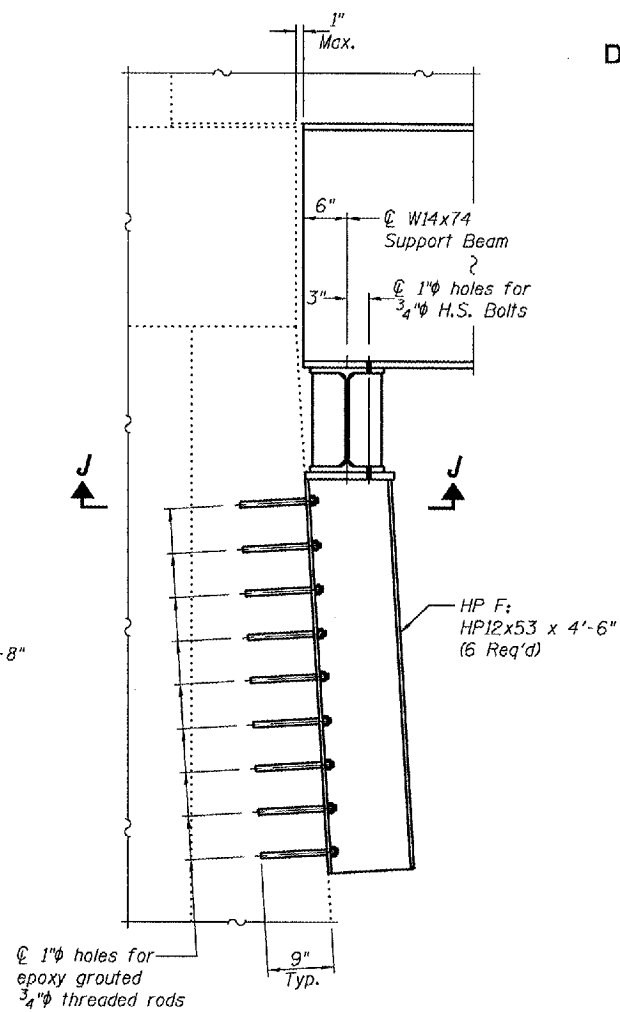
3 SHEETS

Contract Number: 72B50



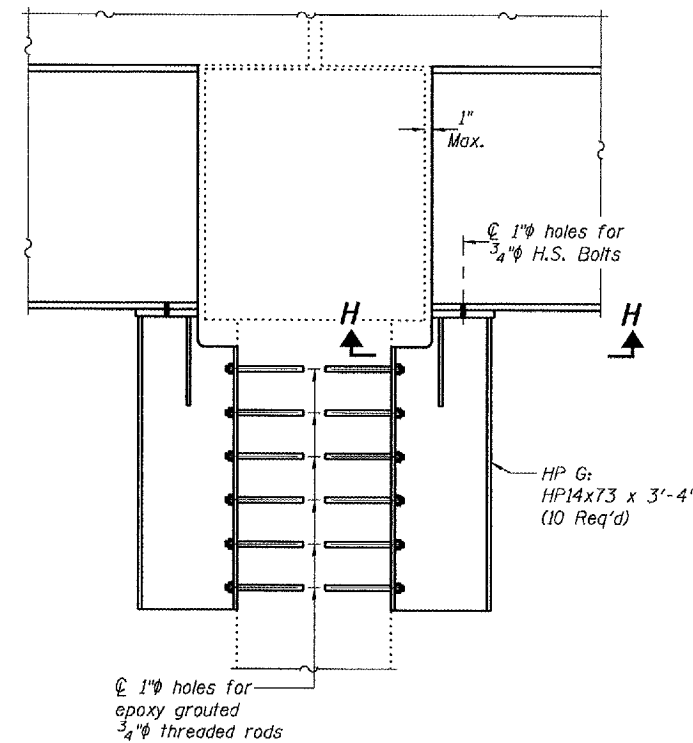
SECTION E-E

(Showing Edge Supports)

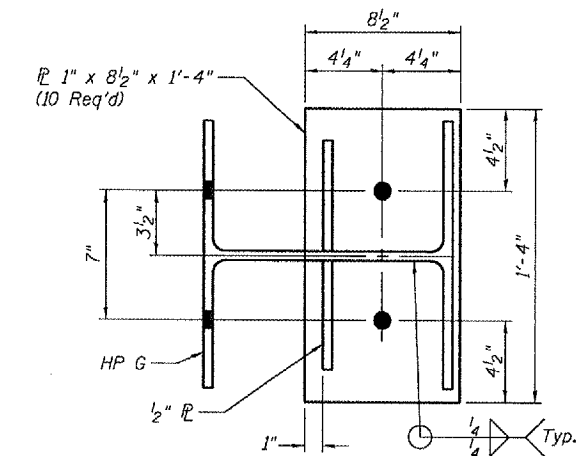


SECTION F-F

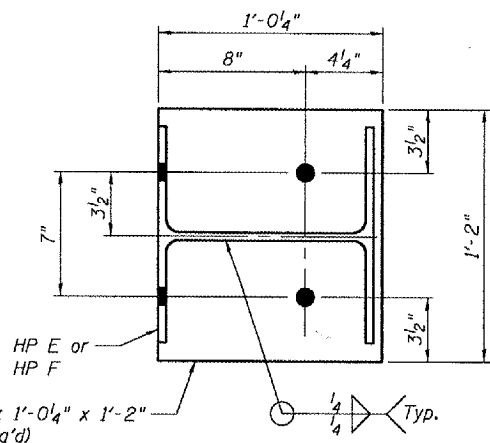
(Showing Interior Supports)



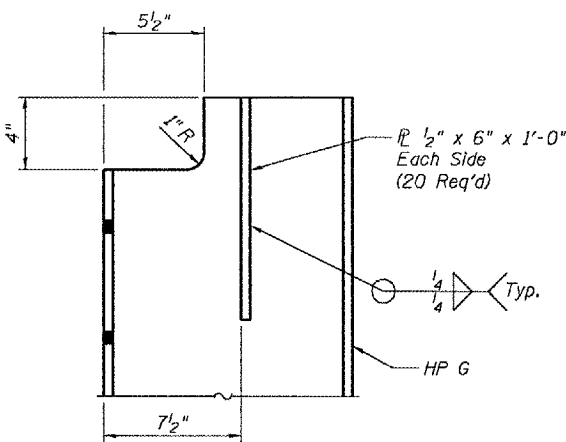
SECTION G-G



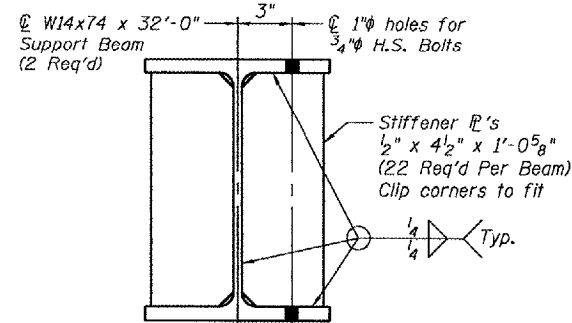
SECTION H-H



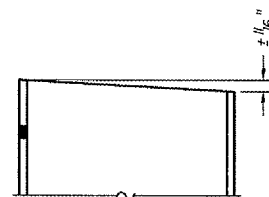
SECTION J-J



TYPICAL HP NOTCH DETAIL AT PIER



TYPICAL SUPPORT BEAM SECTION

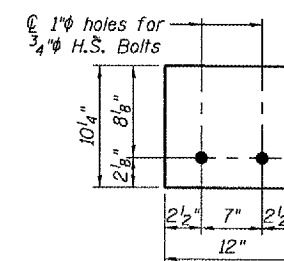


SLOPE CUT AT ABUTMENT

SHIM R THICKNESS

R 10 1/4" x 12" x 1

Deck Beam	Abutment	"
2	South	9/16"
3	North	1 1/8"
4	North	1 1/4"
6	North	2 1/2"
7	North	2 3/16"
8	North	1 1/4"
10	Both	9/16"



TYPICAL SHIM

DESIGNED	A.T.H.
CHECKED	V.H.V.
DRAWN	Drew Christopher
CHECKED	A.T.H. V.H.V.

August 30, 2007

EXAMINED *A. Carl Krusey*

PASSED *Ralph E. Anderson*

REPAIR PLANS UNIT CHIEF
ENGINEER OF BRIDGES AND STRUCTURES

SUPPORT DETAILS
F.A.P. RT. 608
MACOUPIN COUNTY
SN 059-0011