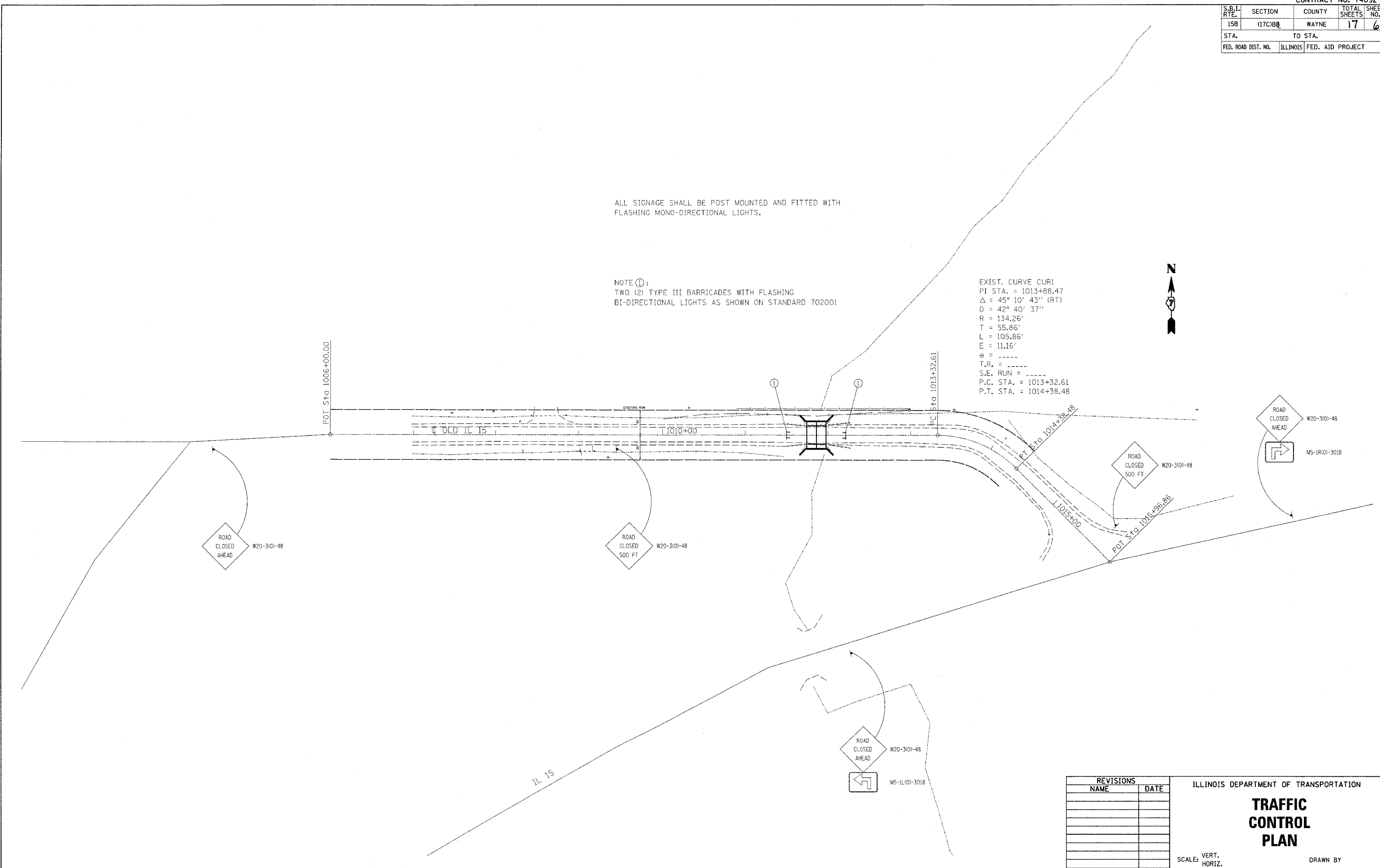


CONTRACT NO. 74092				
S.B.I. RTE.	SECTION	COUNTY	TOTAL SHEETS	SHEET NO.
15B	(17C)B@	WAYNE	17	6
STA.		TO STA.		
FED. ROAD DIST. NO.	ILLINOIS	FED. AID PROJECT		

ALL SIGNAGE SHALL BE POST MOUNTED AND FITTED WITH FLASHING MONO-DIRECTIONAL LIGHTS.

NOTE ①:
TWO (2) TYPE III BARRICADES WITH FLASHING BI-DIRECTIONAL LIGHTS AS SHOWN ON STANDARD 702001

EXIST. CURVE CUR1
PI STA. = 1013+88.47
 $\Delta = 45^\circ 10' 43''$ (RT)
D = 42° 40' 37"
R = 134.26'
T = 55.86'
L = 105.86'
E = 11.16'
e = -----
T.R. = -----
S.E. RUN = -----
P.C. STA. = 1013+32.61
P.T. STA. = 1014+38.48



PLOT DATE = 8/24/2007
FILE NAME = c:\pro\mca\74092\plan\trafcont.74092.dgn
PLOT SCALE = 56.8000' / 1" IN.
USER NAME = starfernk

REVISIONS	
NAME	DATE

ILLINOIS DEPARTMENT OF TRANSPORTATION

TRAFFIC CONTROL PLAN

SCALE: VERT. _____
HORIZ. _____

DATE _____

DRAWN BY _____
CHECKED BY _____