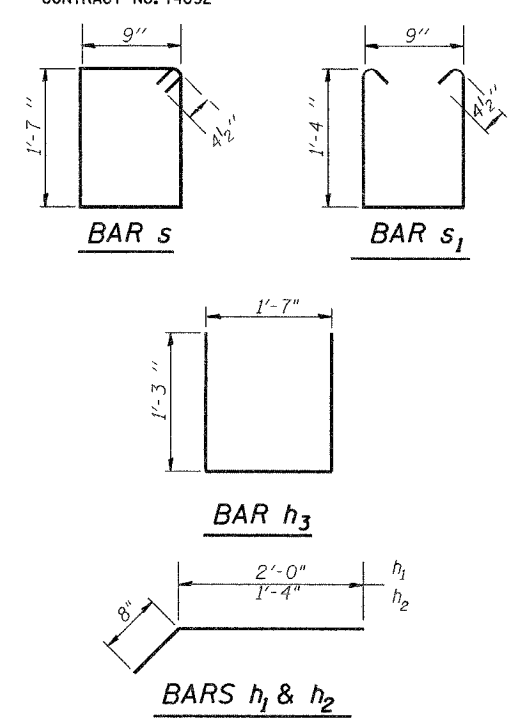
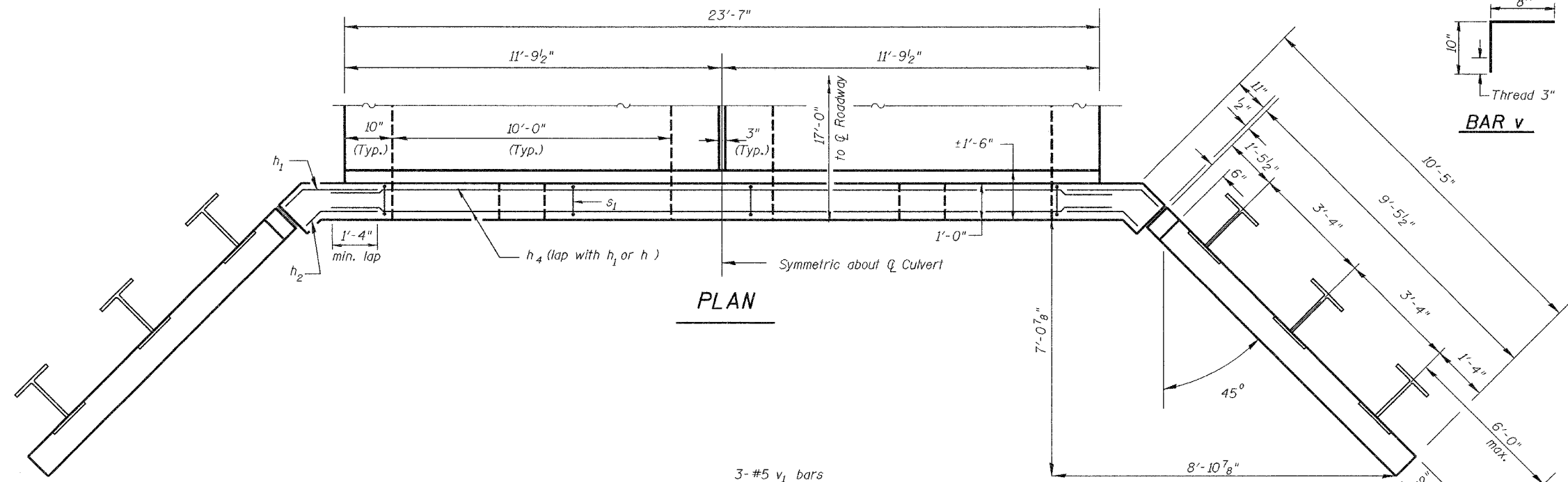


STATE OF ILLINOIS
DEPARTMENT OF TRANSPORTATION

ROUTE NO. SBI Rt. 15B	SECTION (17C)B	COUNTY WAYNE	SHEETS 17	SHEET 9	SHEET NO. 3 6 SHEET
FED. ROAD DIST. NO. 7		ILLINOIS	FED. AID PROJECT-		

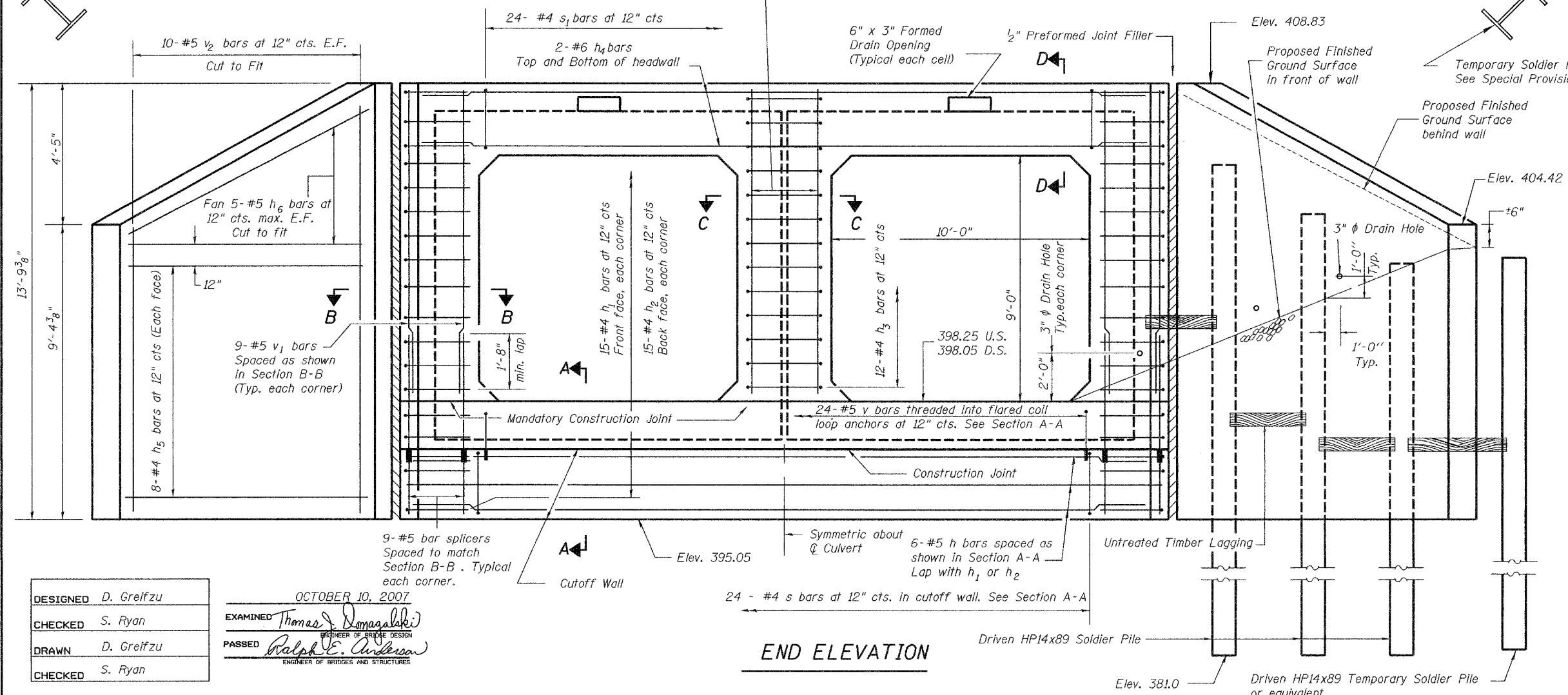
CONTRACT NO. 74092



BILL OF MATERIAL
For Information Only
(One End Section)

Bar	No.	Size	Length	Shape
h	6	#5	25'-0"	—
h1	30	#4	2'-8"	—
h2	30	#4	2'-0"	—
h3	12	#4	4'-1"	—
h4	4	#6	25'-0"	—
h5	32	#5	9'-1"	—
h6	20	#5	10'-6"	—
s	24	#4	5'-5"	—
s1	24	#4	4'-2"	—
v	24	#5	1'-6"	—
v1	21	#5	10'-3"	—
v2	40	#5	13'-5"	—

ITEM	UNIT	TOTAL
Furnishing Soldier Piles (HP Section)	Ft.	190
Driving Soldier Piles	Ft.	190
Untreated Timber Lagging	Sq. Ft.	282
Geocomposite Wall Drain	Sq. Yd.	11
Stud Shear Connectors	Each	60
Concrete Box Culverts	Cu. Yd.	17.4
Reinforcement Bars	Pound	1930
Bar Splicers	Each	18



DESIGNED	D. Greifzu
CHECKED	S. Ryan
DRAWN	D. Greifzu
CHECKED	S. Ryan

OCTOBER 10, 2007
EXAMINED *Thomas J. Domagalaki*
ENGINEER OF BRIDGE DESIGN
PASSED *Ralph E. Anderson*
ENGINEER OF BRIDGES AND STRUCTURES

BOX CULVERT END SECTION DETAILS
SBI ROUTE 15B - SECTION (17C)B
WAYNE COUNTY
STATION 1011+86.00
STRUCTURE NO. 096-2009