

F.A.S. RTE. 1669	SECTION	COUNTY COLES	TOTAL SHEETS 17	SHEET NO. 1
------------------------	---------	-----------------	-----------------------	-------------------

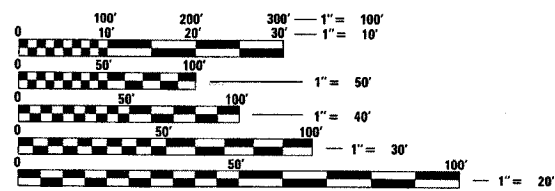
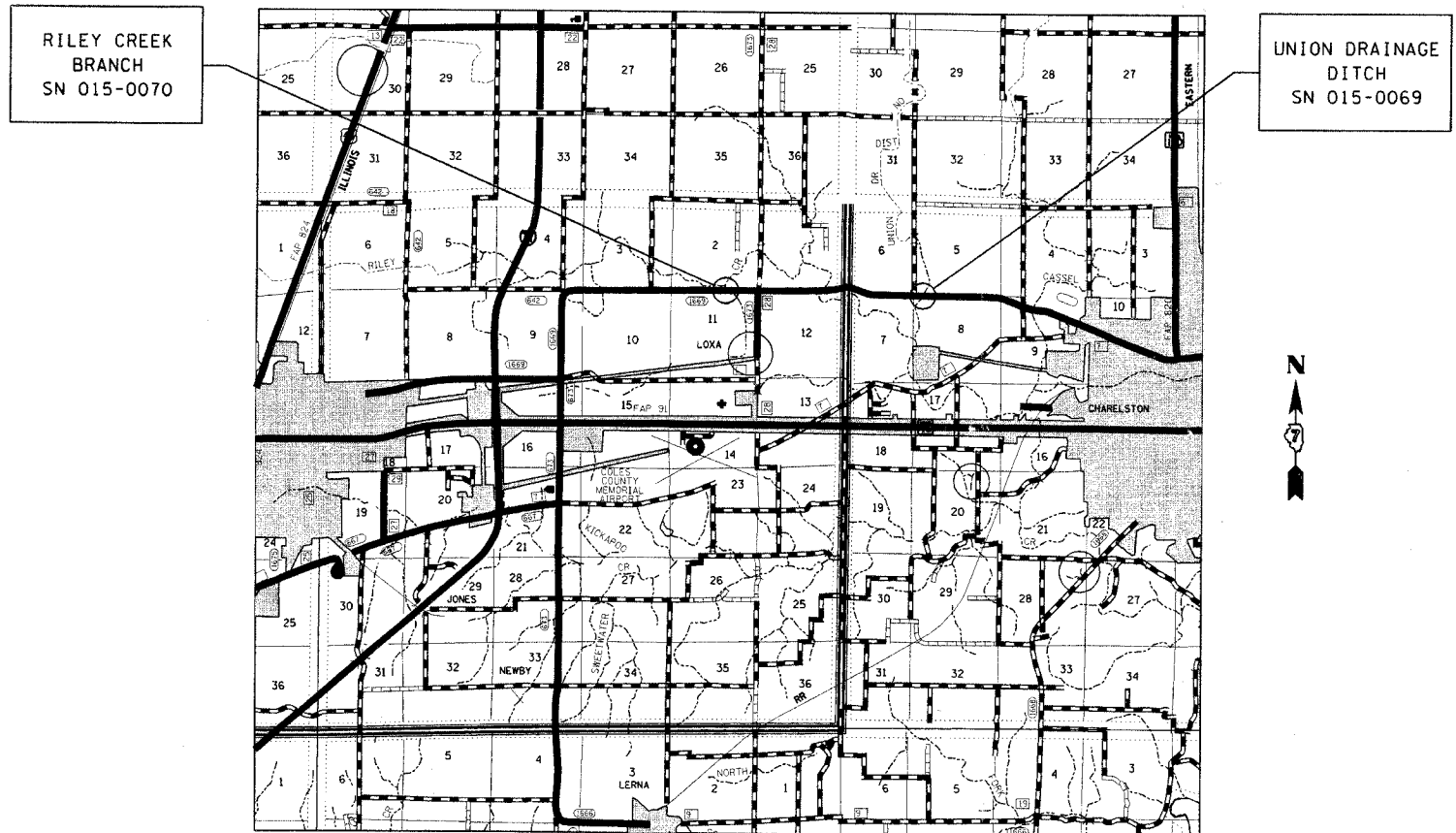
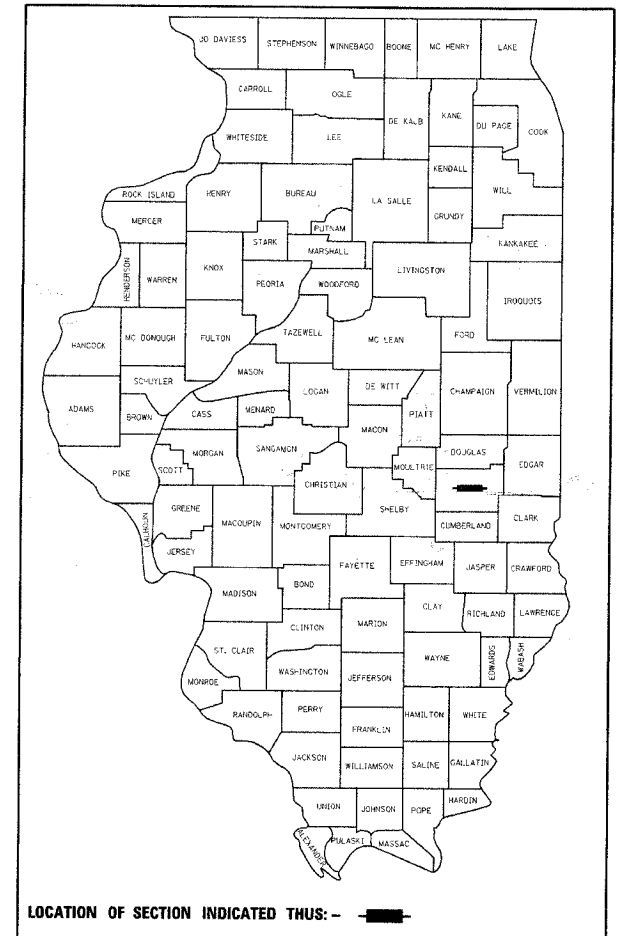
CONTRACT NO. 74267

STATE OF ILLINOIS
DEPARTMENT OF TRANSPORTATION
DIVISION OF HIGHWAYS

**PROPOSED
HIGHWAY PLANS**
FAS ROUTE 1669 (OLD RT IL 316)
D7 BRIDGE REPAIRS 2008-3
COLES COUNTY

C-97-100-07

FOR INDEX OF SHEETS, SEE SHEET NO. 2



FULL SIZE PLANS HAVE BEEN PREPARED USING STANDARD ENGINEERING SCALES. REDUCED SIZED PLANS WILL NOT CONFORM TO STANDARD SCALES. IN MAKING MEASUREMENTS ON REDUCED PLANS, THE ABOVE SCALES MAY BE USED.

J.U.L.I.E.
JOINT UTILITY LOCATION INFORMATION FOR EXCAVATION
1-800-892-0123

CONTRACT NO. 74267

015-0069 2004 ADT = 4050
015-0070 2004 ADT = 3250

GROSS LENGTH = 2.40 MILES
NET LENGTH = 0.20 MILES

STATE OF ILLINOIS
DEPARTMENT OF TRANSPORTATION
DIVISION OF HIGHWAYS

SUBMITTED August 29 20 07

Christina M. Reed
DEPUTY DIRECTOR OF HIGHWAYS, REGION ENGINEER

October 12, 2007
Eric E. Harsh
ENGINEER OF DESIGN AND ENVIRONMENT

October 12, 2007
Milton R. Sees, P.E.
DIRECTOR OF HIGHWAYS, CHIEF ENGINEER

PRINTED BY THE AUTHORITY
OF THE STATE OF ILLINOIS