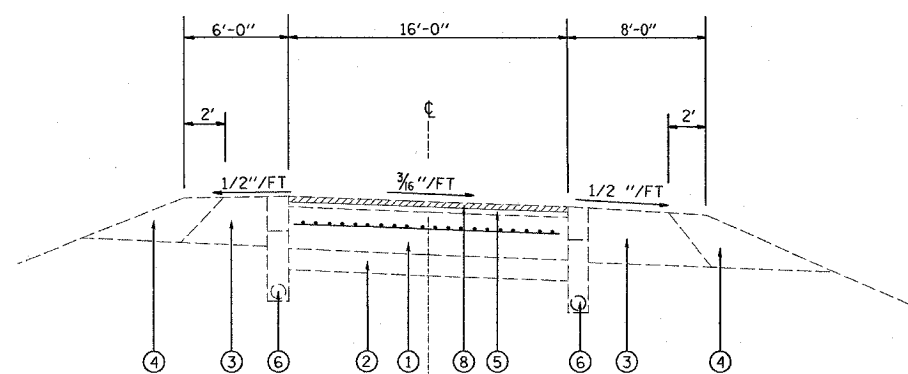
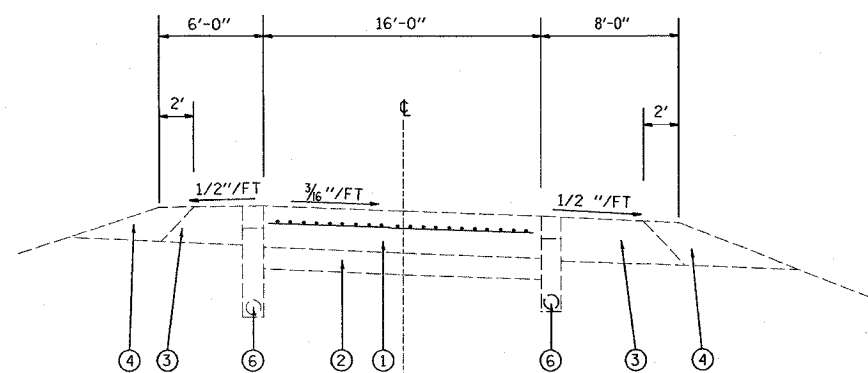


FILE NO.	SECTION	COUNTY	TOTAL SHEETS	SHEET NO.
64	95-(5,6)RS-1	WASHINGTON	83	9
SHEET NO.		TO STA.		
CONTRACT NO.: 76A38				



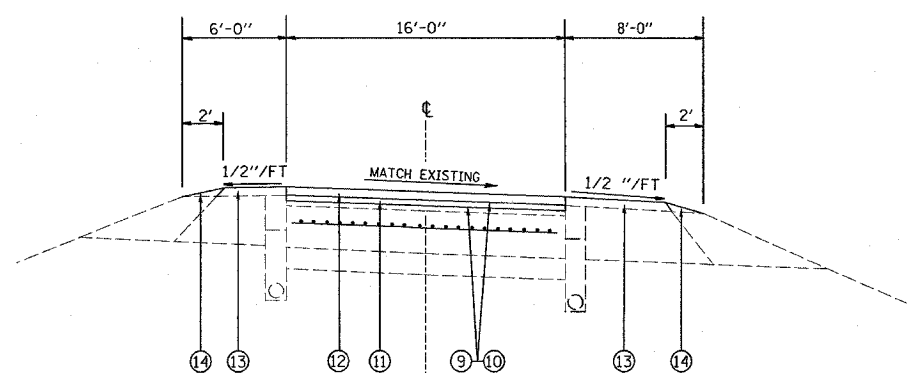
EXISTING TYPICAL SECTION RAMP

- RAMP 1 109+15 - 120+00
- RAMP 2 200+00 - 206+95
- RAMP 3 300+30 - 305+75
- RAMP 4 407+93 - 419+76



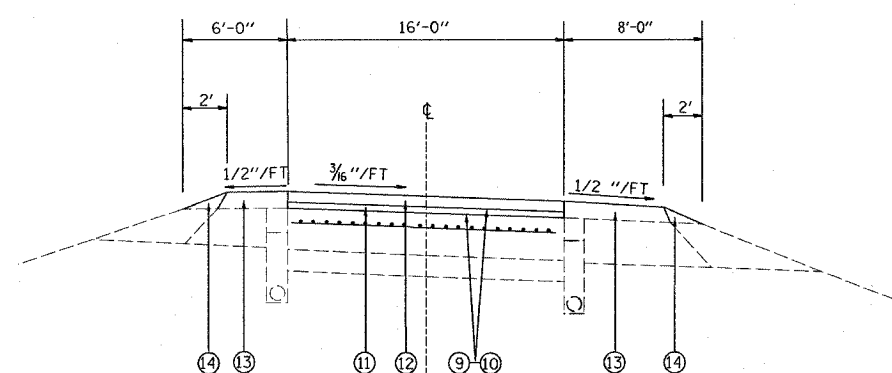
EXISTING TYPICAL RAMP SECTION

- RAMP 1 102+00 - 109+15
- RAMP 2 206+95 - 211+50
- RAMP 3 305+75 - 315+00
- RAMP 4 402+25 - 407+93



PROPOSED TYPICAL SECTION RAMP

- RAMP 1 109+15 - 120+79
- RAMP 2 200+00 - 206+95
- RAMP 3 300+30 - 305+75
- RAMP 4 407+93 - 419+76

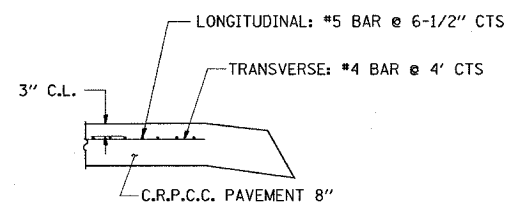


PROPOSED TYPICAL RAMP SECTION

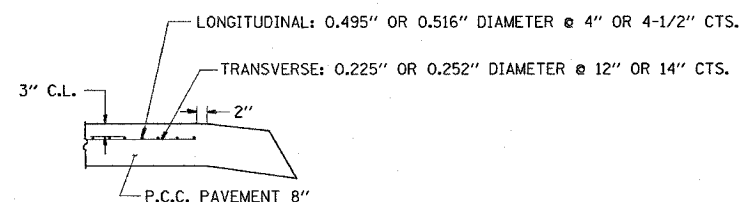
- RAMP 1 102+00 - 109+15
- RAMP 2 206+95 - 211+50
- RAMP 3 305+75 - 315+00
- RAMP 4 402+25 - 407+93

LEGEND

- ① EXISTING CONT. REINFORCED P.C.C. PAVEMENT 8"
- ② EXISTING STABILIZED SUB-BASE 4"
- ③ EXISTING STABILIZED SHOULDERS 11 1/4"
- ④ EXISTING AGGREGATE SHOULDER
- ⑤ EXISTING BITUMINOUS OVERLAY - 3 1/4"
- ⑥ EXISTING PIPE UNDERDRAIN
- ⑦ PROPOSED SHOULDER REMOVAL & REPLACEMENT 5"
- ⑧ PROPOSED HOT-MIX ASPHALT SURFACE REMOVAL 3/4"
- ⑨ PROPOSED BITUMINOUS MATERIALS (PRIME COAT)
- ⑩ PROPOSED AGGREGATE (PRIME COAT)
- ⑪ LEVELING BINDER COURSE (MACHINE METHOD) N105, 1"
- ⑫ PROPOSED HOT-MIX ASPHALT CONCRETE SURFACE COURSE, STONE MATRIX ASPHALT, 2"
- ⑬ PROPOSED HOT-MIX ASPHALT SHOULDERS
- ⑭ PROPOSED AGGREGATE WEDGE SHOULDER, TYPE B
- ⑮ PROPOSED PIPE UNDERDRAIN, 4"



DETAIL OF EXISTING PAVEMENT REINFORCEMENT



DETAIL OF EXISTING RAMP REINFORCEMENT

PLOT DATE = 8/24/2007
 PLOT NAME = 95-5,6RS-1.dwg
 PLOT SCALE = 1/8" = 1'-0"
 REFERENCE = REF

REVISIONS		ILLINOIS DEPARTMENT OF TRANSPORTATION TYPICAL RAMP SECTIONS FAI ROUTE 64 SECTION 95-(5,6)RS-1 WASHINGTON COUNTY
NAME	DATE	
		SCALE: VERT. _____ HORIZ. _____ DATE _____