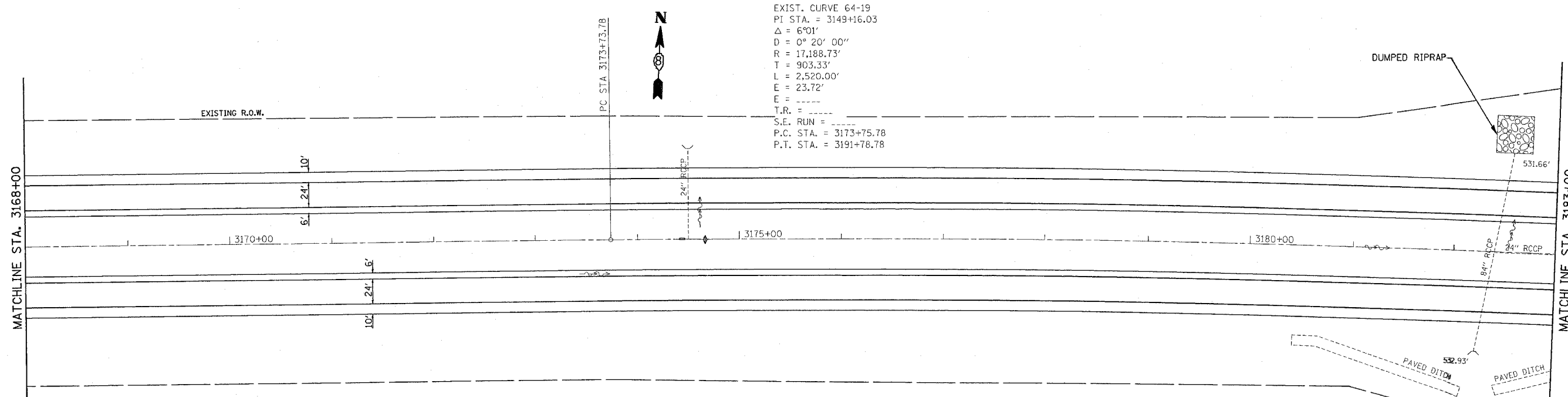
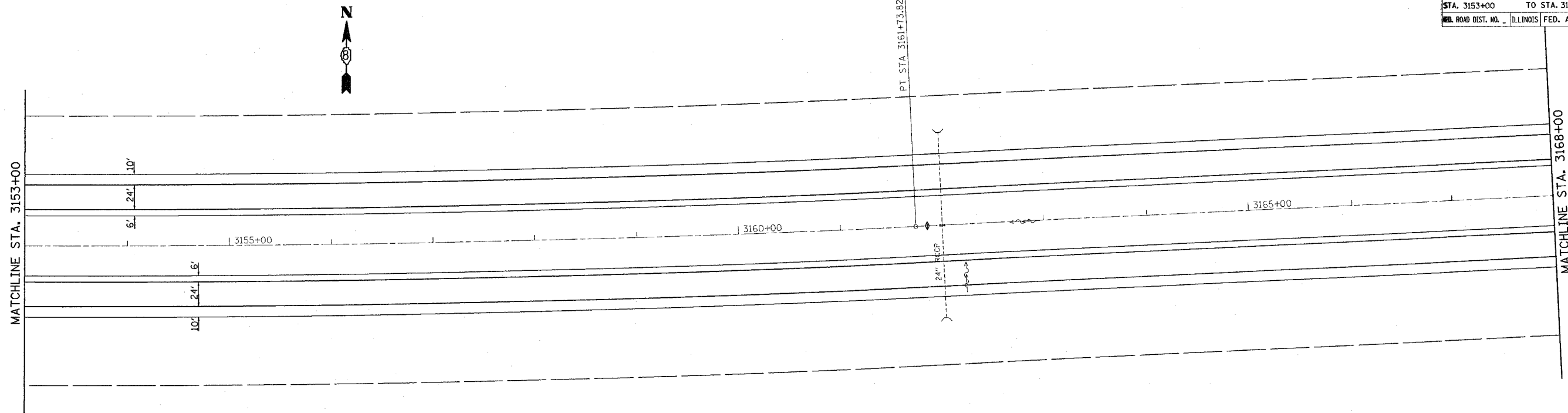
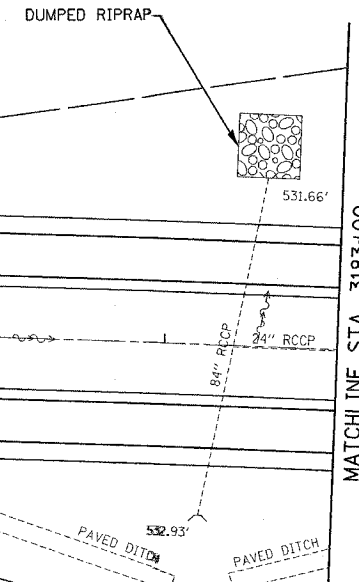


CONTRACT NO. 76A39				
FAI RTE.	SECTION	COUNTY	TOTAL SHEETS	SHEET NO.
64	95-(5,6)RS-1	WASHINGTON	83	24
STA. 3153+00		TO STA. 3183+00		
RD. ROAD DIST. NO.	ILLINOIS	FED. AID PROJECT		



EXIST. CURVE 64-19
 PI STA. = 3149+16.03
 $\Delta = 6^{\circ}01'$
 $D = 0^{\circ}20'00''$
 $R = 17,188.73'$
 $T = 903.33'$
 $L = 2,520.00'$
 $E = 23.72'$
 $F = \text{-----}$
 $T.R. = \text{-----}$
 $S.E. \text{ RUN} = \text{-----}$
 $P.C. \text{ STA.} = 3173+75.78$
 $P.T. \text{ STA.} = 3191+78.78$



REVISIONS	
NAME	DATE

ILLINOIS DEPARTMENT OF TRANSPORTATION
PLAN VIEW
 FAI RTE. 64
 SECTION 95-(5,6)RS-1
 WASHINGTON COUNTY

SCALE: VERT. _____
 HORIZ. _____

DATE _____ DRAWN BY _____
 CHECKED BY _____

PLOT DATE = 8/23/2007
 FILE NAME = c:\pwworkspace\101287\plan\101287b.dgn
 PLOT SCALE = 1/8" = 1' / IN.
 PREFERENCE = MREF