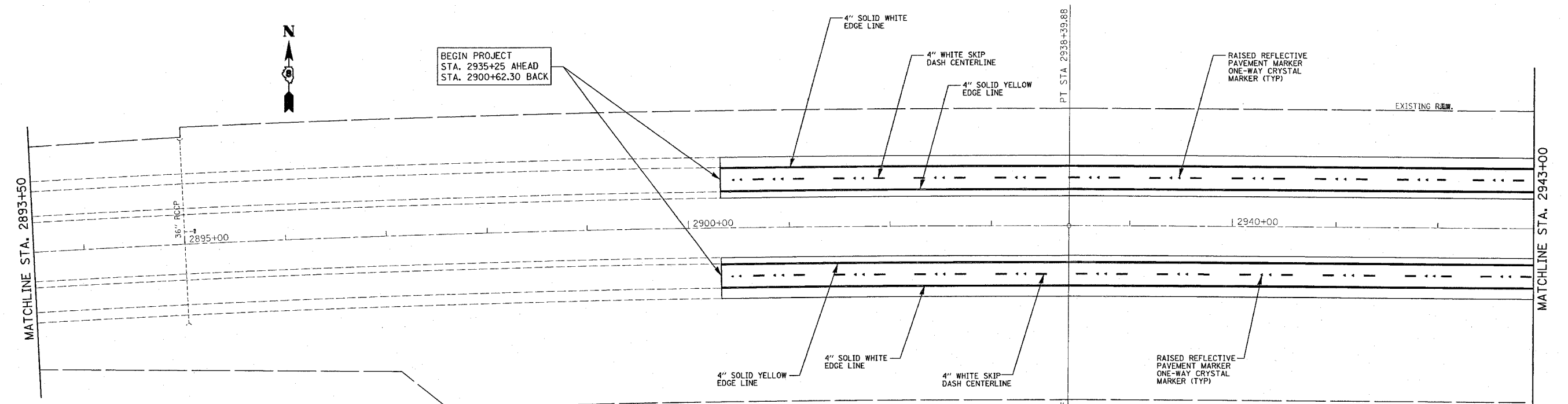
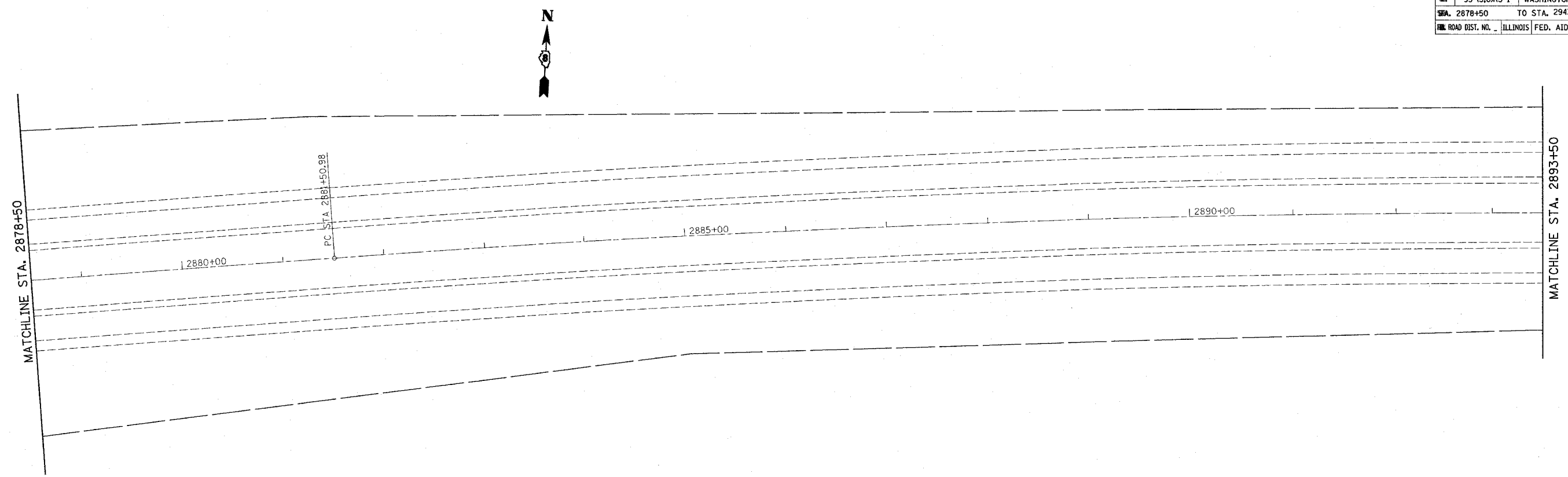


FAI DIST.	SECTION	COUNTY	TOTAL SHEETS	SHEET NO.
95	95-(5,6)RS-1	WASHINGTON	83	32
STA. 2878+50		TO STA. 2943+00		
ILLINOIS	FED. AID PROJECT			



PLOT DATE = 8/21/2007  
 FILE NAME = c:\projects\76a39\plan\pmark01207b.dgn  
 PLOT SCALE = 80.0000' / 1" IN.  
 REFERENCE = #REF#

REVISIONS	
NAME	DATE

ILLINOIS DEPARTMENT OF TRANSPORTATION  
**PAVEMENT MARKING SHEET**  
 FAI RTE. 64  
 SECTION 95-(5,6)RS-1  
 WASHINGTON COUNTY  
 SCALE: VERT. \_\_\_\_\_  
 HORIZ. \_\_\_\_\_  
 DATE \_\_\_\_\_  
 DRAWN BY \_\_\_\_\_  
 CHECKED BY \_\_\_\_\_