

ROUTE NO.	SECTION	COUNTY	TOTAL SHEETS	SHEET NO.	SHEET NO. 1
FAI 64	*	Washington	63	58	10 SHEETS
FED. ROAD DIST. NO. 7	ILLINOIS	FED. AID PROJECT-	Contract # *95-(5, 6) RS-1		

**GENERAL NOTES**

No field welding is permitted except as specified in the contract documents.

Reinforcement bars shall conform to the requirements of ASTM A 706 GR 60 (IL Modified). See Special Provisions.

Reinforcement bars designated (E) shall be epoxy coated.

Prior to pouring the new concrete deck, all heavy or loose rust, loose mill scale, and other loose or potentially detrimental foreign material shall be removed from the surfaces in contact with concrete. Tightly adhered paint may remain unless otherwise noted. Removal shall be accomplished by methods that will not damage the steel and the cost will be included in the pay item covering removal of the existing concrete.

As directed by the Engineer, existing construction accessories welded to the top flange of beams and girders shall be removed. The weld areas shall be ground flush and inspected for cracks using magnetic particle testing (MT) or dye penetrant testing (PT) by an individual acceptable to the Engineer. Any cracks that can not be removed by grinding 1/4 in. deep shall be identified and reported to the Bureau of Bridges and Structures for further disposition. The cost of removing welded accessories, grinding and inspecting weld areas and grinding cracks will be paid for according to Article 109.04 of the Standard Specifications.

Plan dimensions and details relative to existing plans are subject to routine variations. The Contractor shall field verify existing dimensions and details affecting new construction and make necessary approved adjustments prior to construction or ordering of materials. Such variations shall not be cause for additional compensation for a change in scope of the work, however, the Contractor will be paid for the quantity actually furnished based upon the unit price bid for the work.

Concrete Sealer shall be applied to the deck surface, parapet faces and abutment seats.

Cleaning and field painting of structural steel shall be done under a separate painting contract.

The existing structural steel coating contains lead. The Contractor shall take appropriate precautions to deal with the presence of lead on this project.

The existing abutment seats shall be cleaned according to the Special Provisions and paid for at the contract unit price for "Cleaning Bridge Seats".

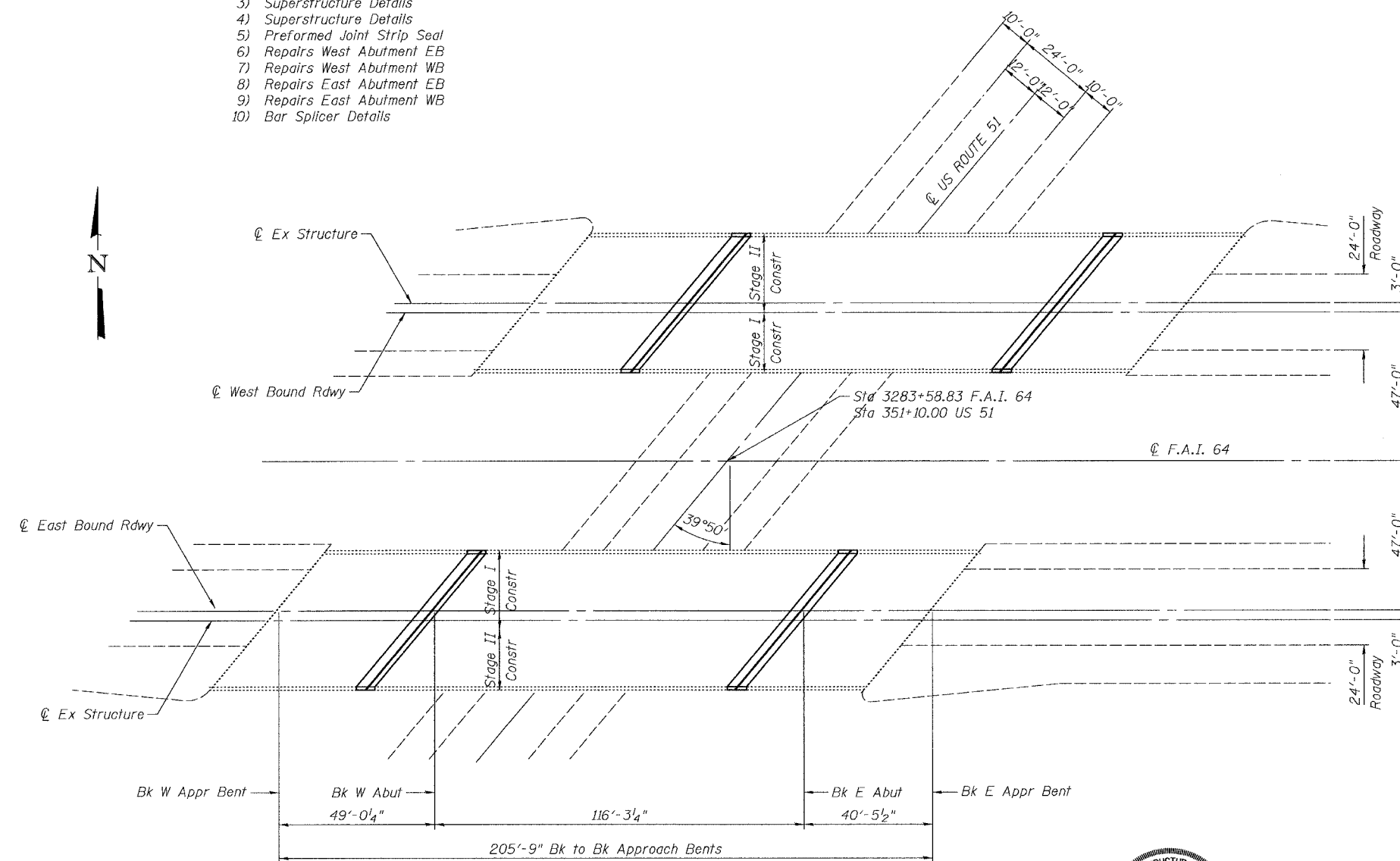
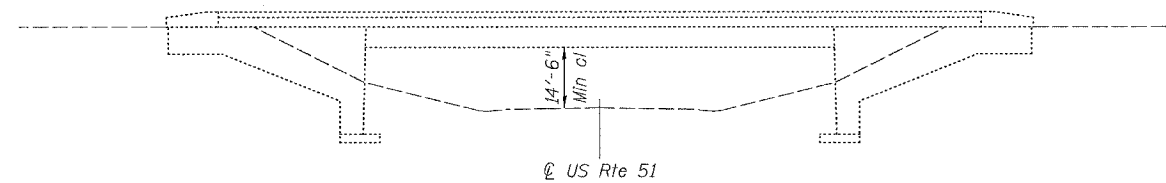
**TOTAL BILL OF MATERIAL**

ITEM	UNIT	SUPER	SUB	TOTAL
Stone Riprap Class A3	Sq Yd		12	12
Filter Fabric	Sq Yd		12	12
Concrete Removal	Cu Yd	68.7		68.7
Concrete Superstructure	Cu Yd	68.7		68.7
Bridge Deck Grooving	Sq Yd	101		101
Reinforcement Bars, Epoxy Coated	Pound	6470		6470
Bar Splicers	Each	68		68
Preformed Joint Strip Seal	Foot	219		219
Concrete Sealer	Sq Ft	19602		19602
Epoxy Crack Injection	Foot		10	10
Structural Repair of Concrete (Depth Equal to or Less Than 5")	Sq Ft		154	154
Cleaning Bridge Seats	Sq Ft	563		563

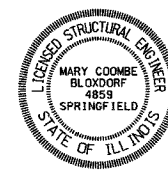
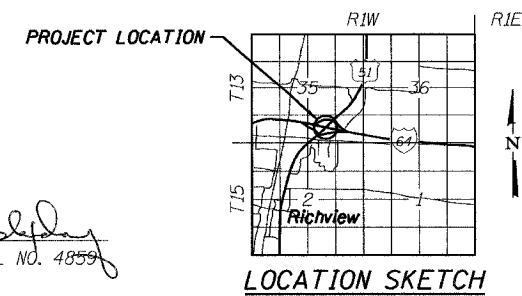
**INDEX OF SHEETS**

- 1) General Plan
- 2) Stage Construction and Concrete Removal
- 3) Superstructure Details
- 4) Superstructure Details
- 5) Preformed Joint Strip Seal
- 6) Repairs West Abutment EB
- 7) Repairs West Abutment WB
- 8) Repairs East Abutment EB
- 9) Repairs East Abutment WB
- 10) Bar Splicer Details

**ELEVATION**



**PLAN**



*Mary Coombe Bloxdorf*  
 ILLINOIS STRUCTURAL NO. 4859  
 EXPIRES 11/30/08  
 DATE: 8/22/07

ILLINOIS DEPARTMENT OF TRANSPORTATION

SHEET TITLE: GENERAL PLAN AND ELEVATION

PROJECT: F.A.I. 64 OVER US ROUTE 51  
 SECTION 95-(5, 6) RS-1  
 WASHINGTON COUNTY  
 STATION 3283+58.83  
 SN 095-0063 (E.B.) & 095-0064 (W.B.)

SCALE: 1" = 40'-0"

DATE: 8/21/07  
 DRAWN BY: CFC  
 CHECKED BY: MCB

**COOMBE-BLOXDORF P.C.**  
 Engineers / Land Surveyors  
 Springfield, Illinois  
 Design Firm License No. 184-002703

PROJECT NO. 06001-6  
 DRAWING NO. 1  
 OF 10 SHTS

PLOT DATE = 08/21/2007  
 FILE NAME = \\p01\p01\cadd\001-general-plan.dgn  
 PLOT SCALE = 1" = 40'-0"  
 USER NAME = TFC