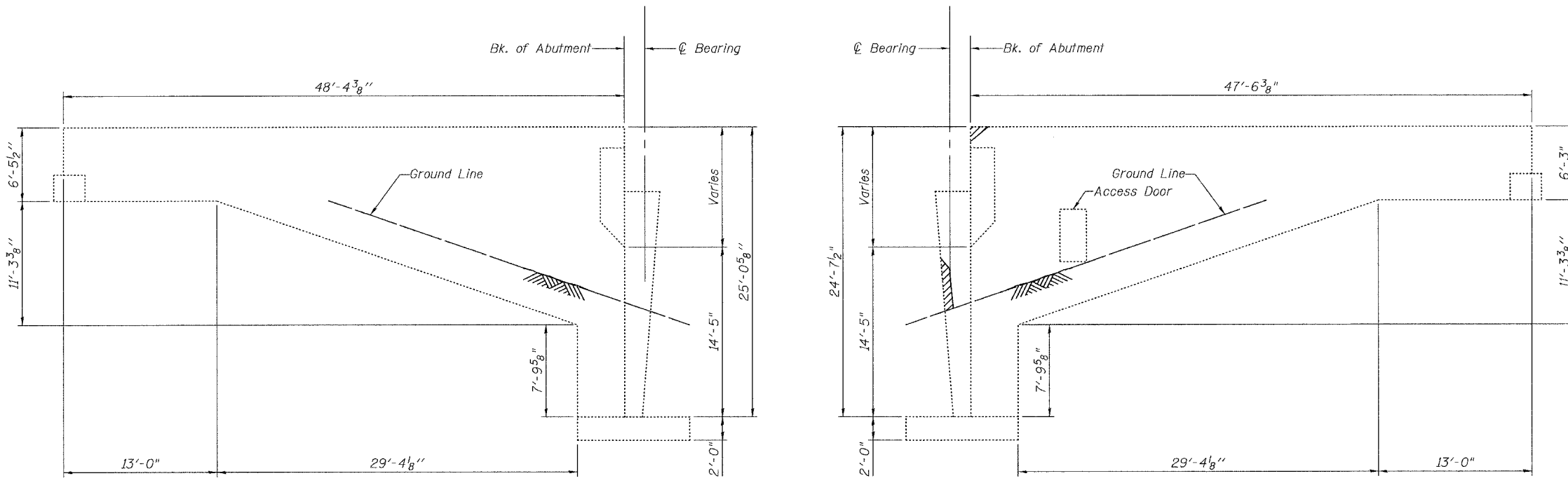


**WEST ABUTMENT**  
(Facing West)




**SOUTH CURTAIN WALL ELEVATION**  
(Facing North)

**NORTH CURTAIN WALL ELEVATION**  
(Facing South)

**BILL OF MATERIALS**

Structural Repair of Concrete (Depth Equal to or Less Than 5')	Sq. Ft.	26

**LEGEND**

 Denotes Structural Repair of Concrete (Depth Equal to or Less Than 5')

PLOT DATE = 08/21/2007  
PLOT SCALE = 5/8" = 1'-0"  
USER NAME = TFC

ILLINOIS DEPARTMENT OF TRANSPORTATION		
SHEET TITLE REPAIRS WEST ABUTMENT EB		
PROJECT FAI RTE 64 OVER US RTE 51 FAI RTE 64 SECTION 95-(5,6)RS-1 WASHINGTON COUNTY STATION 3283+58.83 SN 095-0063 (EB) & 095-0064 (WB)	PROJECT NO. 06001-6	DATE 8/21/07
ENGINEER COOMBE-BLOXDORF P.C. Engineers / Land Surveyors Springfield, Illinois Design Firm License No. 184-002703	DRAWN BY KPS/BD/MCB	CHECKED BY TFC
		DRAWING NO. 6 OF 10 SHTS