

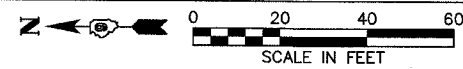


PLAN	SUBMITTED	DATE
	PLOTTED	
	NOTED	
	CHECKED	
	BY	
	DATE	

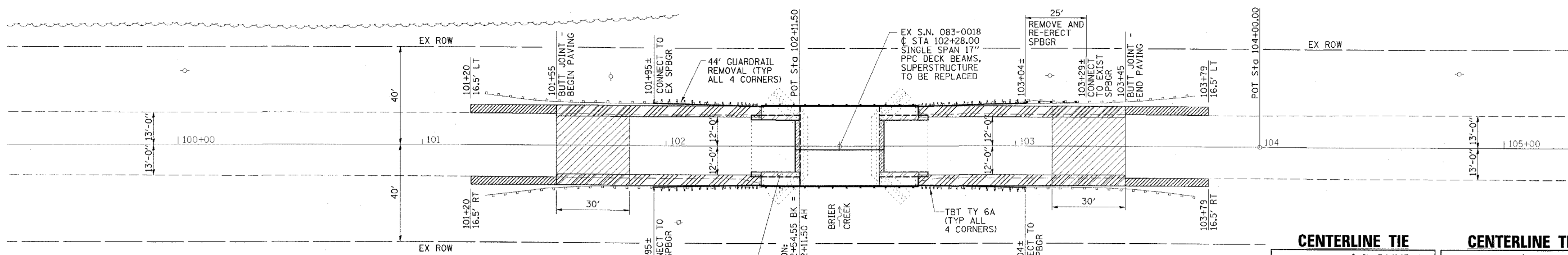
PROFILE	SUBMITTED	DATE
	PLOTTED	
	NOTED	
	CHECKED	
	BY	
	DATE	

PLOT DATE = #DATE#  
 FILE NAME = #FILE#  
 PLOT SCALE = #SCALE#  
 REFERENCE = #REF#

SEC. 34, T9S, R6E, 3RD P.M.



CONTRACT NO. 78010			
FAP RTE	SECTION	COUNTY	TOTAL SHEET NO.
132	1BR-1	SALINE	114
STA. 99+50		TO STA. 105+00	
FED. ROAD DIST. NO.		ILLINOIS FED. AID PROJECT	



**LEGEND**

- HMA SHOULDER
- HMA SURF REMOVAL, SPECIAL
- HMA SURF REMOVAL - BUTT JOINT
- APPROACH SLAB REMOVAL
- BASE COURSE WIDENING

4.5 SQ YD APPROACH SLAB REMOVAL (TYP ALL 4 CORNERS)

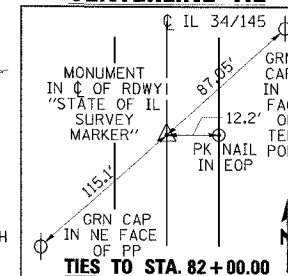
EQUATION: STA 102+54.55 BK = STA 102+11.50 AH

SEC. 34, T9S, R6E, 3RD P.M.

**BENCHMARK**

SAWED SQUARE SE CORNER OF SN 083-0018 ON EXPOSED APPROACH SLAB, STATION 102+60, 16.1' LEFT ELEVATION 366.25

**CENTERLINE TIE**



**CENTERLINE TIE**

