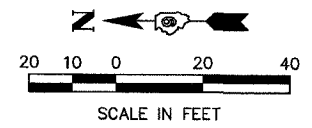
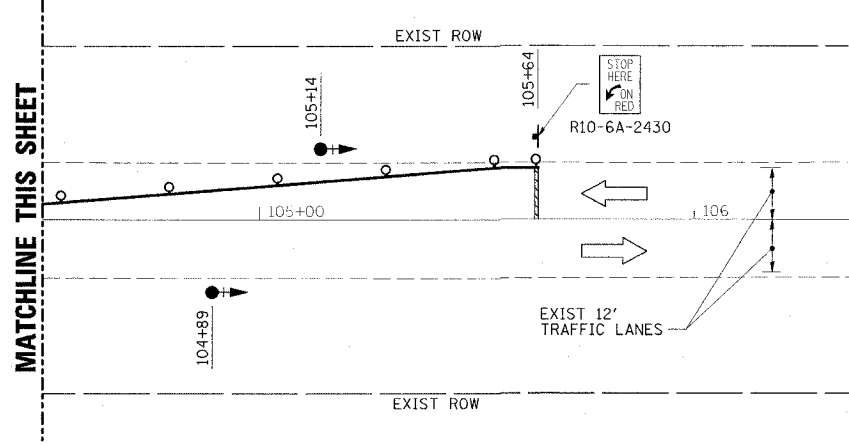
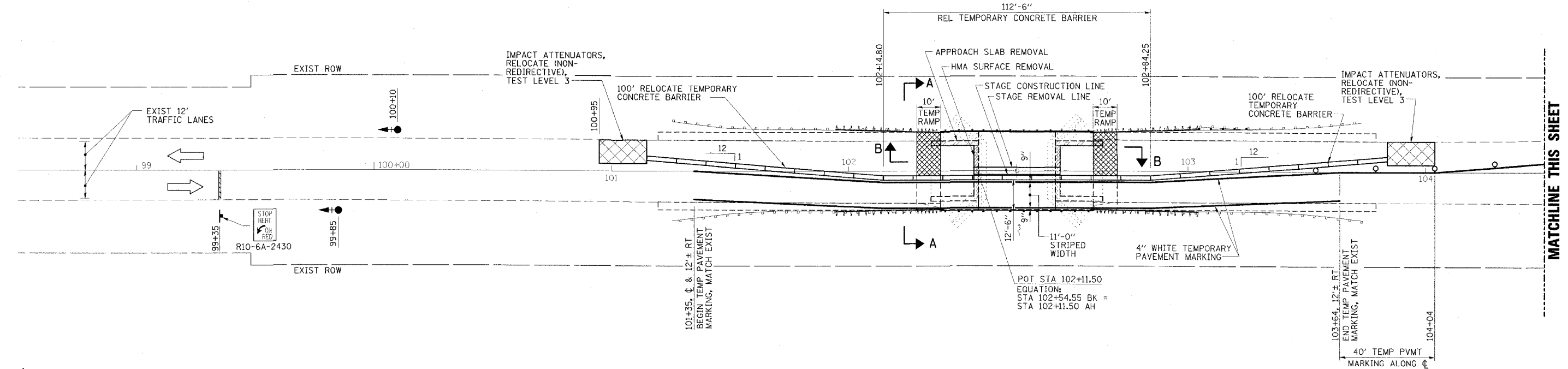


CONTRACT NO. 78010			
FAP RTE	SECTION	COUNTY	TOTAL SHEET NO.
132	1BR-1	SALINE	114 13
STA. 99+35		TO STA. 105+64	
FED. ROAD DIST. NO.	ILLINOIS	FED. AID PROJECT	



- LEGEND**
- TRAFFIC SIGNAL WITH BACKPLATE SIGNAL DIRECTION INDICATED
  - TEMPORARY RAMP
  - HMA SURFACE REMOVAL, SPECIAL
  - APPROACH SLAB REMOVAL

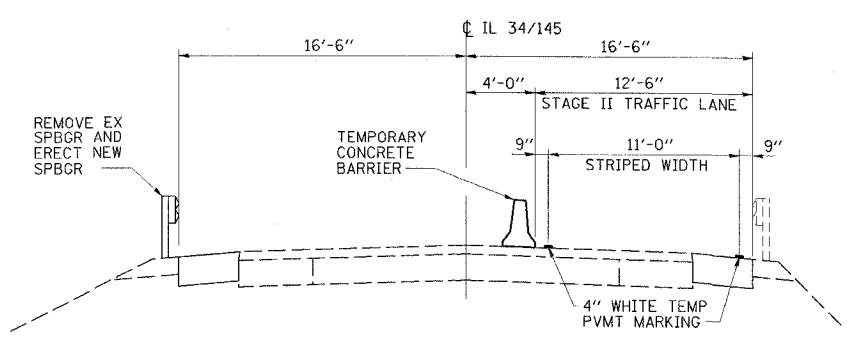
**SCHEDULE OF QUANTITIES**

RELOCATE TEMPORARY CONCRETE BARRIER	STATION TO	STATION	FEET
	101+15	103+84	312.5
<b>TOTAL</b>			<b>312.5</b>

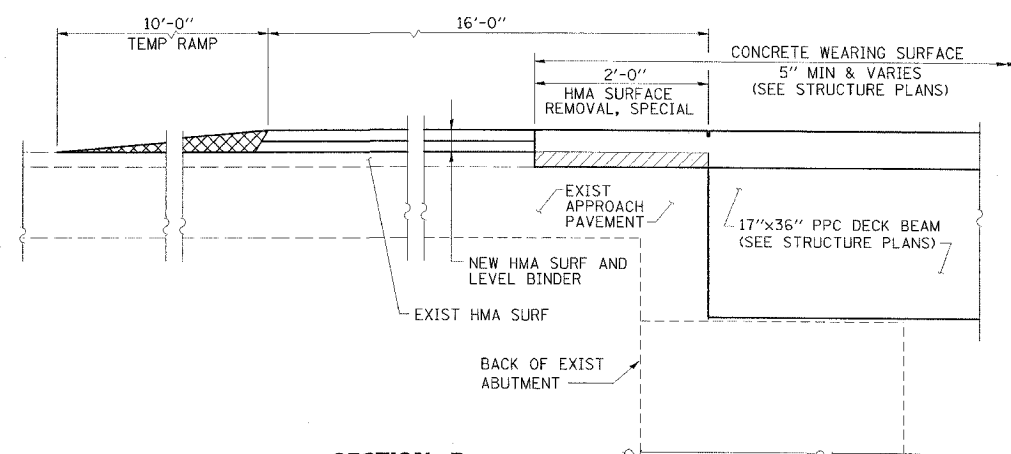
IMPACT ATTENUATORS, RELOCATE (NON-REDIRECTIVE), TEST LEVEL 3 - 2 EACH

**GENERAL NOTES**

1. TRAFFIC CONTROL SHALL BE ERECTED AS SHOWN AND ACCORDING TO "TRAFFIC CONTROL AND PROTECTION, STANDARD 701321."
2. SEE SPECIAL PROVISIONS FOR ADDITIONAL TRAFFIC CONTROL REQUIREMENTS.
3. COORDINATE LOCATION OF SIGNALS WITH FINAL WORK AS DIRECTED BY THE ENGINEER.
4. CONSTRUCT TEMPORARY RUMBLE STRIPS AT LOCATIONS SHOWN ON STANDARD 701321.



**SECTION A-A**



**SECTION B**

**STAGE II CONSTRUCTION**  
**IL 34/145 OVER BRIER CREEK**  
**FAP ROUTE 132 - SECTION 1BR-1**  
**SALINE COUNTY**  
**STATION 102+28.00**  
**STRUCTURE NO. 083-0018**

**ESCA**  
CONSULTANTS, INC.

DESIGNED BY:	JMS/MTD	05/07
DRAWN BY:	cj	05/07
CHECKED BY:	MTD	06/07
APPROVED BY:	RDP	06/07