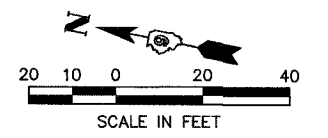
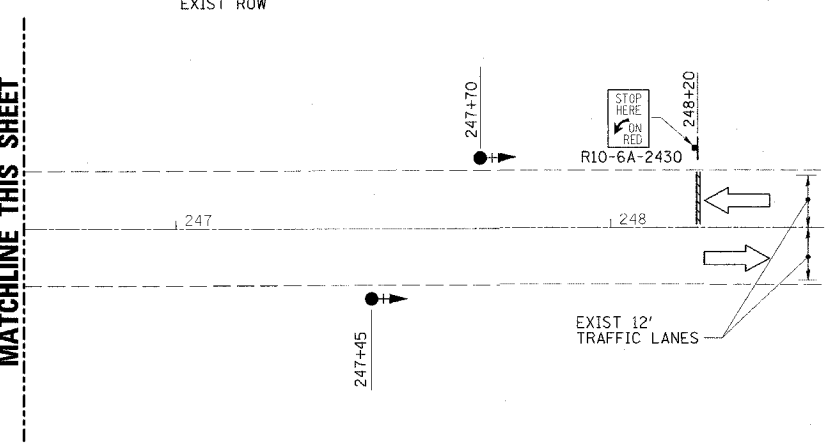
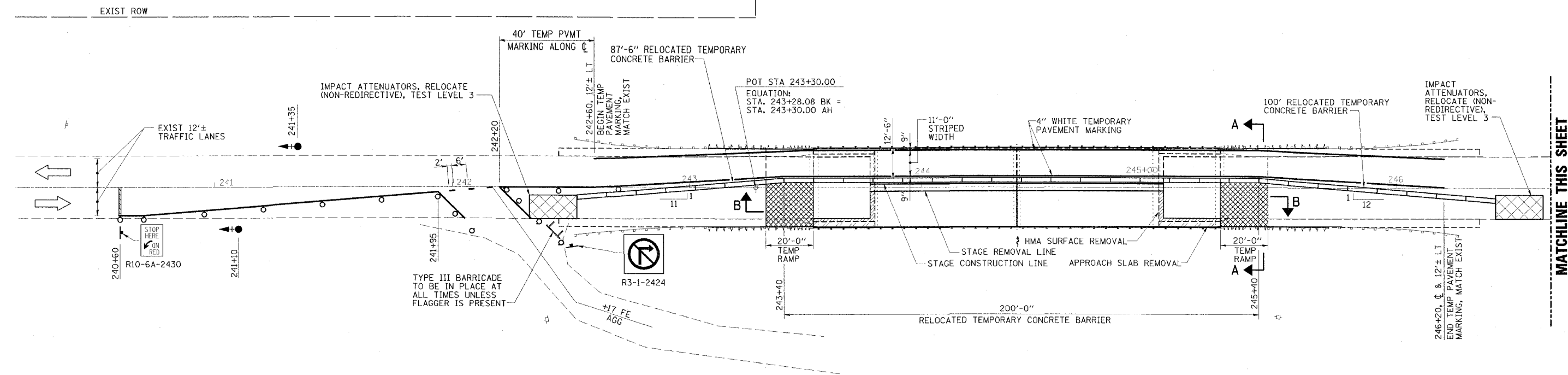




CONTRACT NO. 78010			
FAP RTE	SECTION	COUNTY	TOTAL SHEET NO.
132	IBR-3	SALINE	114 17
STA. 240+00		TO STA. 248+00	
FED. ROAD DIST. NO.	ILLINOIS	FED. AID PROJECT	



- LEGEND**
- TRAFFIC SIGNAL WITH BACKPLATE SIGNAL DIRECTION INDICATED
 - TEMPORARY RAMP
 - HMA SURFACE REMOVAL, SPECIAL
 - APPROACH SLAB REMOVAL

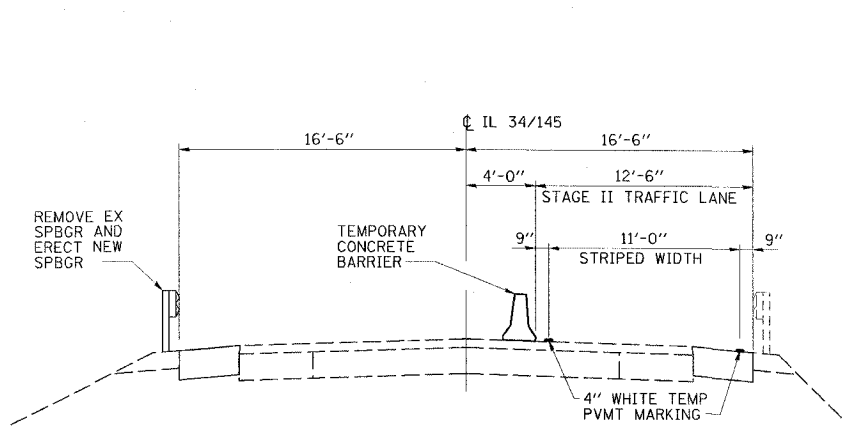
SCHEDULE OF QUANTITIES

RELOCATE TEMPORARY CONCRETE BARRIER	STATION TO	STATION	FEET
	242+51	246+40	387.5
		TOTAL	387.5

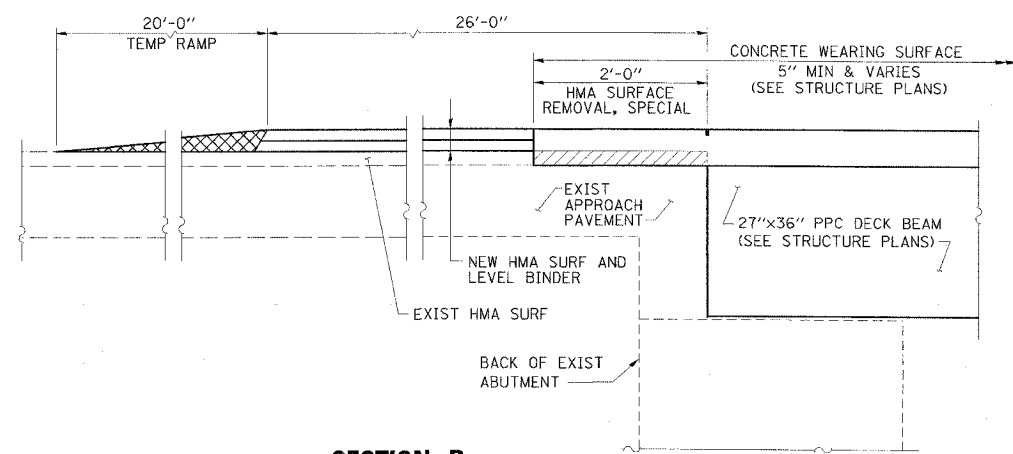
IMPACT ATTENUATORS, RELOCATE (NON-REDIRECTIVE), TEST LEVEL 3 - 1 EACH

GENERAL NOTES

1. TRAFFIC CONTROL SHALL BE ERECTED AS SHOWN AND ACCORDING TO "TRAFFIC CONTROL AND PROTECTION, STANDARD 701321."
2. SEE SPECIAL PROVISIONS FOR ADDITIONAL TRAFFIC CONTROL REQUIREMENTS.
3. COORDINATE LOCATION OF SIGNALS WITH FINAL WORK AS DIRECTED BY THE ENGINEER.
4. CONSTRUCT TEMPORARY RUMBLE STRIPS AT LOCATIONS SHOWN ON STANDARD 701321.



SECTION A-A



SECTION B-B

STAGE II CONSTRUCTION
IL 34/145 OVER SOUTH FORK
SALINE RIVER OVERFLOW
FAP ROUTE 132 - SECTION 1BR-3
SALINE COUNTY
STATION 244+40.00
STRUCTURE NO. 083-0020

ESCA
CONSULTANTS, INC.

DESIGNED BY:	JMS/MTD	05/07
DRAWN BY:	cj	05/07
CHECKED BY:	MTD	06/07
APPROVED BY:	RDP	06/07

MATCHLINE THIS SHEET

MATCHLINE THIS SHEET