

BENCHMARK: Sawed square in SE corner of SN 083-0018 on exposed approach slab, Station 102+60, 16.1' left, Elevation 366.25.

EXISTING STRUCTURE: SN 083-0018 was originally built in 1925 as S.B.I. Rte. 34, Section 1B. The superstructure was replaced in 1977 and precast concrete bridge slabs were utilized to widen the approaches. The superstructure consists of one simple span, 17" PPC deck beams. The substructure consists of two reinforced concrete closed abutments on timber piles. The back-to-back abutments length is 33'-0", the out-to-out width is 33'-0". The existing superstructure and the existing approach shoulder bridge slabs shall be removed and replaced utilizing stage construction.

No salvage.

STATION 102+28.00
REBUILT 20__ BY
STATE OF ILLINOIS
F.A.P. RT. 132 SEC. 1BR-1
LOADING HS20
STR. NO. 083-0018

NAME PLATE

See Std. 515001

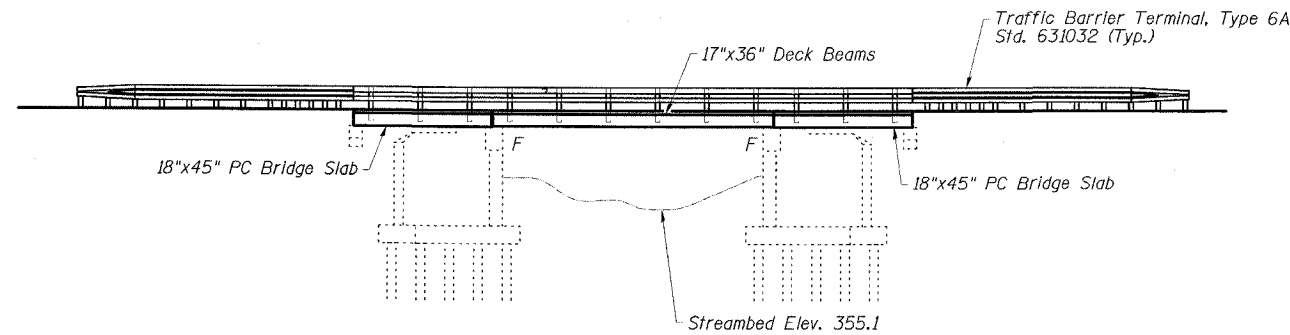
Note:
Existing Name Plate shall be cleaned and relocated adjacent to the new plate. Cost included with Name Plates.

STATE OF ILLINOIS
DEPARTMENT OF TRANSPORTATION

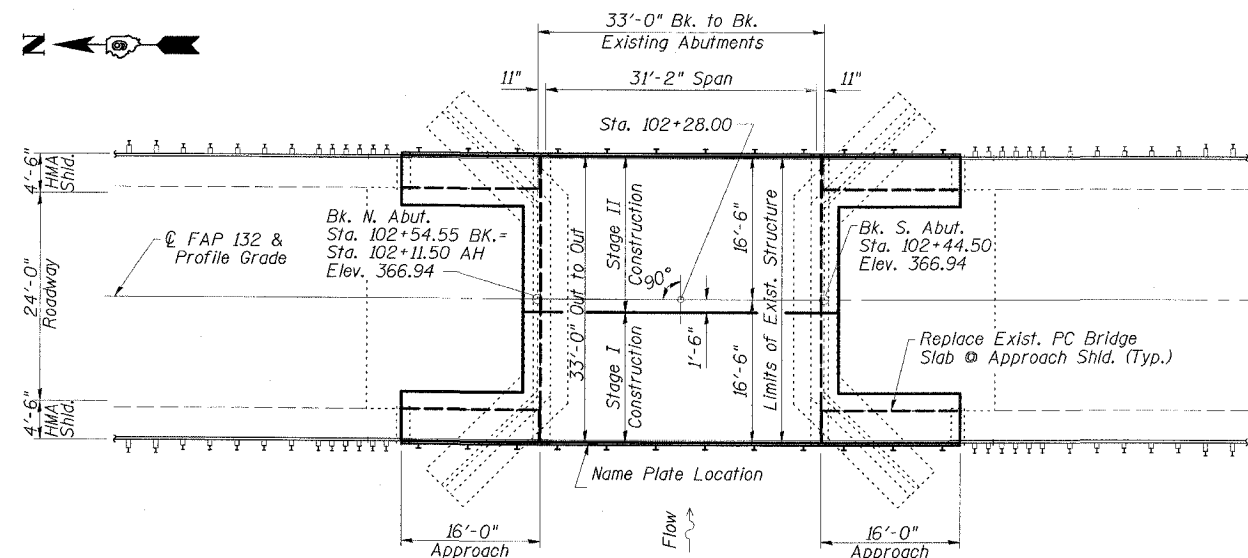
ROUTE NO.	SECTION	COUNTY	SHEET	SHEET NO.
FAP 132	1BR-1	SALINE	114	23
FED. ROAD DIST. NO.		ILLINOIS	FED. AID PROJECT	
78010				

STRUCTURE INDEX OF SHEETS

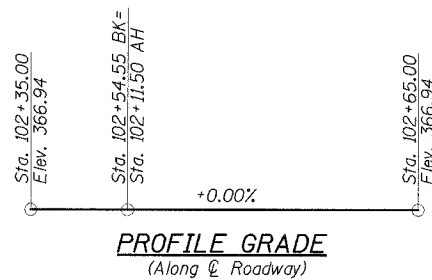
General Plan	Dwg. No. 1 of 13
General Data	Dwg. No. 2 of 13
Stage Construction Details	Dwg. No. 3 of 13
Temporary Concrete Barrier	Dwg. No. 4 of 13
Superstructure	Dwg. No. 5 of 13
Superstructure Details	Dwg. No. 6 of 13
Approach Details	Dwg. No. 7 of 13
Superstructure and Approach Details	Dwg. No. 8 of 13
Steel Railing, Type SM	Dwg. No. 9 of 13
North Abutment	Dwg. No. 10 of 13
South Abutment	Dwg. No. 11 of 13
Abutment Details	Dwg. No. 12 of 13
Bar Splicer Assembly Details	Dwg. No. 13 of 13



ELEVATION



PLAN



PROFILE GRADE
(Along \hat{c} Roadway)

APPROVED
FOR STRUCTURAL ADEQUACY ONLY

Ralph E. Anderson (Jr.)
ENGINEER OF BRIDGES AND STRUCTURES



EXPIRES 11-30-08
Ralph E. Anderson
SIGNATURE
8/02/07
DATE

DESIGN SPECIFICATION

2002 AASHTO

LOADING HS20-44

No Allowance for future wearing surface

DESIGN STRESSES

FIELD UNITS

$f'_c = 5,000$ psi (Concrete Wearing Surface)
 $f'_c = 3,500$ psi (All concrete except CWS)
 $f_y = 60,000$ psi (reinf.)

PRECAST PRESTRESSED UNITS

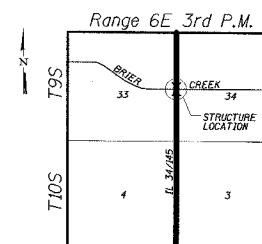
$f'_c = 5,000$ psi
 $f'_{ci} = 4,000$ psi
 $f'_s = 270,000$ psi ($1/2$ " low lax strands)
 $f_{si} = 201,960$ psi ($1/2$ " low lax strands)

PRECAST UNITS

$f'_c = 4,500$ psi
 $f_y = 60,000$ psi (reinf.)

SCOPE OF WORK

1. Remove existing surfacing, steel railing, deck beams, and approach shoulder bridge slabs.
2. Repair beam bearing seats and perform other repairs at abutments as required.
3. Reconstruct a single-span PPCD beam superstructure with Concrete Wearing Surface and Steel Railing, Type SM. Reconstruct existing approach shoulders with Precast Concrete Bridge Slabs with Concrete Wearing Surface.



LOCATION SKETCH

GENERAL PLAN
IL 34/145 OVER BRIER CREEK
FAP ROUTE 132 - SECTION 1BR-1
SALINE COUNTY
STATION 102+28.00
STRUCTURE NO. 083-0018

ESCA
CONSULTANTS, INC.

DESIGNED BY:	JMS	05/07
DRAWN BY:	HAS	05/07
CHECKED BY:	MTD	06/07
APPROVED BY:	RDP	06/07