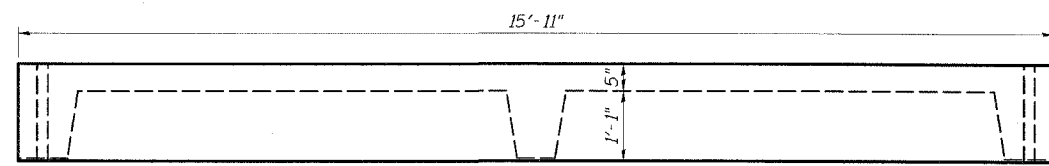


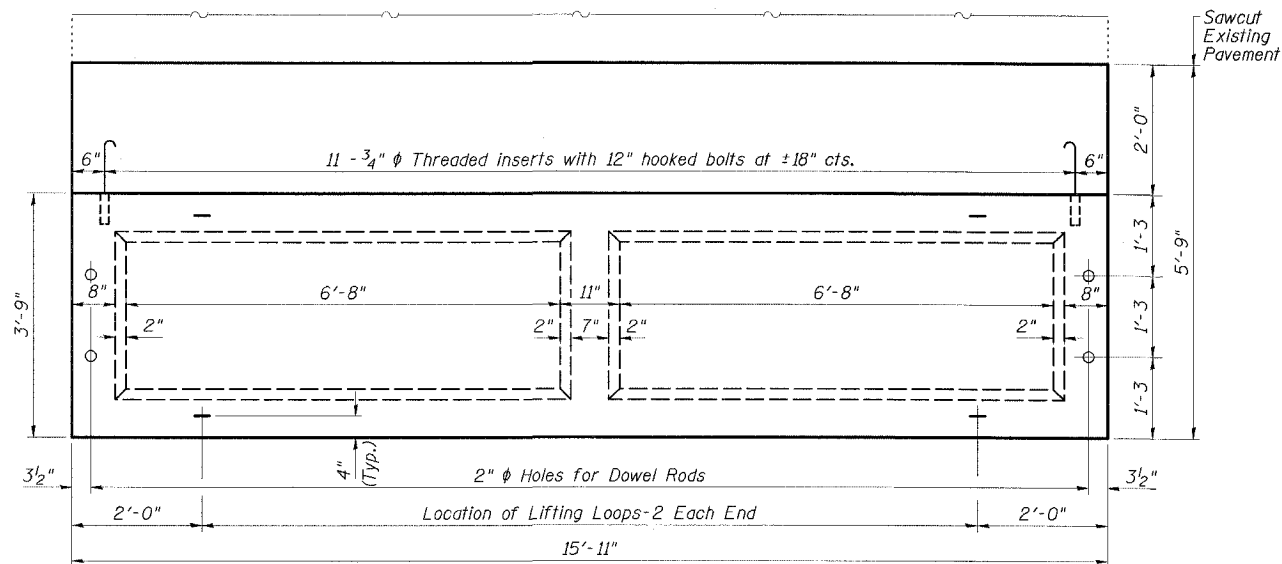
STATE OF ILLINOIS  
DEPARTMENT OF TRANSPORTATION

ROUTE NO.	SECTION	COUNTY	POST MILES	SHEET	SHEET NO. 7 13 SHEETS
FAP 132	IBR-1	SALINE	114	29	
FED. ROAD DIST. NO.		ILLINOIS	FED. AID PROJECT-		

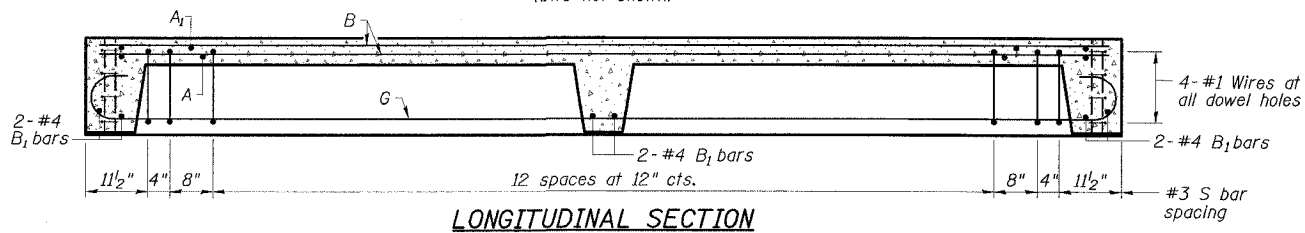
78010



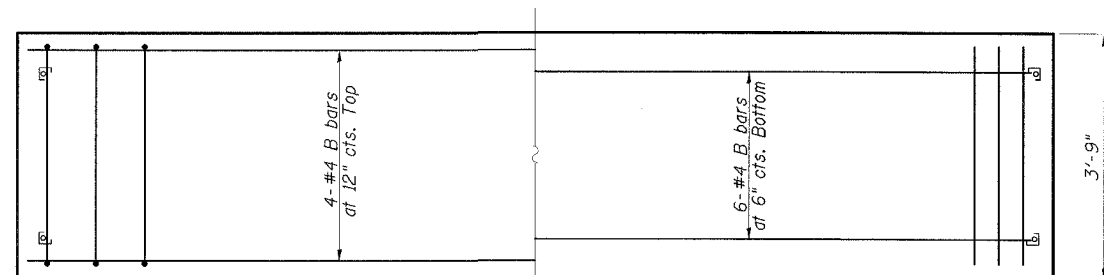
ELEVATION



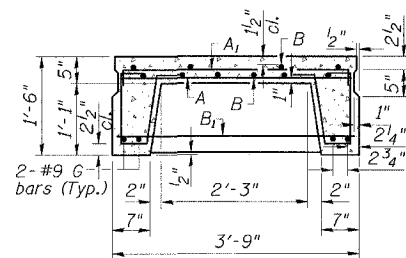
PARTIAL PLAN OF APPROACH  
(CWS not shown)



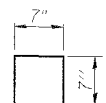
LONGITUDINAL SECTION



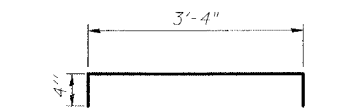
SLAB REINFORCEMENT



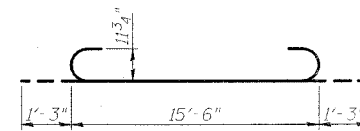
SECTION THRU PRECAST UNIT



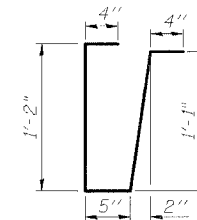
FABRIC BEARING PAD



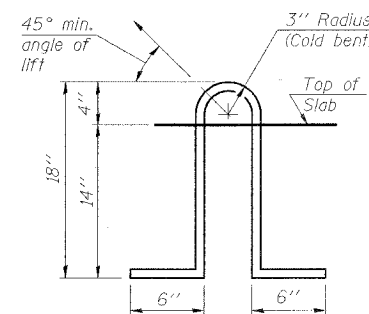
BAR A1



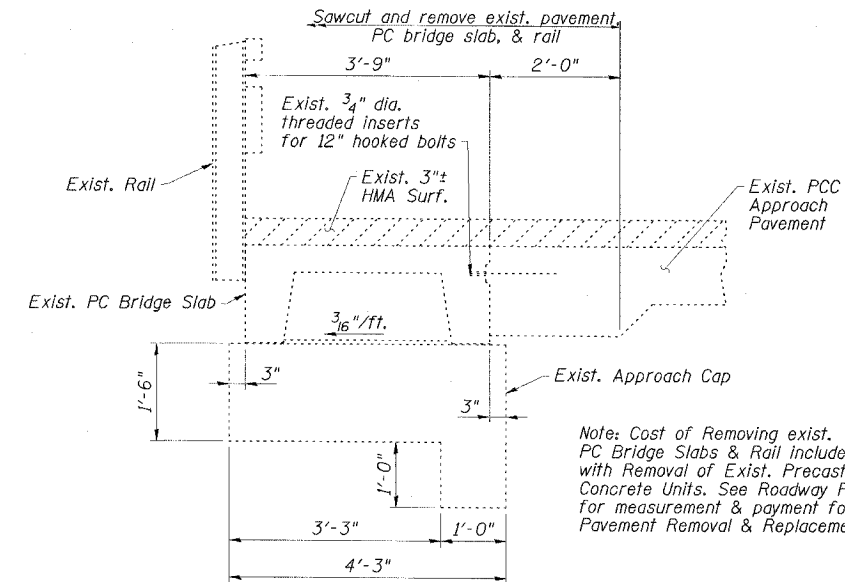
BAR G



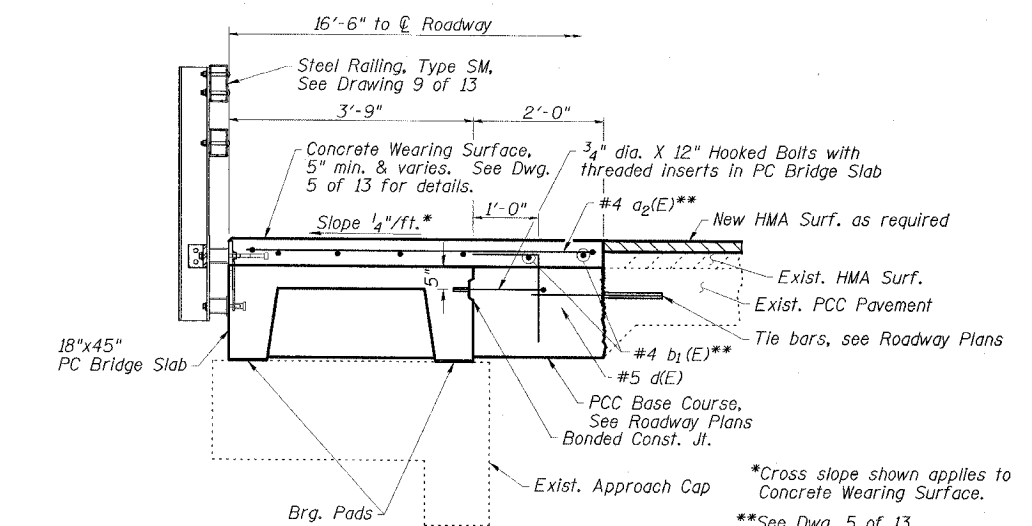
BAR S



LIFTING LOOP DETAIL



EXISTING CROSS SECTION



PROPOSED CROSS SECTION

Note: Cost of Removing exist. PC Bridge Slabs & Rail included with Removal of Exist. Precast Concrete Units. See Roadway Plans for measurement & payment for Pavement Removal & Replacement.

\*Cross slope shown applies to Concrete Wearing Surface.  
\*\*See Dwg. 5 of 13.

NOTES

Lifting loops shall be 2-1/2" φ-270 ksi strands, as shown.  
Reinforcing steel shall conform to ASTM A 706 (IL MOD), Grade 60.  
The bearing seat surfaces shall be adjusted by shimming to assure firm and even bearing. Two 1/8" fabric adjusting shims of the dimensions of the Bearing Pad shall be provided for each bearing.  
Keyway surfaces shall be cleaned to remove form oil or other bond breaking material prior to shipment of the slabs. Cleaning shall be done by sandblasting the keyway areas between top of the slab and the bottom edge of the key.  
Corrosion Inhibitor, per Article 1020.05(b)(12) of the Standard Specifications, shall be used in the concrete for precast concrete bridge slabs.  
Required Strength, f'c, shall be 4500 p.s.i.  
See Dwg. No. 2 of 13 for location of rail anchors and additional notes.  
Cost of reinforcement and accessories cast into the slab unit, bearing pads, turning, drilling for, placing and grouting anchor rods and 3/4" φ hooked bolts is included in contract Unit Price for "Precast Concrete Bridge Slab."  
The Precast Concrete Bridge Slab shall be erected and aligned with the exterior face of the exterior Deck Beam after Deck Beams are in final position.

BILL OF MATERIAL

Item	Unit	Quantity
Precast Concrete Bridge Slab	Sq. Ft.	239

APPROACH DETAILS  
IL 34/145 OVER BRIER CREEK  
FAP ROUTE 132 - SECTION IBR-1  
SALINE COUNTY  
STATION 102+28.00  
STRUCTURE NO. 083-0018

**ESCA**  
CONSULTANTS, INC.  
DESIGNED BY: JMS 05/07  
DRAWN BY: HAS 05/07  
CHECKED BY: MTD 06/07  
APPROVED BY: RDP 06/07