

STATE OF ILLINOIS  
DEPARTMENT OF TRANSPORTATION

ROUTE NO.	SECTION	COUNTY	SPANS	PIERS	SHEET NO. 8
FAP 132	IBR-1	SALINE	114	30	13 SHEETS
FED. FUND DIST. NO.	ILLINOIS	FED. AID PROJECT			

78010

**NOTES**

After beams have been erected, holes shall be drilled into substructure and dowels rods placed. Dowel holes shall be filled with non-shrink grout to top of beam and allowed to cure min. 24 hrs. prior to grouting the shear keys.

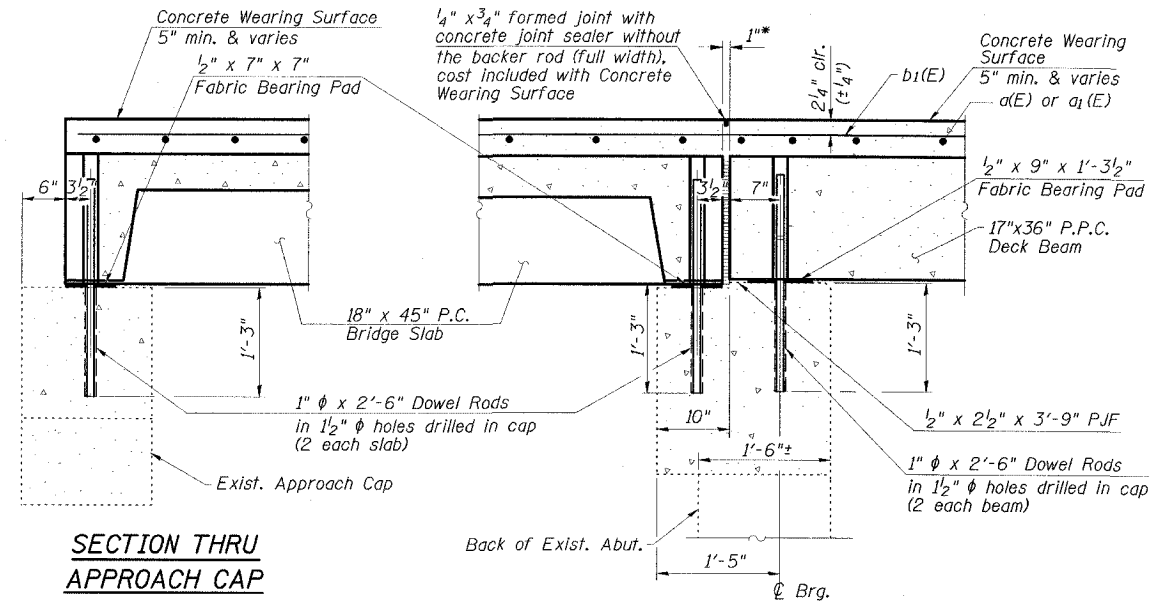
Concrete wearing surface to be poured after grouting the shear keys.

Dowel rods drilled in cap are included in the cost of Precast Prestressed Concrete Deck Beams (17" depth) or Precast Concrete Bridge Slabs.

The rail anchorage shall be cast with the beam or slab and the wearing surface shall be cast in the field. Formwork necessary for the wearing surface may be secured utilizing the bottom rail anchorage inserts and/or additional inserts cast into the beam or slab. Drilling into the beam or slab will not be permitted.

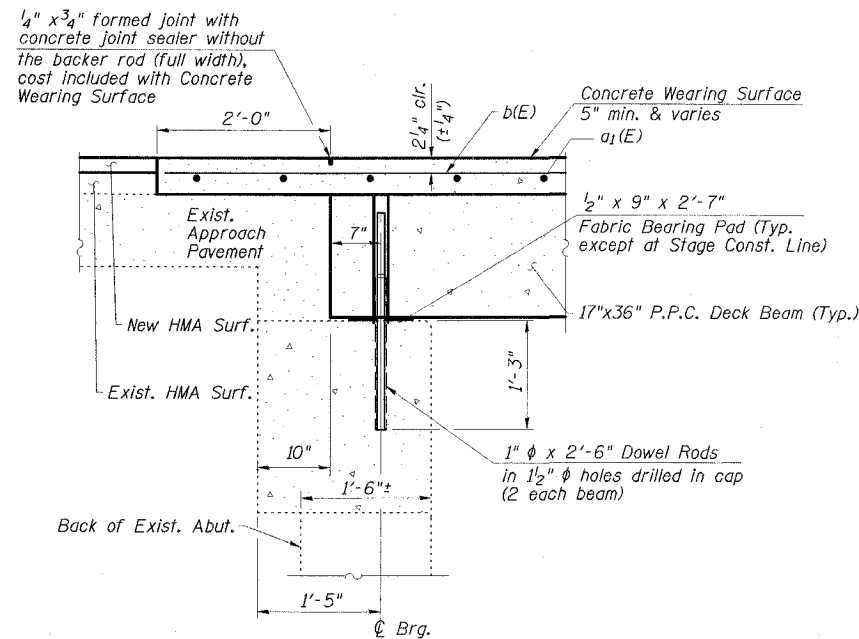
Anchor bolts shall be ASTM F1554 all-thread (or an Engineer-approved alternate material) of the grade(s) and diameter(s) specified. ASTM A307 Grade C anchor bolts may be used in lieu of ASTM F1554 Grade 36 (Fy=36ksi). The corresponding specified grade of AASHTO M314 anchor bolts may be used in lieu of ASTM F1554.

Drilled and set anchor bolts shall be installed according to Article 521.06 of the Standard Specifications.



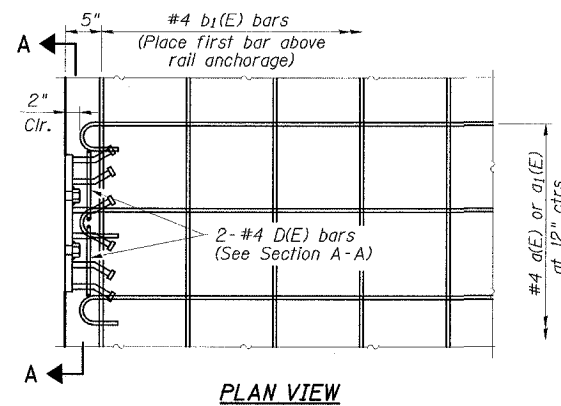
**SECTION THRU  
APPROACH CAP**

**SECTION THRU ABUTMENT  
@ OUTSIDE BEAM**

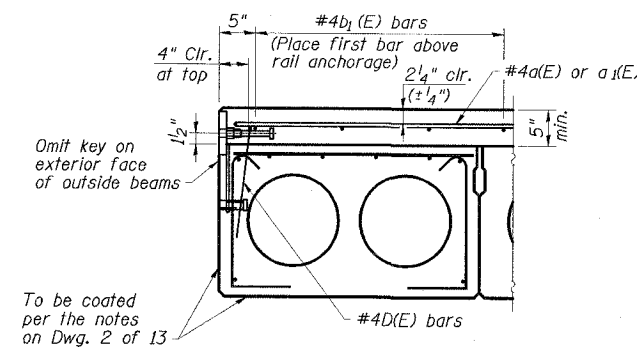


**SECTION THRU ABUTMENT @ RDWY.**

\* 1" joint shall be filled w/non-shrink grout, 1" dimension may vary to accommodate variation in beam lengths

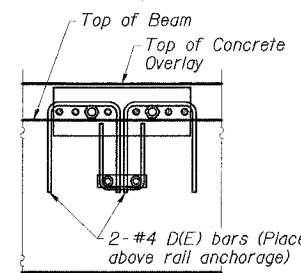


**PLAN VIEW**

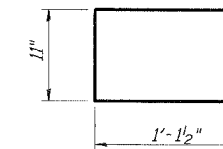


**FASCIA BEAM CROSS SECTION**

See Typical Section - Interior Beams on Dwg. 5 of 13 for strand pattern, dimensions and bar call outs.



**SECTION A-A**



**BAR D(E)**

**CONCRETE OVERLAY MODIFICATIONS FOR RAIL ANCHORAGE**  
(Bridge shown, Approach similar)

**ESCA**  
CONSULTANTS, INC.

DESIGNED BY:	JMS	05/07
DRAWN BY:	HAS	05/07
CHECKED BY:	MTD	06/07
APPROVED BY:	RDP	06/07

**SUPERSTRUCTURE AND APPROACH DETAILS**  
**IL 34/145 OVER BRIER CREEK**  
**FAP ROUTE 132 - SECTION IBR-1**  
**SALINE COUNTY**  
**STATION 102+28.00**  
**STRUCTURE NO. 083-0018**