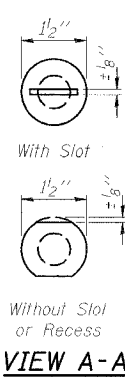
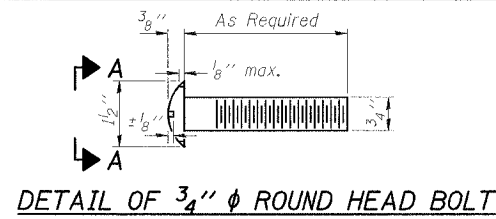


STATE OF ILLINOIS  
DEPARTMENT OF TRANSPORTATION

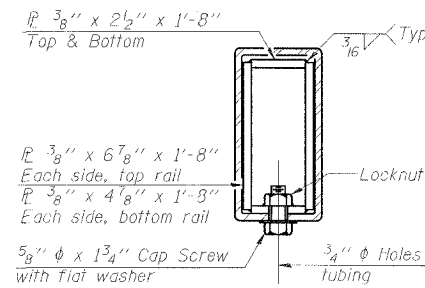
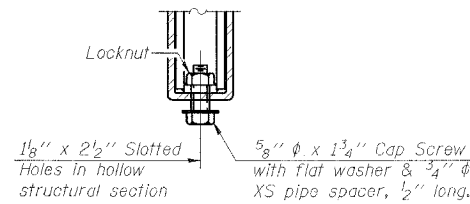
ROUTE NO.	SECTION	COUNTY	SHEETS	SHEET	SHEET NO. 9 13 SHEETS
FAP 132	IBR-1	SALINE	114	31	
FED. ROAD DIST. NO.		ILL. DIST. PROJECT			

78010

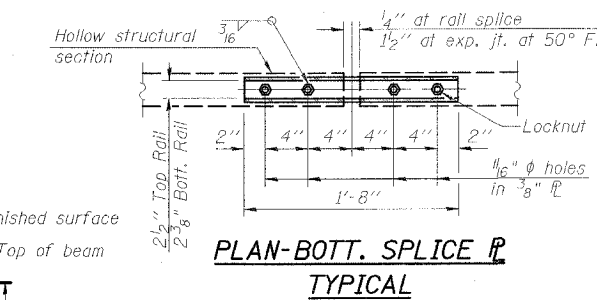
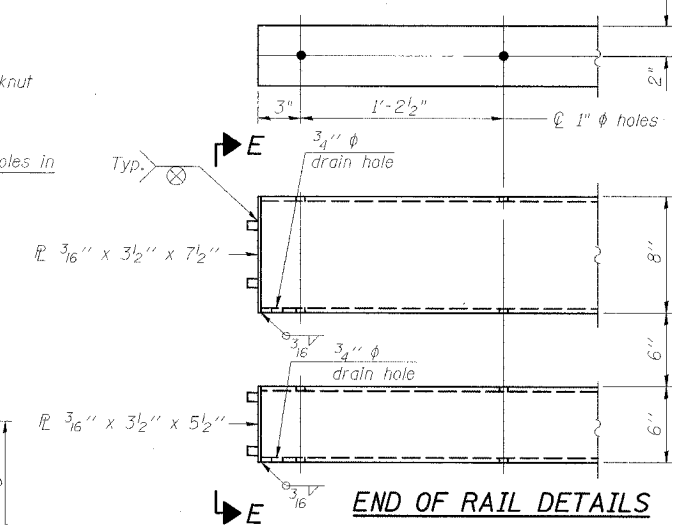


4-3/4"  $\phi$  x 6" Round Head Bolts (With slot or approved recess in head) with locknut & flat washer. 7/8"  $\phi$  holes in hollow structural section may be drilled in the field.

RAIL SPLICE CONNECTION  
AT EXPANSION JT.

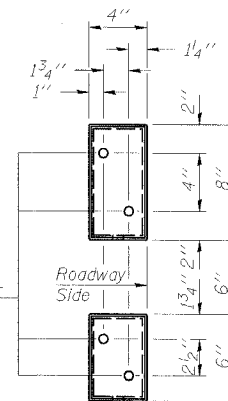


SECTION AT  
RAIL SPLICE

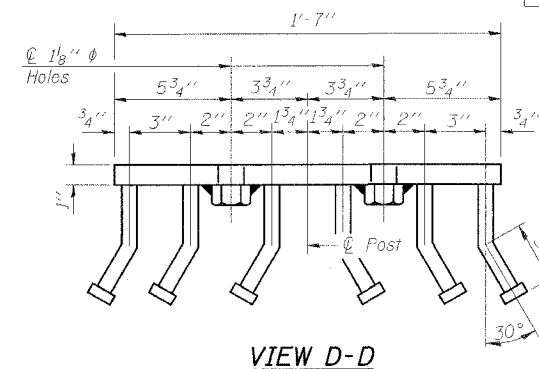


PLAN-BOTT. SPLICE TYPICAL

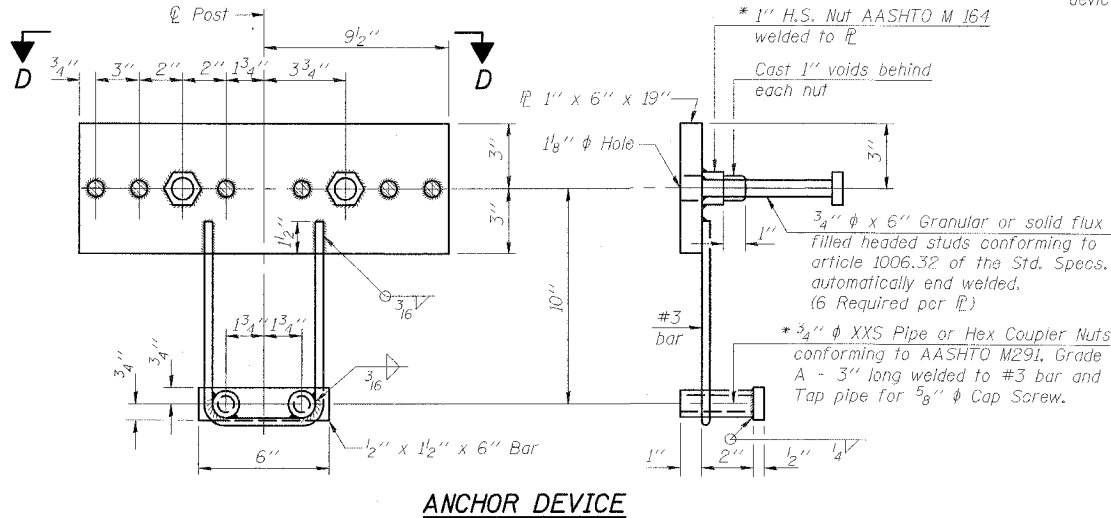
1/4" at rail splice  
1/2" at exp. jt. at 50° F.  
1/8"  $\phi$  holes in 3/8" PL



VIEW E-E



VIEW D-D



ANCHOR DEVICE

Notes:  
All field drilled holes shall be coated with an approved zinc rich paint before erection.  
For multi-span bridges, sufficient 1/4" x 6" x 1'-2" galvanized steel shims shall be provided to align rail between adjacent spans. Cost included with Steel Railing, Type SM.  
Steel rail elements shall be galvanized according to Article 509.05 of the Standard Specifications.  
\*\* The studs of the anchor devices shall be placed below the top reinforcement bars and the outermost longitudinal reinforcement bar shall be placed directly above the studs of the rail post anchor device.

BILL OF MATERIAL

Item	Unit	Quantity
Steel Railing, Type SM	Foot	129

STEEL RAILING, TYPE SM  
IL 34/145 OVER BRIER CREEK  
FAP ROUTE 132 - SECTION IBR-1  
SALINE COUNTY  
STATION 102+28.00  
STRUCTURE NO. 083-0018

**ESCA**  
CONSULTANTS, INC.

DESIGNED BY:	JMS	05/07
DRAWN BY:	HAS	05/07
CHECKED BY:	MTD	06/07
APPROVED BY:	RDP	06/07

(6'-3" Maximum Post Spacing) (5" minimum to 1/8" maximum CWS thickness)

\* Threaded areas shall be plugged or blocked off during casting of beam. Galvanized after fabrication.