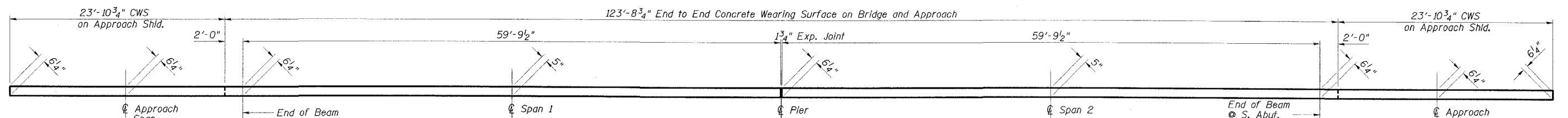
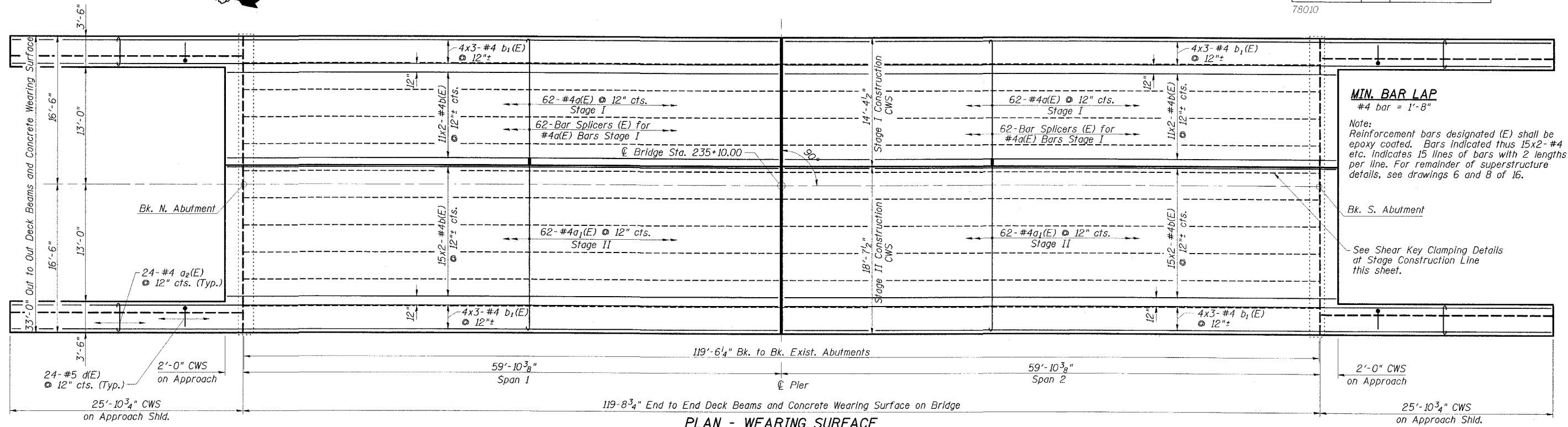


STATE OF ILLINOIS
DEPARTMENT OF TRANSPORTATION

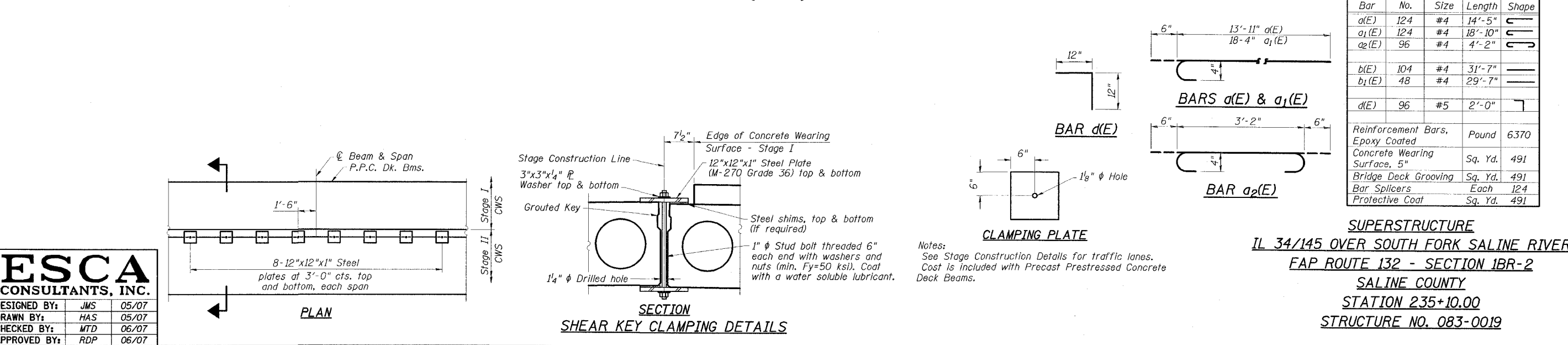
ROUTE NO.	SECTION	COUNTY	SHEET	DATE	SHEET NO.
FAP 132	IBR-2	SALINE	114	47	16 SHEETS
FED. ROAD DIST. NO.		ILLINOIS	FED. AID PROJECT		

78010



CONCRETE WEARING SURFACE BILL OF MATERIAL

Bar	No.	Size	Length	Shape	
a(E)	124	#4	14'-5"	C	
a ₁ (E)	124	#4	18'-10"	C	
a ₂ (E)	96	#4	4'-2"	C	
b(E)	104	#4	31'-7"	—	
b ₁ (E)	48	#4	29'-7"	—	
d(E)	96	#5	2'-0"	L	
Reinforcement Bars, Epoxy Coated				Pound	6370
Concrete Wearing Surface, 5"				Sq. Yd.	491
Bridge Deck Grooving				Sq. Yd.	491
Bar Splicers				Each	124
Protective Coat				Sq. Yd.	491



ESCA
CONSULTANTS, INC.

DESIGNED BY:	JMS	05/07
DRAWN BY:	HAS	05/07
CHECKED BY:	MTD	06/07
APPROVED BY:	RDP	06/07

SUPERSTRUCTURE
IL 34/145 OVER SOUTH FORK SALINE RIVER
FAP ROUTE 132 - SECTION IBR-2
SALINE COUNTY
STATION 235+10.00
STRUCTURE NO. 083-0019