



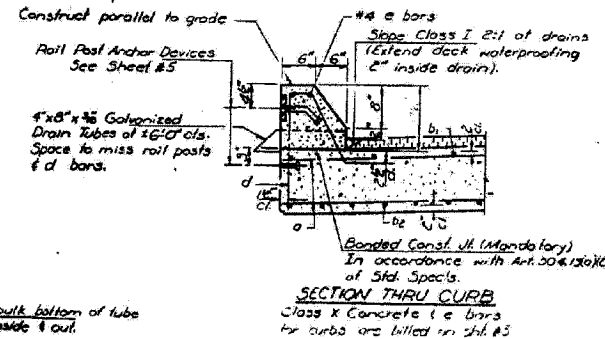
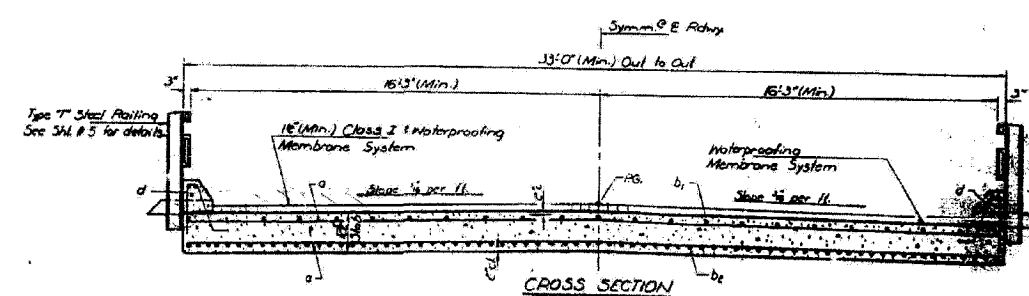
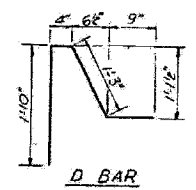
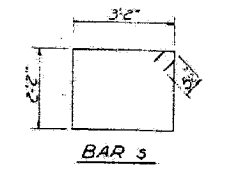
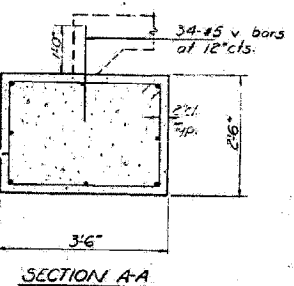
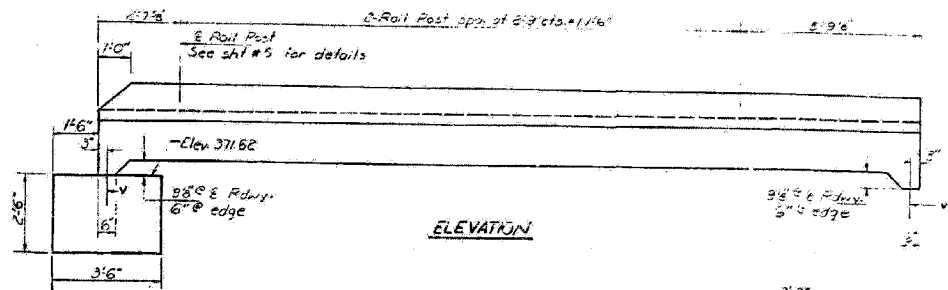
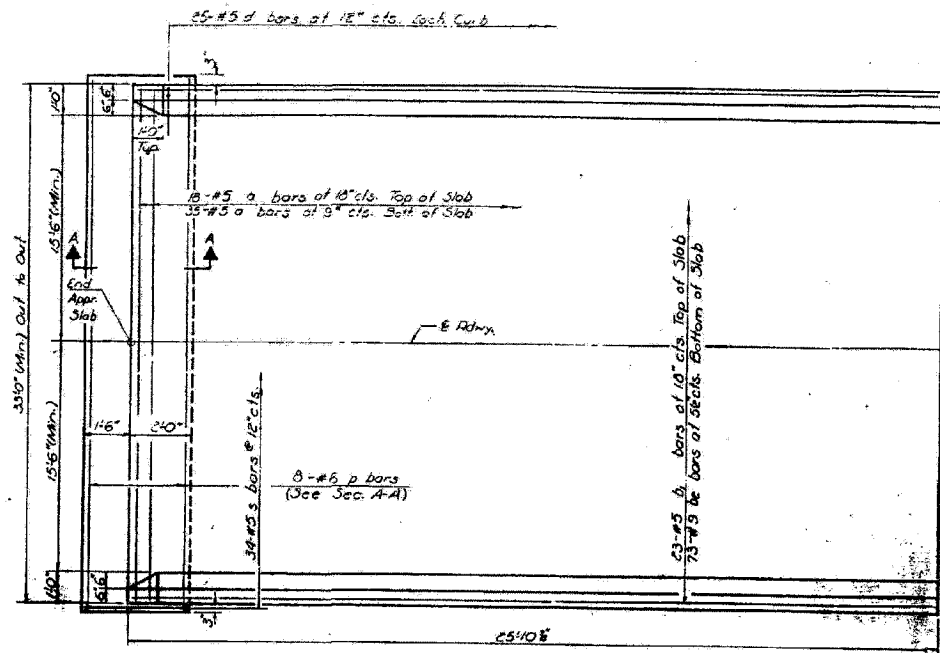
CONTRACT NO. 78010

FAP RTE	SECTION	COUNTY	TOTAL SHEETS	SHEET NO.
132	1BR-2	SALINE	114	60
STA.		TO STA.		
FED. ROAD DIST. NO.	ILLINOIS	FED. AID PROJECT AID		

STATE OF ILLINOIS
DEPARTMENT OF TRANSPORTATION

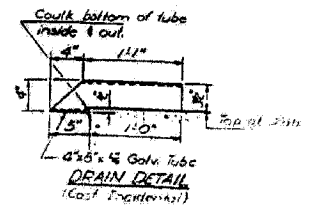
NO.	DATE	BY	REVISION

SHEET NO. 2
OF 2 SHEETS



TWO APPR. SLABS
BILL OF MATERIAL

Bar	No.	Size	Length	Shape
a	106	#5	32'-9"	—
b1	45	#5	25'-0"	—
b2	146	#9	25'-0"	—
d	100	#5	4'-0"	L
P	—	#6	33'-3"	—
s	60	#5	11'-7"	□
v	66	#5	2'-0"	—
Class X Concrete		Cu Yd	30.2	
Reinforcement Bars		Pounds	19,790	



APPROACH DETAILS
F.A. RT. 132 SEE TB-DR-1
SALINE COUNTY
STA 25+1000

DESIGNED BY: JMS	EXAMINED BY: [Signature]
CHECKED BY: [Signature]	PASSED BY: [Signature]
DRAWN BY: R. Dady	APPROVED BY: [Signature]
CHECKED BY: [Signature]	

ESCA
CONSULTANTS, INC.

DESIGNED BY:	JMS	06/07
DRAWN BY:	HAS	06/07
CHECKED BY:	MTD	06/07
APPROVED BY:	RDP	06/07

EXISTING STRUCTURE PLANS
FAP RTE 132 (IL 34/145)
SECTION 1BR-2
SALINE COUNTY

FOR INFORMATION ONLY