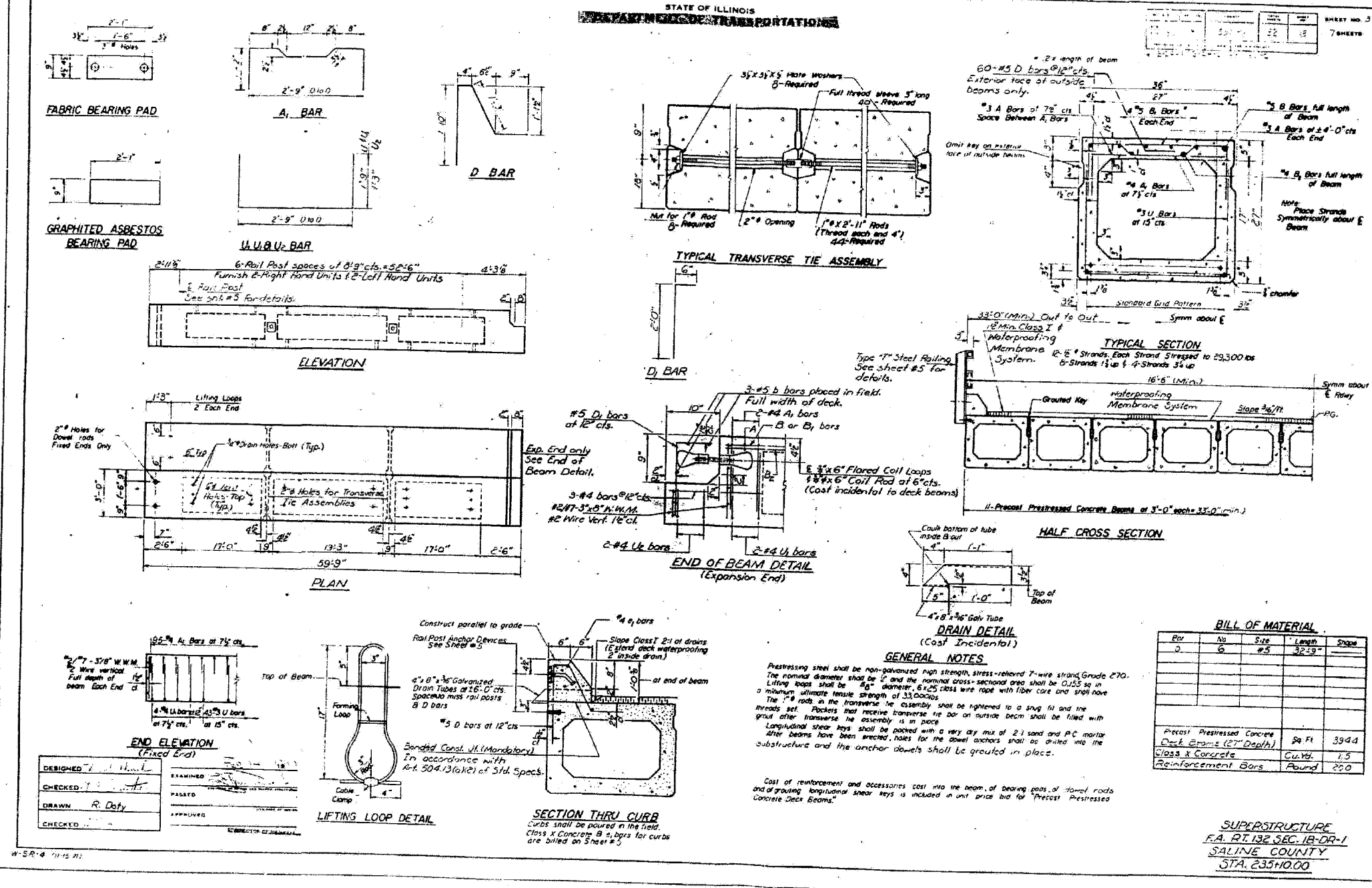


CONTRACT NO. 78010			
FAP RTE	SECTION	COUNTY	TOTAL SHEET NO.
132	IBR-2	SALINE	114 61
STA.		TO STA.	
FED. ROAD DIST. NO.		ILLINOIS FED. AID PROJECT AID	



ESCA
CONSULTANTS, INC.

DESIGNED BY:	JMS	06/07
DRAWN BY:	HAS	06/07
CHECKED BY:	MTD	06/07
APPROVED BY:	RDP	06/07

EXISTING STRUCTURE PLANS
FAP RTE 132 (IL 34/145)
SECTION IBR-2
SALINE COUNTY

FOR INFORMATION ONLY