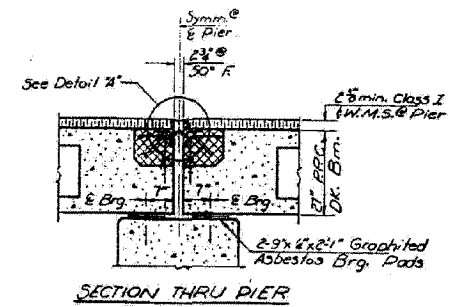
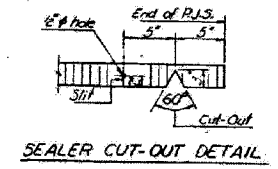
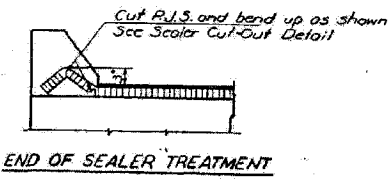
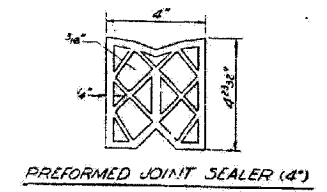
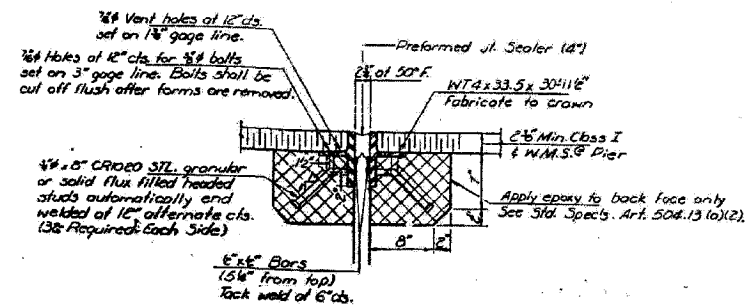
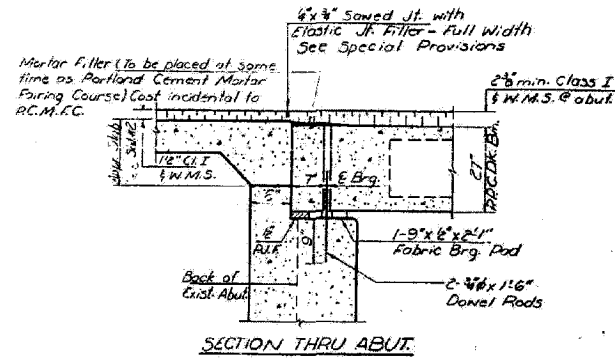


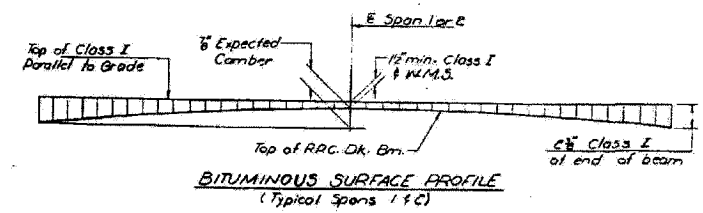
CONTRACT NO. 78010			
FAP RTE	SECTION	COUNTY	TOTAL SHEET NO.
132	1BR-2	SALINE	114 62
STA.		TO STA.	
FED. ROAD DIST. NO.	ILLINOIS	FED. AID PROJECT AID	

STATE OF ILLINOIS
DEPARTMENT OF TRANSPORTATION

DATE	SECTION	SCALE	SHEET NO.
06/07	F	AS SHOWN	14
7 SHEETS			



Dimensions are of right angles.
Cross hatched areas to be poured after beams have been erected.
Ends of beams shall be aligned at the expansion end. Any lineal variation in the beam lengths shall be placed at the fixed end. See End of Beam Detail sheet #3 for reinforcement.



DESIGNED BY: JMS	EXAMINED BY: [Signature]
CHECKED BY: RDP	DRAWN BY: [Signature]
DRAWN BY: R Doly	APPROVED BY: [Signature]
CHECKED BY: [Signature]	

SUPERSTRUCTURE DETAILS
F.A. RT. 132 SEC. 1B-DK-1
SALINE COUNTY
STA. 2+35+10.00

ESCA
CONSULTANTS, INC.

DESIGNED BY:	JMS	06/07
DRAWN BY:	HAS	06/07
CHECKED BY:	MTD	06/07
APPROVED BY:	RDP	06/07

EXISTING STRUCTURE PLANS
FAP RTE 132 (IL 34/145)
SECTION 1BR-2
SALINE COUNTY