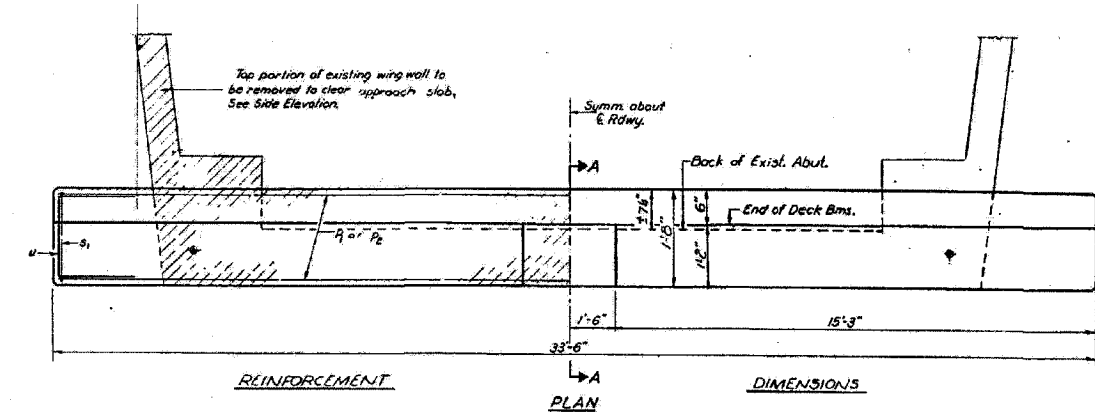
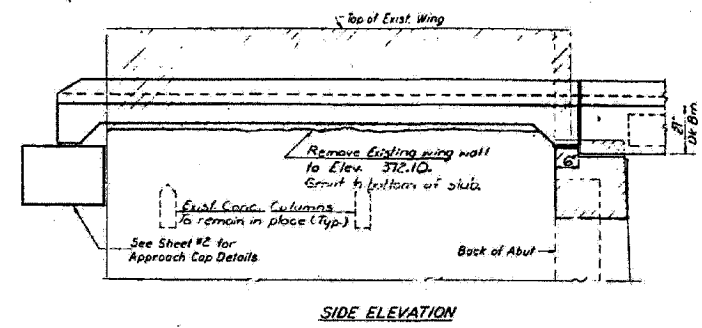
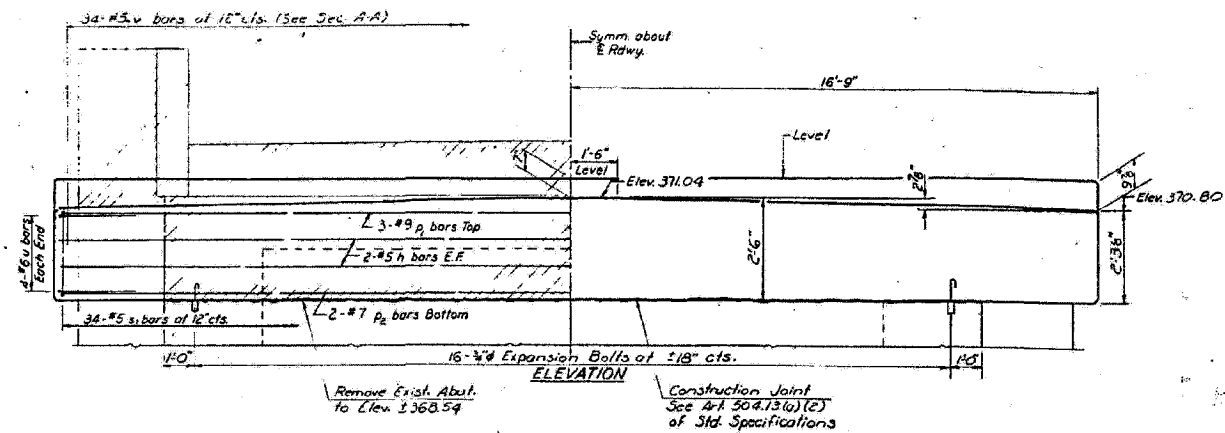
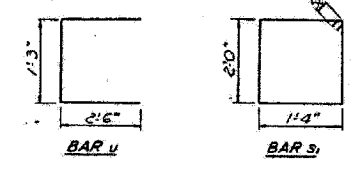


SHEET NO. 6			
7 SHEETS			
NO.	DATE	BY	CHKD.
102	3/10/07	Has	JMS
* E-D-C-E * E-D-C-E * K-W-E-E			



$$33.5' \approx 7.5 \times \frac{3}{16} = 7.4375'$$

NOTES:
Hatched Areas indicate Concrete Removal.
All edges shall have standard 90° chamfers except as noted.
Expansion bolts shall be anchored in sound concrete.

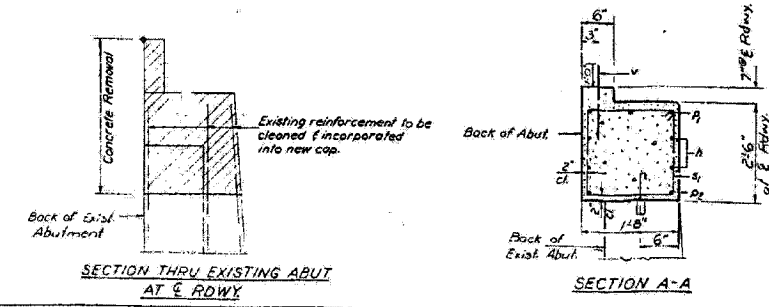


TWO ABUTMENTS
BILL OF MATERIAL

Bar	No.	Size	Length	Shape
h	8	#5	33'-3"	—
dl	6	#9	33'-3"	—
de	4	#7	33'-3"	—
sl	68	#5	7'-7"	□
u	16	#6	6'-3"	□
v	68	#5	2'-0"	—
Class X Concrete		Cu Yds.	10.7	
Reinforcement Bars		Lbs.	2060	
Concrete Removal		Cu Yds.	25	
Expansion Bolts #4		Each	32	

DESIGNED: JMS
CHECKED: HAS
DRAWN: R. Doly
CHECKED: JMS

EXAMINED: JMS
PASSED: HAS
APPROVED: JMS



NORTH AND SOUTH ABUTMENTS
F.A. RTE. 132 SEC. 1B-DK-1
SALINE COUNTY
STA. 235+10.00