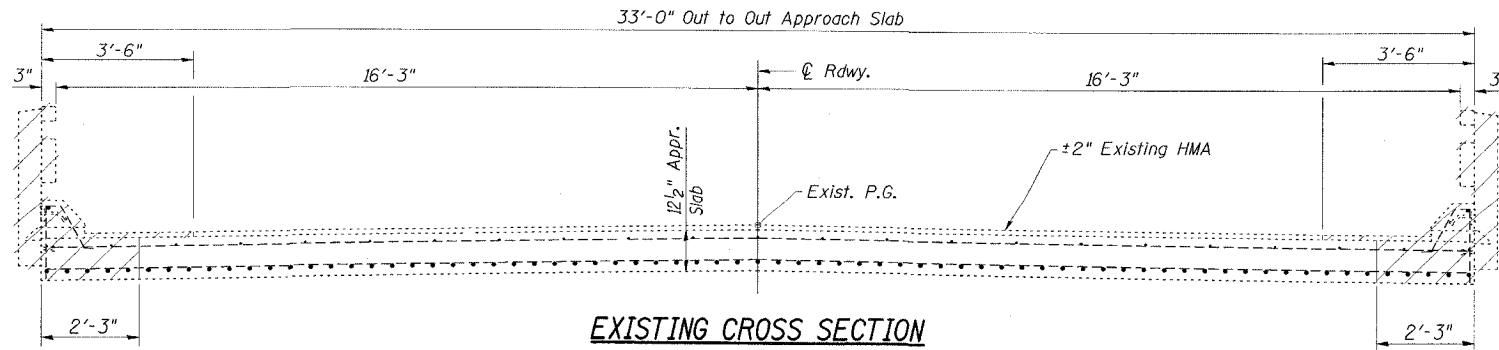


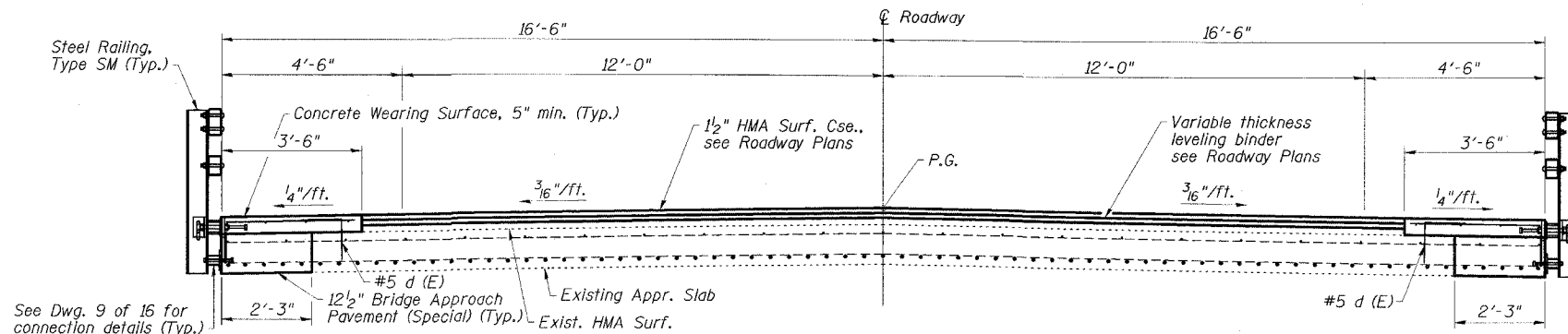
STATE OF ILLINOIS
DEPARTMENT OF TRANSPORTATION

ROUTE NO.	SECTION	COUNTY	FEEDS	SHEET	SHEET NO. 7 16 SHEETS
FAP 132	IBR-3	SALINE	114	72	
FED. ROAD DIST. NO.	ILLINOIS	FED. AID PROJECT-			

78010

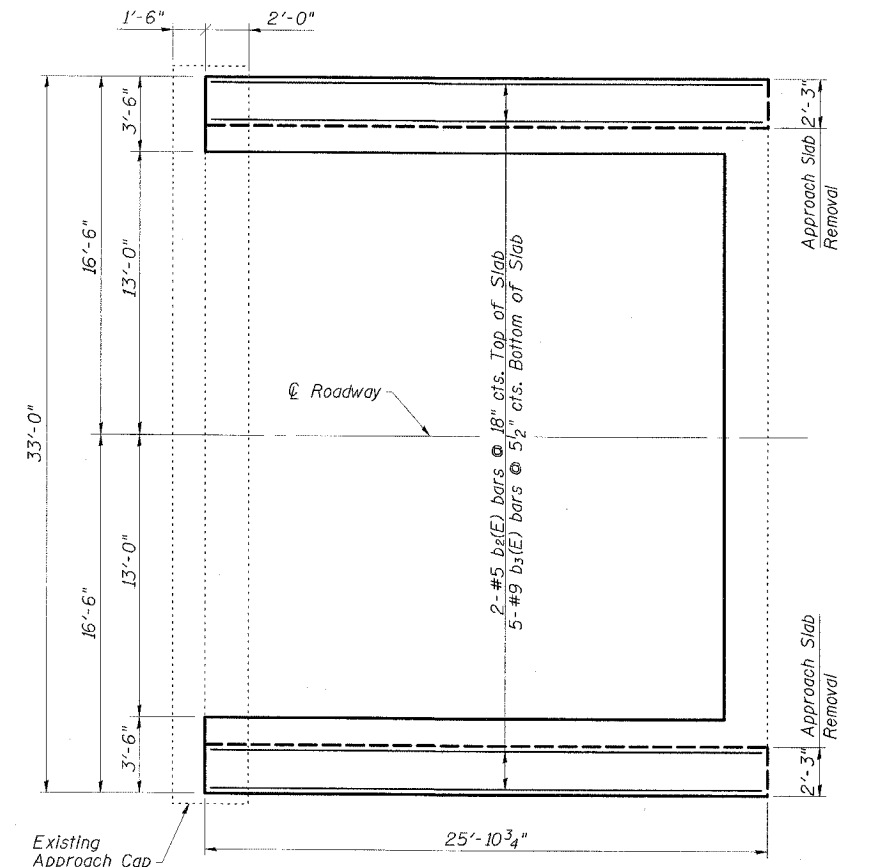


EXISTING CROSS SECTION



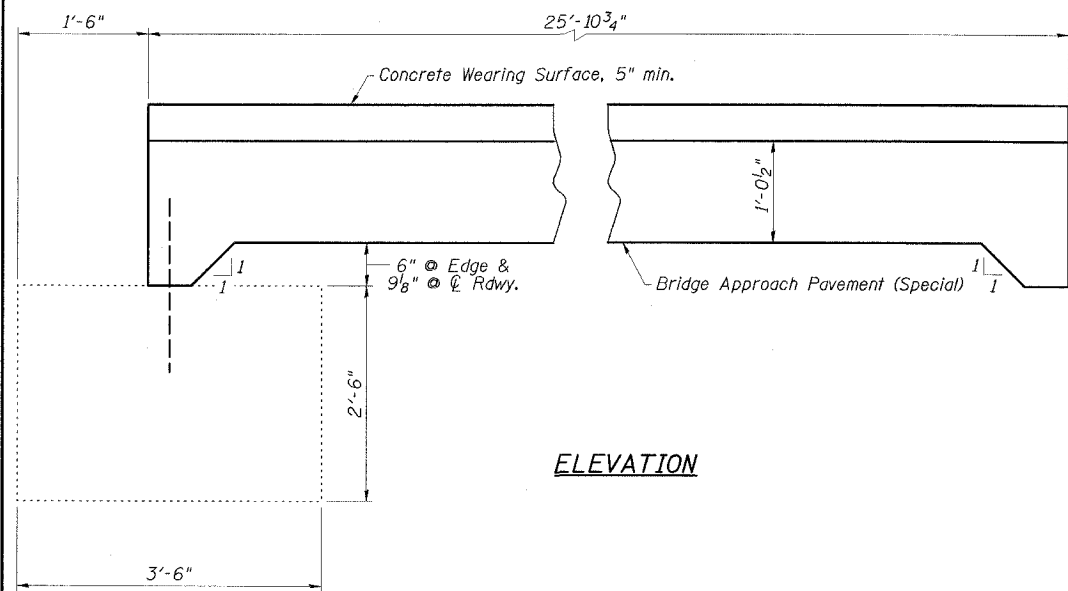
PROPOSED CROSS SECTION

Note: The cost of reinforcement bars and incorporating existing reinforcement is included in Bridge Approach Pavement (Special)

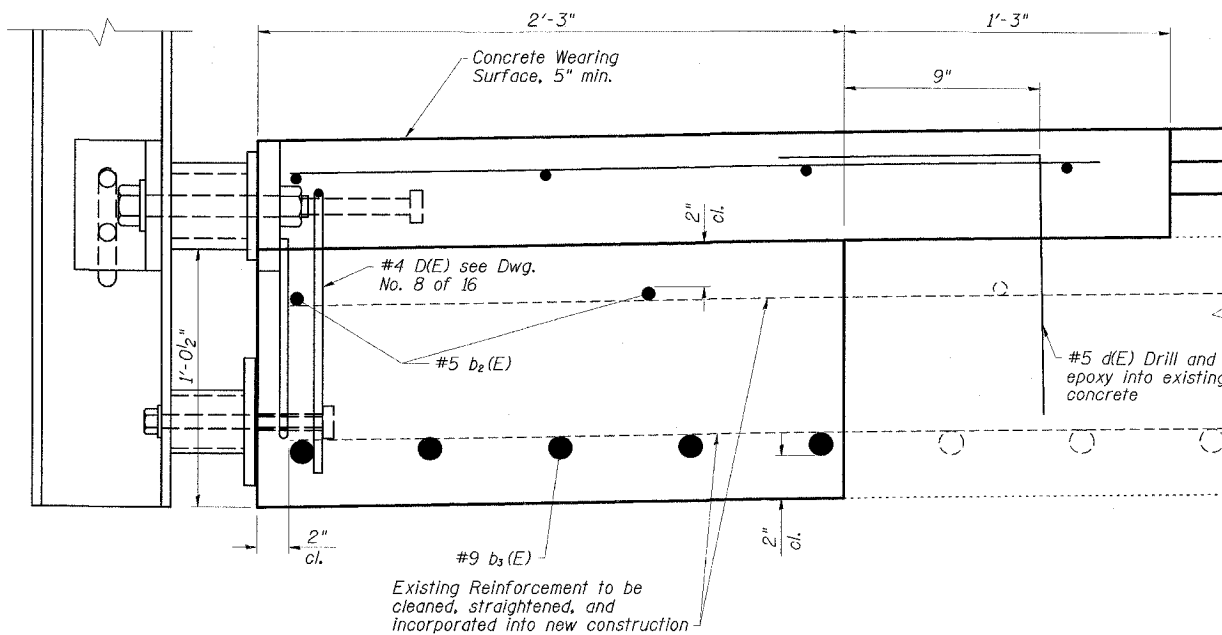


PLAN

(N. Approach shown, S. Approach similar)



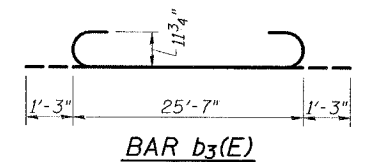
ELEVATION



ENLARGED SECTION THRU BRIDGE APPROACH PAVEMENT

TWO APPROACHES
BILL OF MATERIAL

ITEM	UNIT	QUANTITY
Bridge Approach Pav't (Special)	Sq. Yd.	26
Approach Slab Removal	Sq. Yd.	26



BAR b₃(E)

APPROACH DETAILS
IL 34/145 OVER SOUTH FORK
SALINE RIVER OVERFLOW
FAP ROUTE 132 - SECTION IBR-3
SALINE COUNTY
STATION 244+40.00
STRUCTURE NO. 083-0020

ESCA
CONSULTANTS, INC.

DESIGNED BY:	JMS	05/07
DRAWN BY:	HAS	05/07
CHECKED BY:	MTD	06/07
APPROVED BY:	RDP	06/07