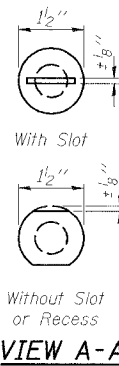
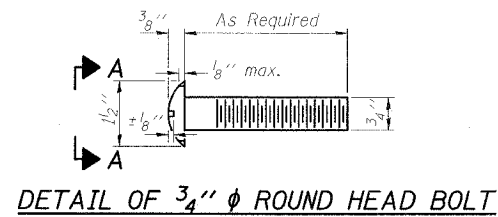


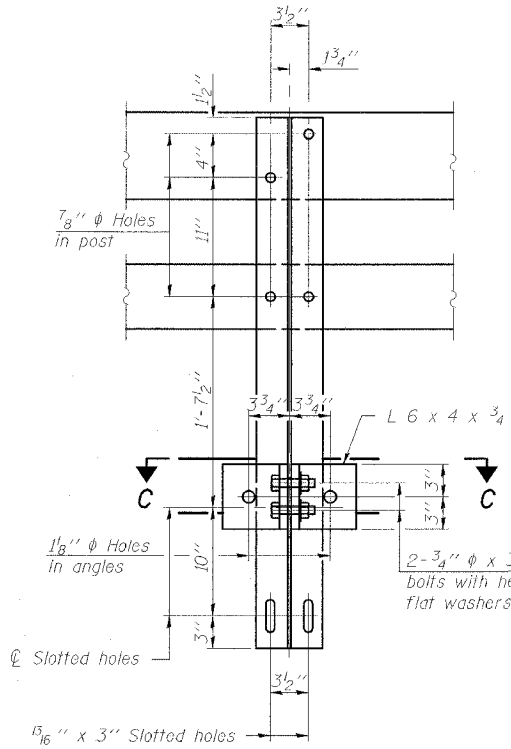
STATE OF ILLINOIS
DEPARTMENT OF TRANSPORTATION

ROUTE NO.	SECTION	COUNTY	STATION	SHEET	SHEET NO.	
FAP 132	IBR-3	SALINE	114	74	16 SHEETS	
FED. ROAD DIST. NO.					ILLINOIS	FED. AID PROJECT

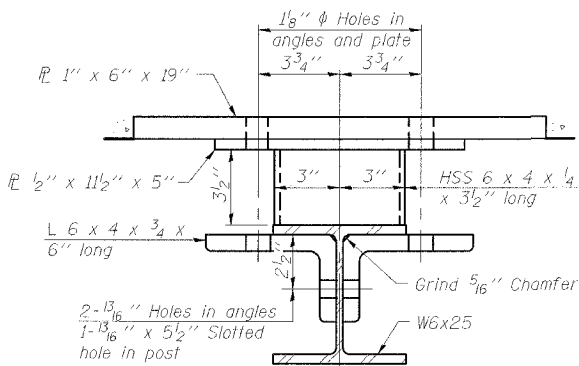
78010



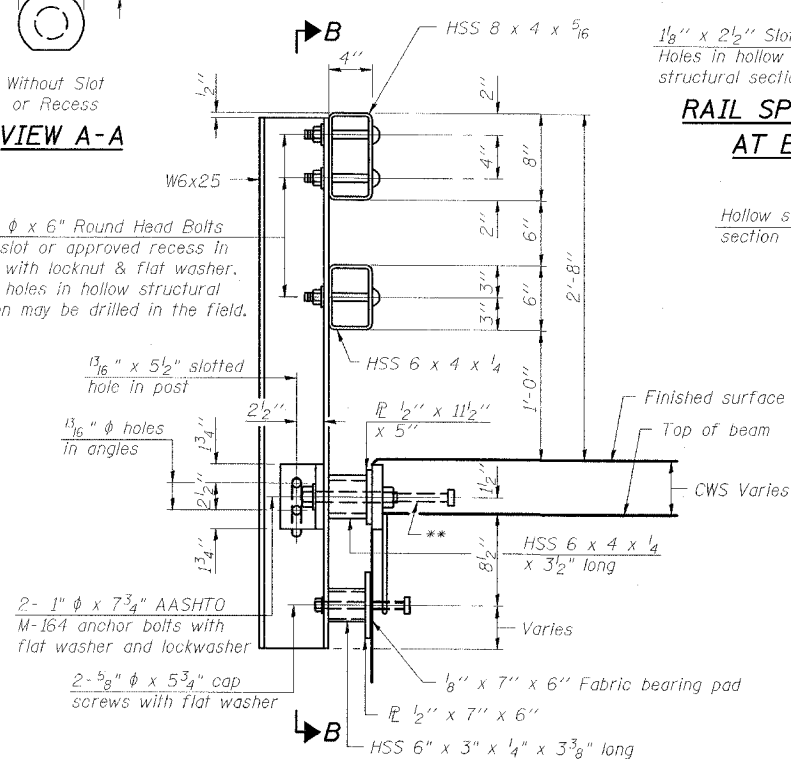
4- 3/4" ϕ x 6" Round Head Bolts
(With slot or approved recess in head) with locknut & flat washer.
7/8" ϕ holes in hollow structural section may be drilled in the field.



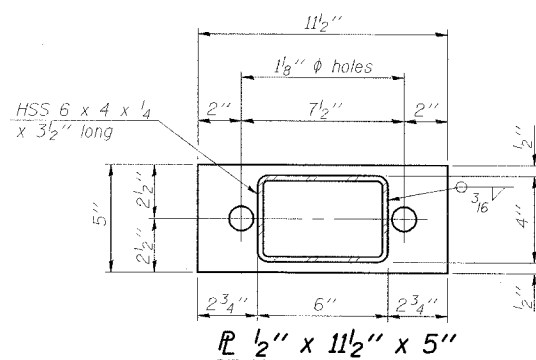
SECTION B-B



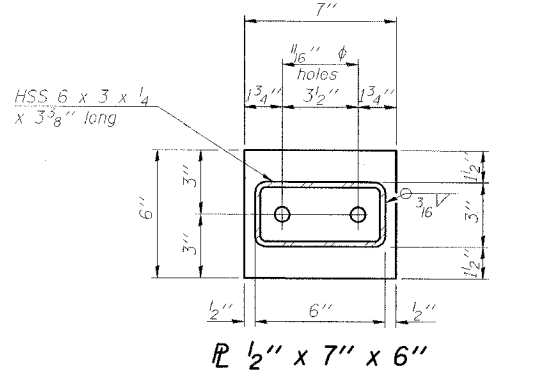
SECTION C-C



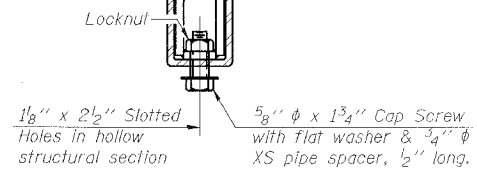
SECTION AT RAIL POST



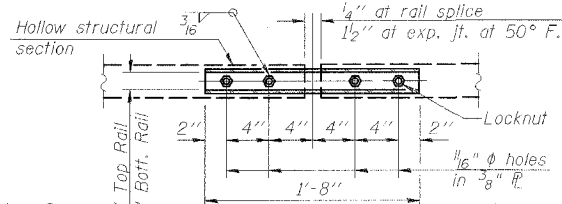
PLAN-BOTT. SPLICE R TYPICAL



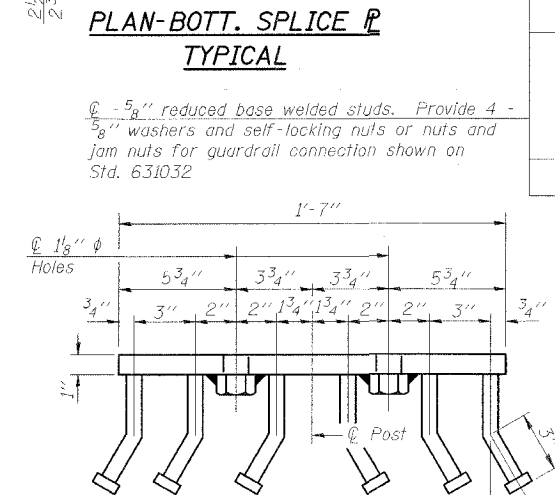
ANCHOR DEVICE



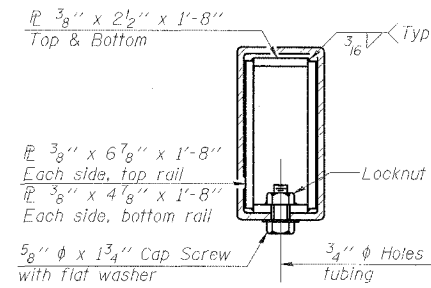
RAIL SPLICE CONNECTION AT EXPANSION JT.



SECTION AT RAIL SPLICE

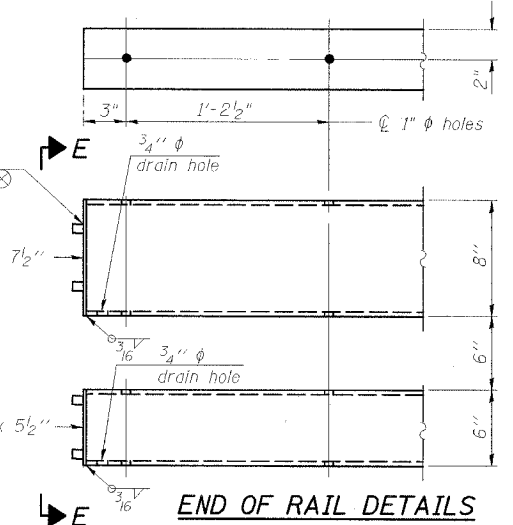


VIEW D-D



VIEW E-E

Notes:
All field drilled holes shall be coated with an approved zinc rich paint before erection.
For multi-span bridges, sufficient 1/4" x 6" x 1'-2" galvanized steel shims shall be provided to align rail between adjacent spans. Cost included with Steel Railing, Type SM. Steel rail elements shall be galvanized according to Article 509.05 of the Standard Specifications.
** The studs of the anchor devices shall be placed below the top reinforcement bars and the outermost longitudinal reinforcement bar shall be placed directly above the studs of the rail post anchor device.



END OF RAIL DETAILS

BILL OF MATERIAL

Item	Unit	Quantity
Steel Railing, Type SM	Foot	343

STEEL RAILING, TYPE SM
IL 34/145 OVER SOUTH FORK
SALINE RIVER OVERFLOW
FAP ROUTE 132 - SECTION IBR-3
SALINE COUNTY
STATION 244+40.00
STRUCTURE NO. 083-0020

ESCA
CONSULTANTS, INC.

DESIGNED BY: JMS 05/07
DRAWN BY: HAS 05/07
CHECKED BY: MTD 06/07
APPROVED BY: RDP 06/07

R-34CWS

11-1-06

(6'-3" Maximum Post Spacing) (5" minimum to 7/8" maximum CWS thickness)

* Threaded areas shall be plugged or blocked off during casting of beam. Galvanized after fabrication.