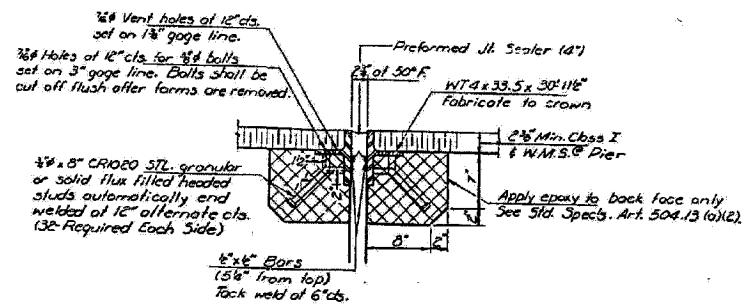
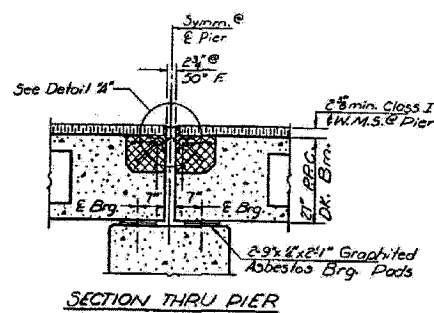
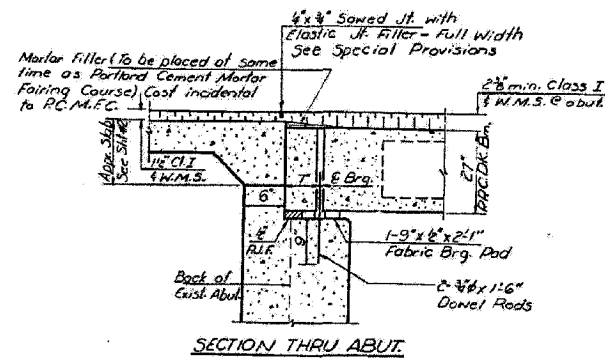


CONTRACT NO. 78010				
FAP RTE	SECTION	COUNTY	TOTAL SHEETS	NO.
132	1BR-3	SALINE	114	85
STA.		TO STA.		
FED. ROAD DIST. NO.	ILLINOIS	FED. AID PROJECT AID		

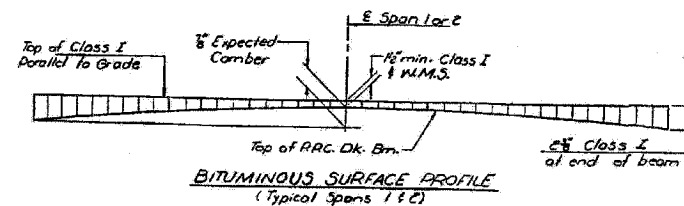
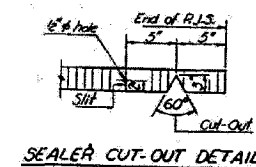
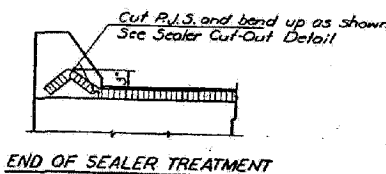
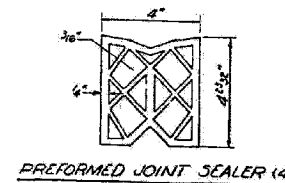
STATE OF ILLINOIS
DEPARTMENT OF TRANSPORTATION

PROJECT NO.	SECTION	COUNTY	TOTAL SHEETS	SHEET NO.
132	1BR-3	SALINE	114	85
SHEETS				



DETAIL "A"

Dimensions are of right angles. Cross hatched areas to be poured after beams have been erected. Ends of beams shall be aligned at the expansion end. Any lineal variation in the beam lengths shall be placed at the fixed end. See End of Beam Detail sht #3 for reinforcement.



DESIGNED	J. A. Huest	EXAMINED	[Signature]
CHECKED	[Signature]	PASSED	[Signature]
DRAWN	A. Dohy	APPROVED	[Signature]
CHECKED	J.P.S.		

SUPERSTRUCTURE DETAILS
F.A. RT 132 SEC 1B-DP-E
SALINE COUNTY
STA 244 +40.00

ESCA
CONSULTANTS, INC.

DESIGNED BY:	JMS	06/07
DRAWN BY:	HAS	06/07
CHECKED BY:	MTD	06/07
APPROVED BY:	RDP	06/07

FOR INFORMATION ONLY

EXISTING STRUCTURE PLANS
FAP RTE 132 (IL 34/145)
SECTION 1BR-3
SALINE COUNTY