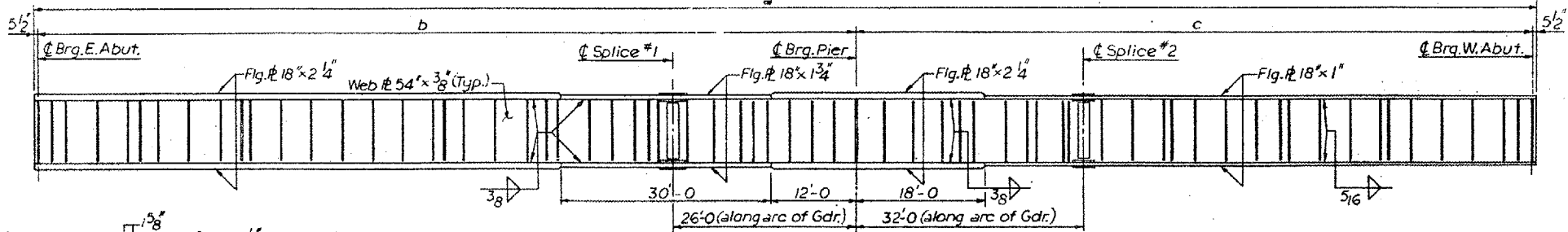
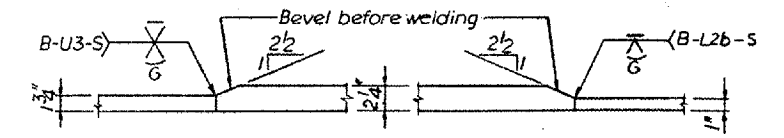


FRAMING PLAN
All CFI Diaphragms are radial.

TABLE OF DIMENSIONS				
Dim.	Girder ①	Girder ②	Girder ③	Girder ④
a	214'-11"	214'-10 ³ / ₁₆ "	214'-10 ³ / ₁₆ "	214'-9 ³ / ₄ "
b	118'-2 ⁵ / ₈ "	118'-2 ³ / ₈ "	118'-2 ³ / ₈ "	118'-1 ⁷ / ₈ "
c	95'-9 ³ / ₈ "	95'-9 ³ / ₁₆ "	95'-9 ³ / ₁₆ "	95'-8 ⁷ / ₈ "
Rad.	557'-0"	564'-4"	571'-8"	579'-0"

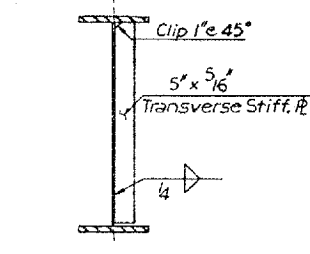
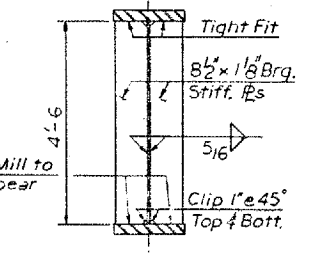
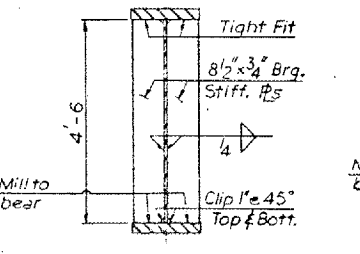
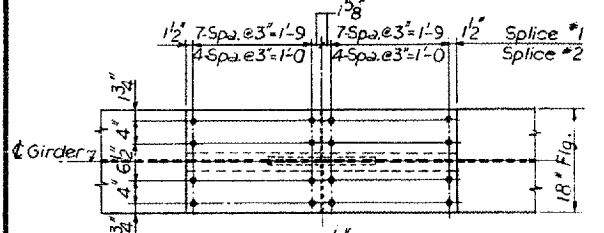


GIRDER ELEVATION



FLANGE SHOP SPLICES

NOTE:
Transverse stiffeners between splices shall be welded to bottom flange with 1/4" fillet weld and shall have 5/8" undercut at top. Remainder of stiffeners shall be welded to top flange with 1/4" fillet weld and shall have 3/8" undercut at bottom. Transverse stiffeners at Girders ① & ④ shall be placed on inside face of web. For Dim. a, b & c see "Table of Dimensions" and for Stiffener spacing & location see Framing Plan.



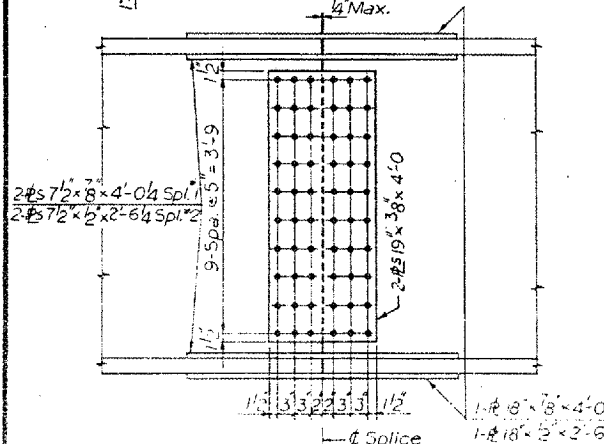
SECTION AT ABUTMENTS

SECTION AT PIER

TYPICAL SECTION NEAR ABUTMENT

INTERIOR GIRDER MOMENT TABLE			
	0.45 Span 2	Pier	0.4 Span 3
I (in ⁴)	68,990	68,990	32,150
Φ (K/I)	1.42	1.42	1.42
M ₀ (K)	1,901	- 2,369	673
M ₁ (K)	973	- 757	632
Imp. (K)	201	- 163	143
M TOTAL (K)	3,075	- 3,289	1,448

INTERIOR GIRDER REACTION TABLE			
	E. Abut.	Pier	W. Abut.
R ₀ (K)	78.4	207.3	46.7
R ₁ (K)	56.4	95.8	51.3
Imp. (K)	11.6	14.2	11.6
R TOTAL (K)	146.4	317.3	109.6



FIELD SPLICE DETAIL

BRIDGE NO. 5
S.N. 100-0059
FOR INFORMATION ONLY

ILLINOIS DIVISION OF HIGHWAYS		
F.A.I. ROUTE 24		
PROJECT	SECTION XI-2HB-2	
WILLIAMSON COUNTY		
STEEL GIRDER AND FRAMING DETAILS		
Designed By: <i>Y.M.</i>	Drawn By: <i>E.M.</i>	Quantity By: <i>K.R.S.</i>
Checked By: <i>L.P.</i>	Checked By: <i>M.T.F.</i>	Checked By: <i>M.T.F.</i>