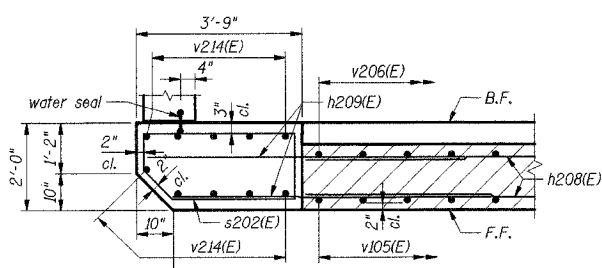
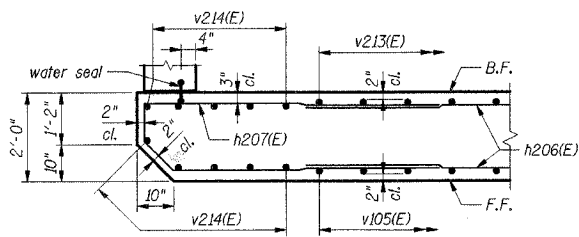


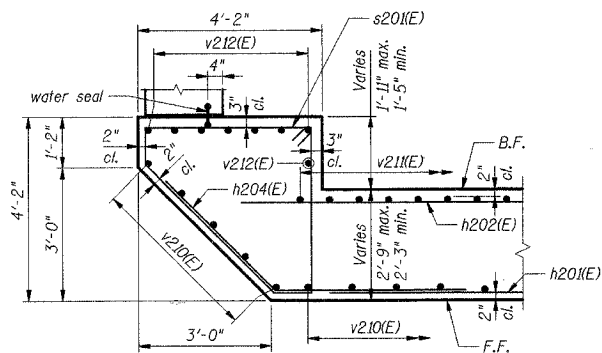
F.A. RTE.	SECTION	COUNTY	TOTAL SHEETS	SHEET NO.
*	*	WILL	64	30
STA.	TO STA.			
FED. ROAD DIST. NO.	ILLINOIS	FED. AID PROJECT		
* 02-11106-01-BR	CONTRACT NO. 83949			



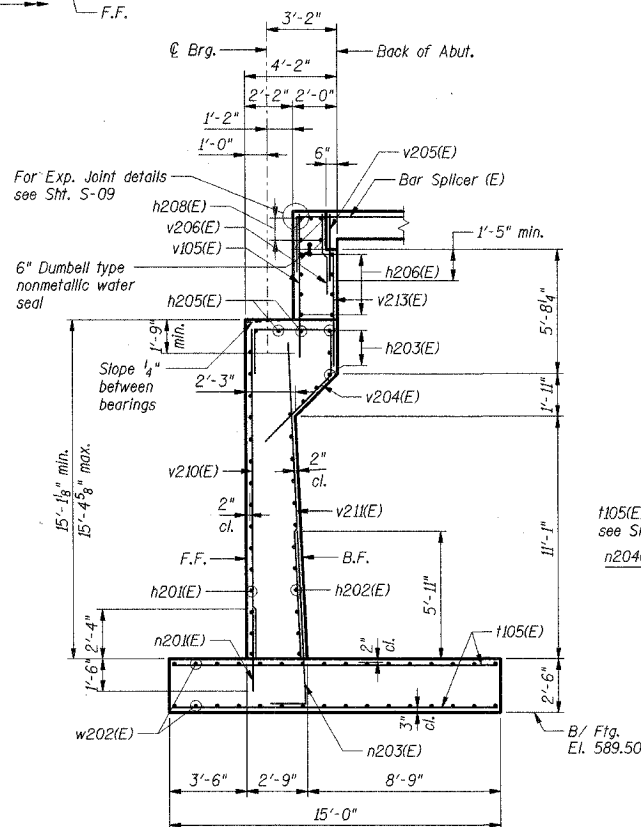
**SECTION D-D**



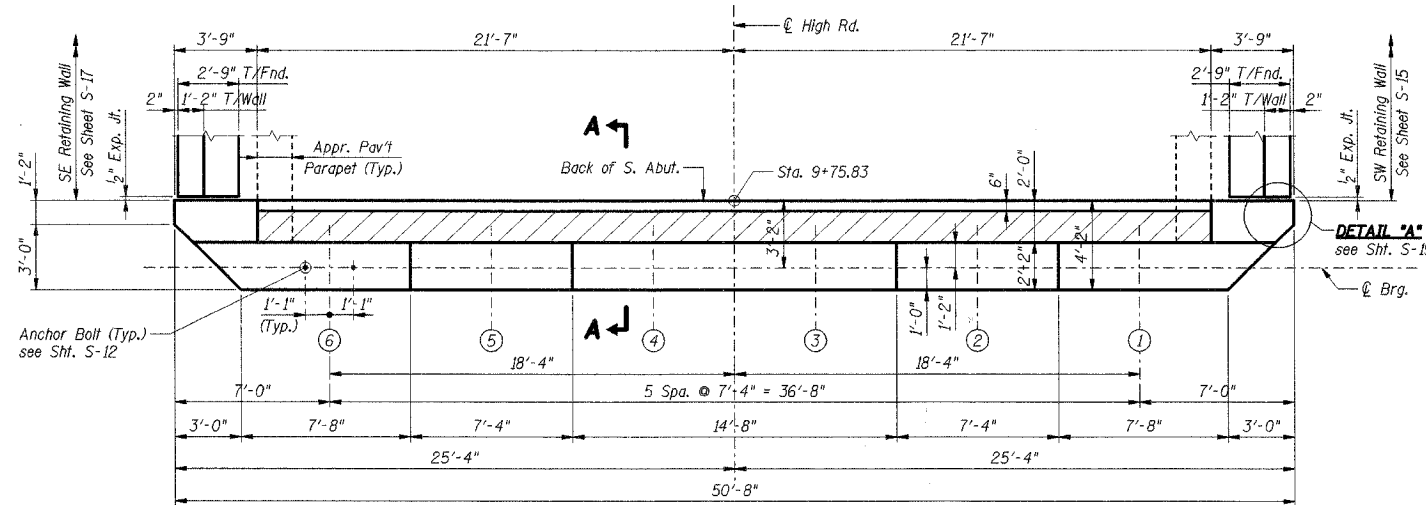
**SECTION C-C**



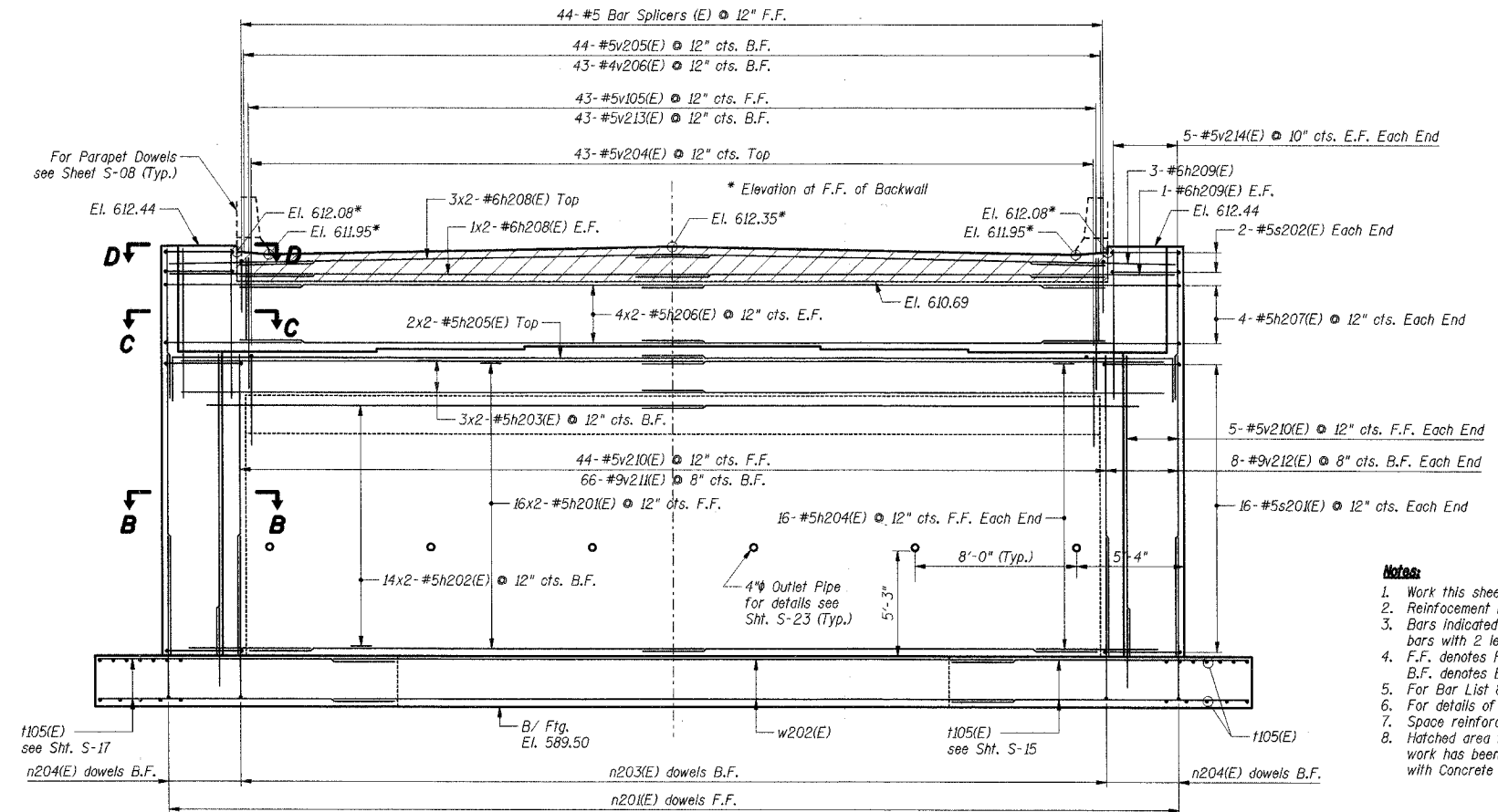
**SECTION B-B**



**SECTION A-A**



**TOP PLAN - SOUTH ABUTMENT**



**ELEVATION - SOUTH ABUTMENT**

**BEARING SEAT ELEVATIONS**

Beam	S. Abut.
1	607.10
2	607.24
3	607.39
4	607.39
5	607.24
6	607.10

**Notes:**

1. Work this sheet with Shts. S-13 thru S-24.
2. Reinforcement bars designated (E) shall be epoxy coated.
3. Bars indicated thus 16x2-#5 etc. indicates 16 lines of bars with 2 lengths per line.
4. F.F. denotes Front Face. B.F. denotes Back Face.
5. For Bar List & Bill of Material, see Sht. S-24.
6. For details of Bar Splicers, see Sht. S-26.
7. Space reinforcement in cap to miss anchor bolts.
8. Hatched area to be poured after superstructure false work has been removed. Quantity of concrete included with Concrete Superstructure.

**SHT. S-14 OF 28**

REVISIONS	
NAME	DATE

LOCKPORT TOWNSHIP HIGHWAY DEPARTMENT  
TR216A HIGH ROAD OVER LONG RUN CREEK  
SECTION 02-11106-01-BR

**SOUTH ABUTMENT PLAN, ELEVATION AND DETAILS**

SCALE: DRAWN BY: CCE  
DATE: 9-07-2007 CHECKED BY:

**TENG**

© 2007 TENG & ASSOCIATES, INC.  
300 W. MADISON AVE. SUITE 200, IL 60401  
TEL: 815.451.0000