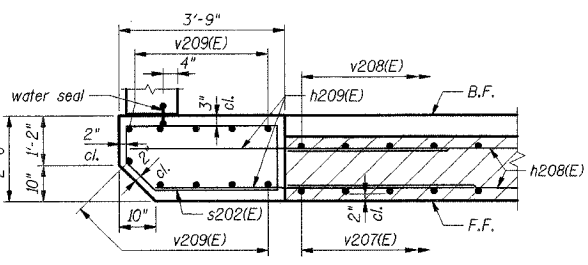
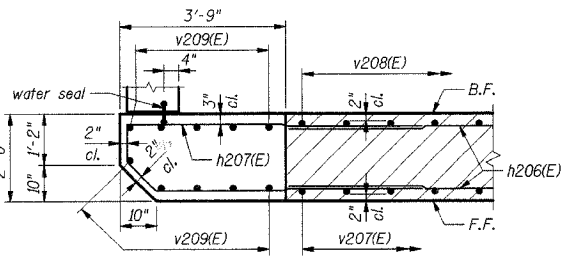


**BEARING SEAT ELEVATIONS**

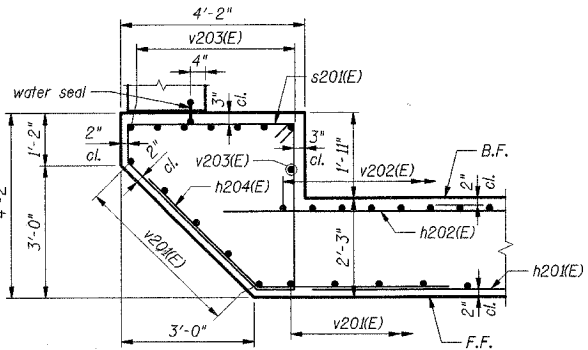
Beam	N. Abut.
1	605.30
2	605.45
3	605.60
4	605.60
5	605.45
6	605.30



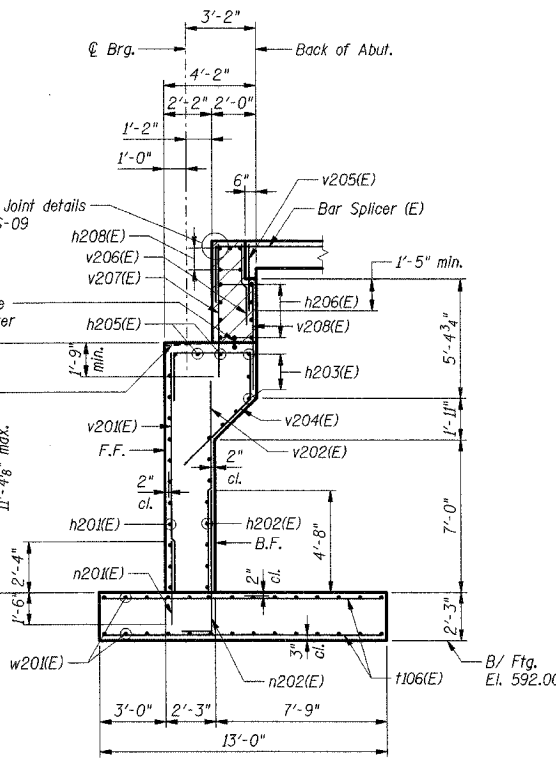
**SECTION H-H**



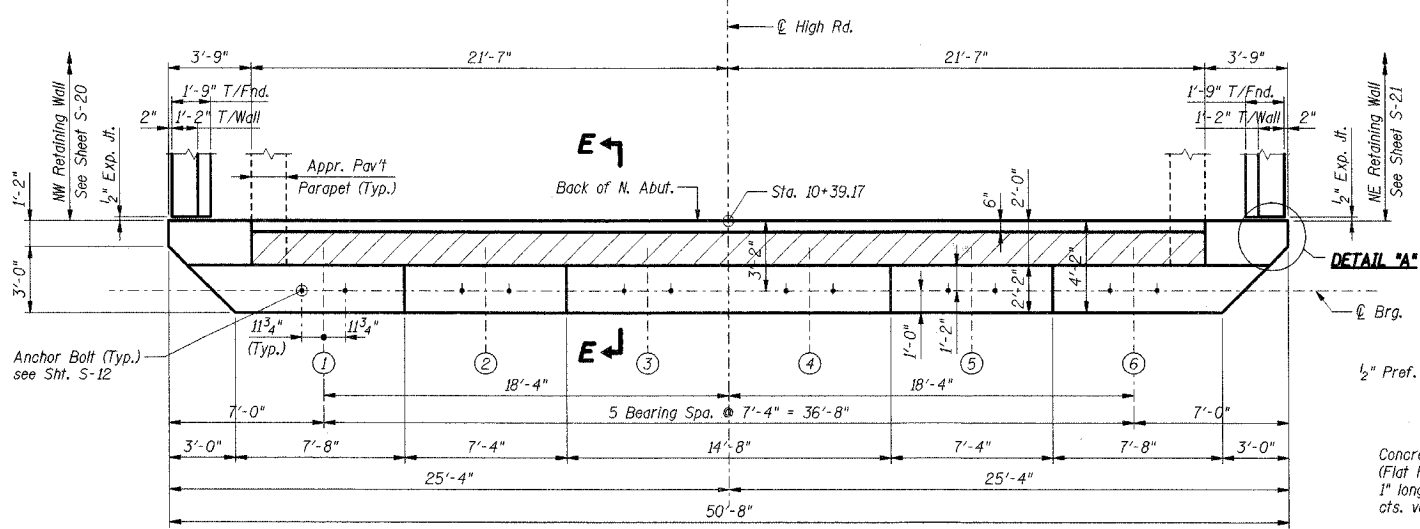
**SECTION G-G**



**SECTION F-F**

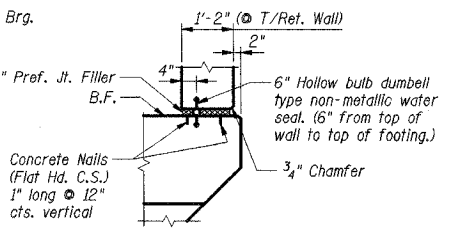


**SECTION E-E**

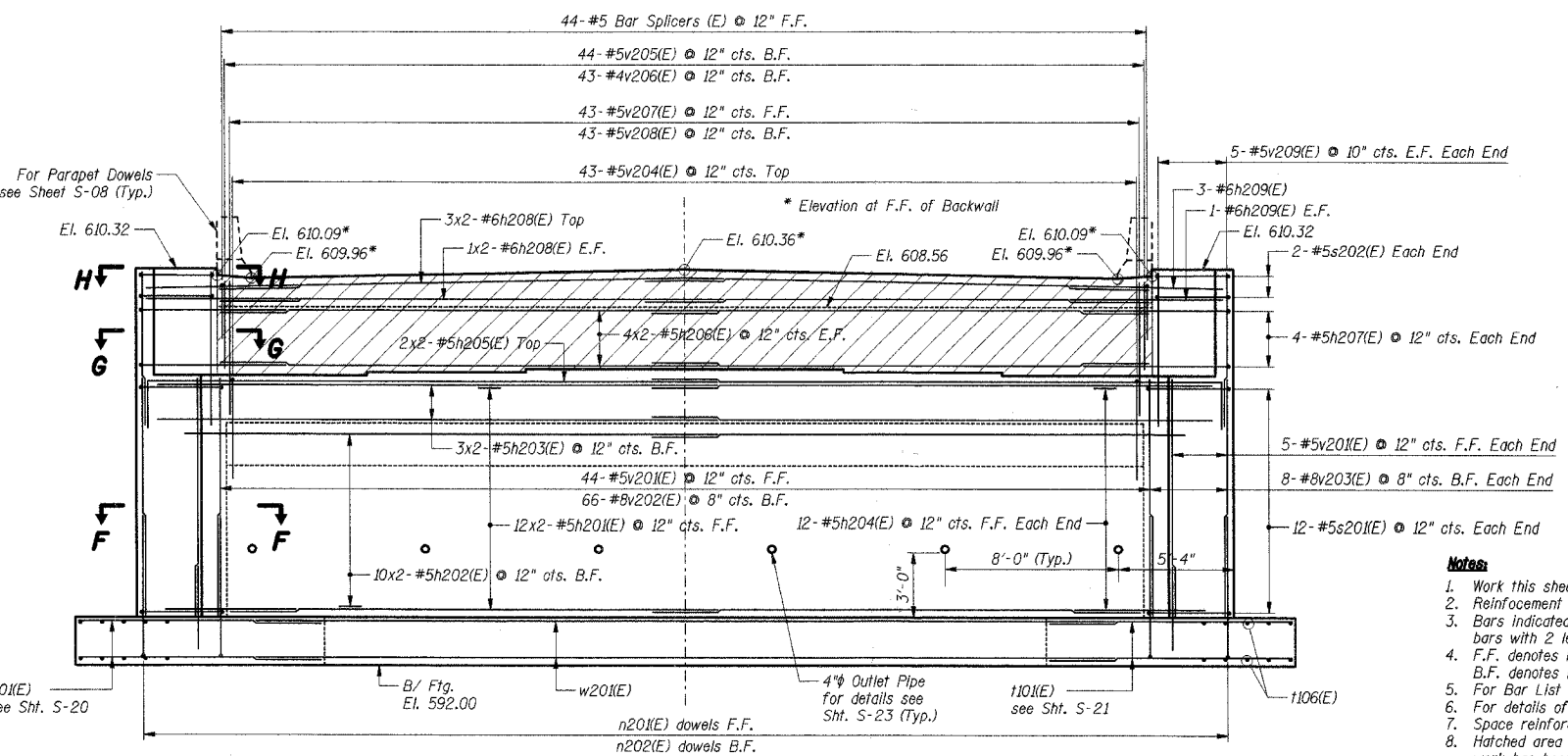


**TOP PLAN - NORTH ABUTMENT**

**DETAIL 'A'**



**DETAIL 'A'**



**ELEVATION - NORTH ABUTMENT**

- Notes**
1. Work this sheet with Shts. S-13 thru S-24.
  2. Reinforcement bars designated (E) shall be epoxy coated.
  3. Bars indicated thus 12x2-#5 etc. indicates 12 lines of bars with 2 lengths per line.
  4. F.F. denotes Front Face. B.F. denotes Back Face.
  5. For Bar List & Bill of Material, see Sht. S-24.
  6. For details of Bar Splicers, see Sht. S-26.
  7. Space reinforcement in cap to miss anchor bolts.
  8. Hatched area to be poured after superstructure false work has been removed. Quantity of concrete included with Concrete Superstructure.

**Lap Lengths**

Bar	Min. Vert. Lap	Min. Hor. Lap
#5	2'-2"	3'-0"
#6	2'-7"	3'-7"
#7	3'-5"	-
#8	4'-6"	4'-6"
#9	5'-9"	-

**SHT. S-19 OF 28**

REVISIONS	
NAME	DATE

LOCKPORT TOWNSHIP HIGHWAY DEPARTMENT  
 TR216A HIGH ROAD OVER LONG RUN CREEK  
 SECTION 02-11106-01-BR

**NORTH ABUTMENT  
 PLAN, ELEVATION AND DETAILS**

SCALE: DATE: 9-07-2007 DRAWN BY: CCE CHECKED BY:

**TENG**  
 TENG & ASSOCIATES, INC.  
 2500 S. LEXINGTON AVE. CHICAGO, IL 60608  
 TEL: 312.487.1000 FAX: 312.487.1001

S:\PROJECTS\02-11106\CONSTRUCTION\02-11106-01-BR\02-11106-01-BR.dwg  
 9-07-2007 11:38:53  
 C:\PROGRAMS\AUTOCAD\ACAD\HELP\INDEX.HTML