

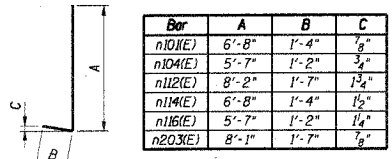
F.A. RTÉ.	SECTION	COUNTY	TOTAL SHEET NO.
		WILL	64
STA.	TO STA.		
FED. ROAD DIST. NO.	ILLINOIS	FED. AID PROJECT	
02-11106-01-BR		CONTRACT NO. 83949	

**BAR LIST**

Bar	No.		Size	Length	Shape
	S. Abut.	N. Abut.			
n101(E)	72	98	#5	33'-0"	—
n102(E)	16	80	#5	29'-8"	—
n103(E)	92		#5	24'-8"	—
n104(E)	46		#5	28'-0"	—
n105(E)	6		#5	12'-3"	—
n201(E)	32	24	#5	22'-6"	—
n202(E)	28	20	#5	24'-6"	—
n203(E)	6	6	#5	25'-10"	—
n204(E)	32	24	#5	7'-10"	—
n205(E)	4	4	#5	28'-3"	—
n206(E)	16	16	#5	23'-0"	—
n207(E)	8	8	#5	14'-6"	—
n208(E)	10	10	#6	23'-4"	—
n209(E)	10	10	#6	7'-3"	—
n101(E)		138	#8	8'-0"	—
n102(E)		62	#5	4'-8"	—
n103(E)		31	#5	4'-9"	—
n104(E)		46	#7	6'-9"	—
n105(E)		31	#5	4'-5"	—
n106(E)		31	#6	5'-8"	—
n107(E)		31	#4	3'-6"	—
n108(E)		31	#6	5'-6"	—
n109(E)		31	#4	3'-5"	—
n110(E)		31	#6	5'-5"	—
n111(E)		31	#4	3'-3"	—
n112(E)	92		#9	9'-9"	—
n113(E)	88		#5	5'-1"	—
n114(E)	57		#8	8'-0"	—
n115(E)	26		#5	4'-4"	—
n116(E)	57		#7	6'-9"	—
n117(E)	26		#5	4'-10"	—
n118(E)	38		#7	7'-7"	—
n119(E)	26		#4	4'-5"	—
n120(E)	26		#6	6'-8"	—
n121(E)	26		#4	4'-6"	—
n201(E)	54	54	#5	3'-10"	—
n202(E)		82	#8	7'-11"	—
n203(E)	66		#9	9'-8"	—
n204(E)	16		#9	9'-8"	—
s201(E)	32	24	#5	14'-3"	—
s202(E)	4	4	#5	8'-11"	—
n101(E)		276	#8	11'-2"	—
n102(E)		182	#7	6'-8"	—
n104(E)		6	#5	6'-8"	—
n105(E)	347		#8	14'-8"	—
n106(E)	107	114	#8	12'-8"	—
n107(E)	82		#8	11'-8"	—
n108(E)	8		#5	12'-8"	—
n109(E)	4		#5	11'-8"	—
n110(E)	105		#7	9'-2"	—
n111(E)	7		#5	9'-2"	—

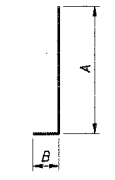
**BAR LIST**

Bar	No.		Size	Length	Shape
	S. Abut.	N. Abut.			
v101(E)		138	#8	12'-3"	—
v102(E)		62	#5	15'-1"	—
v103(E)		92	#5	7'-4"	—
v104(E)		31	#5	14'-2"	—
v105(E)	43	46	#5	6'-7"	—
v106(E)		46	#7	12'-3"	—
v107(E)		31	#5	13'-8"	—
v108(E)		46	#5	5'-8"	—
v109(E)		31	#6	6'-9"	—
v110(E)		31	#4	6'-9"	—
v111(E)		31	#6	6'-6"	—
v112(E)		31	#4	6'-6"	—
v113(E)		31	#6	6'-4"	—
v114(E)		31	#4	6'-4"	—
v115(E)	92		#9	18'-6"	—
v116(E)	62		#5	20'-3"	—
v117(E)	92		#5	6'-8"	—
v118(E)	57		#8	14'-3"	—
v119(E)	39		#5	17'-3"	—
v120(E)	38		#5	7'-7"	—
v121(E)	38		#7	9'-9"	—
v122(E)	26		#5	13'-8"	—
v123(E)	38		#5	8'-9"	—
v124(E)	38		#7	9'-10"	—
v125(E)	26		#4	9'-10"	—
v126(E)	26		#6	7'-2"	—
v127(E)	26		#4	7'-2"	—
v129(E)	19		#5	7'-2"	—
v130(E)	19		#7	11'-3"	—
v131(E)	13		#5	14'-8"	—
v132(E)	19		#5	7'-8"	—
v201(E)		54	#5	10'-10"	—
v202(E)		66	#8	10'-0"	—
v203(E)		16	#8	10'-10"	—
v204(E)	43	43	#5	11'-8"	—
v205(E)	44	44	#5	3'-0"	—
v206(E)	43	43	#4	4'-2"	—
v207(E)		43	#5	6'-4"	—
v208(E)		43	#5	5'-1"	—
v209(E)		20	#5	7'-3"	—
v210(E)	54		#5	14'-11"	—
v211(E)	66		#9	14'-1"	—
v212(E)	16		#9	14'-11"	—
v213(E)	43		#5	5'-4"	—
v214(E)	20		#5	7'-6"	—
w101(E)		48	#5	35'-0"	—
w102(E)		24	#5	25'-2"	—
w103(E)		32	#5	37'-0"	—
w104(E)		16	#5	21'-8"	—
w105(E)		8	#5	14'-1"	—
w106(E)		8	#5	17'-6"	—
w107(E)		24	#5	27'-2"	—
w108(E)	64		#5	27'-8"	—
w109(E)	54		#5	26'-8"	—
w110(E)	82		#5	12'-1"	—
w111(E)	10		#5	12'-7"	—
w112(E)	10		#5	15'-3"	—
w113(E)	10		#5	27'-10"	—
w114(E)	10		#5	24'-9"	—
w115(E)	10		#5	11'-1"	—
w116(E)	10		#5	13'-2"	—
w117(E)	10		#5	24'-8"	—
w118(E)	10		#5	21'-9"	—
w119(E)	28		#5	14'-2"	—
w120(E)	26		#5	12'-2"	—
w121(E)	26		#5	10'-7"	—
w201(E)		28	#5	39'-8"	—
w202(E)	32		#5	33'-8"	—



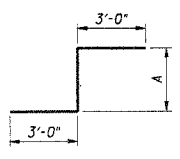
Bar	A	B	C
n101(E)	6'-8"	1'-4"	7/8"
n104(E)	5'-7"	1'-2"	3/4"
n112(E)	8'-2"	1'-7"	1 1/4"
n114(E)	6'-8"	1'-4"	1 1/2"
n116(E)	5'-7"	1'-2"	1 1/4"
n203(E)	8'-1"	1'-7"	7/8"

Bars n101(E), n104(E), n112(E), n114(E), n116(E) & n203(E)



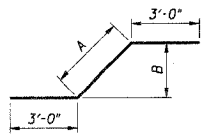
Bar	A	B
n106(E)	4'-8"	1'-0"
n108(E)	4'-6"	1'-0"
n118(E)	4'-5"	1'-0"
n120(E)	6'-5"	1'-2"
n202(E)	5'-8"	1'-0"
n204(E)	6'-7"	1'-4"
n204(E)	8'-1"	1'-7"

Bars n106(E), n108(E), n118(E), n118(E), n120(E), n202(E) & n204(E)



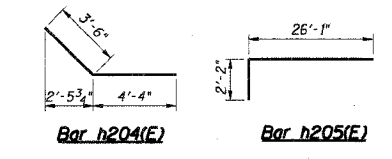
Bar	A
w105(E)	8'-1"
w110(E)	6'-1"
w111(E)	6'-7"
w115(E)	5'-1"
w121(E)	4'-7"

Bars w105(E), w110(E), w111(E), w115(E) & w121(E)

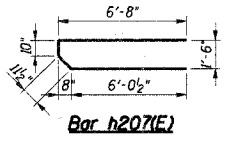


Bar	A	B
w106(E)	11'-3"	7'-11 1/2"
w112(E)	9'-3"	6'-6 1/2"
w116(E)	7'-2"	5'-1"

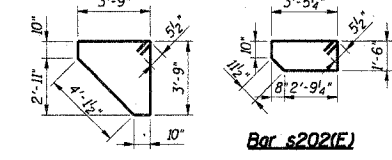
Bars w106(E), w112(E) & w116(E)



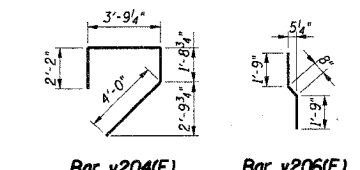
Bar n204(E) Bar n205(E)



Bar n207(E)



Bar s201(E) Bar s202(E)



Bar v204(E) Bar v206(E)

**BILL OF MATERIAL**

Item	Unit	S. Abut.	N. Abut.
Porous Granular Embankment	Cu Yd	426	326
Structure Excavation	Cu Yd	1,733	622
Rock Excavation for Structures	Cu Yd	178	92
Concrete Structures	Cu Yd	548	394
Rustication Finish	Sq Ft	2,759	2,216
Reinforcement Bars, Epoxy Coated	Pound	70,920	50,980
Bar Splicers	Each	44	44
Bridge Seat Sealer	Sq Ft	102	102
Geocomposite Wall Drain	Sq Yd	320	244
Pipe Underdrains for Structures 4"	Foot	251	276

SHT. 5-24 OF 28

REVISIONS	
NAME	DATE

LOCKPORT TOWNSHIP HIGHWAY DEPARTMENT  
TR216A HIGH ROAD OVER LONG RUN CREEK  
SECTION 02-11106-01-BR

**ABUTMENT AND RETAINING WALL  
BILL OF MATERIAL**

SCALE: \_\_\_\_\_ DRAWN BY: CCE, HBJ  
DATE: 10-19-2007 CHECKED BY: JRH

**TENG**

DATE PLOTTED: 10/19/2007 10:53:05  
C:\DOCUMENTS\2007\PROJECT\DRAWING\DWG\TR216A.DWG  
JAMES HUBBARD