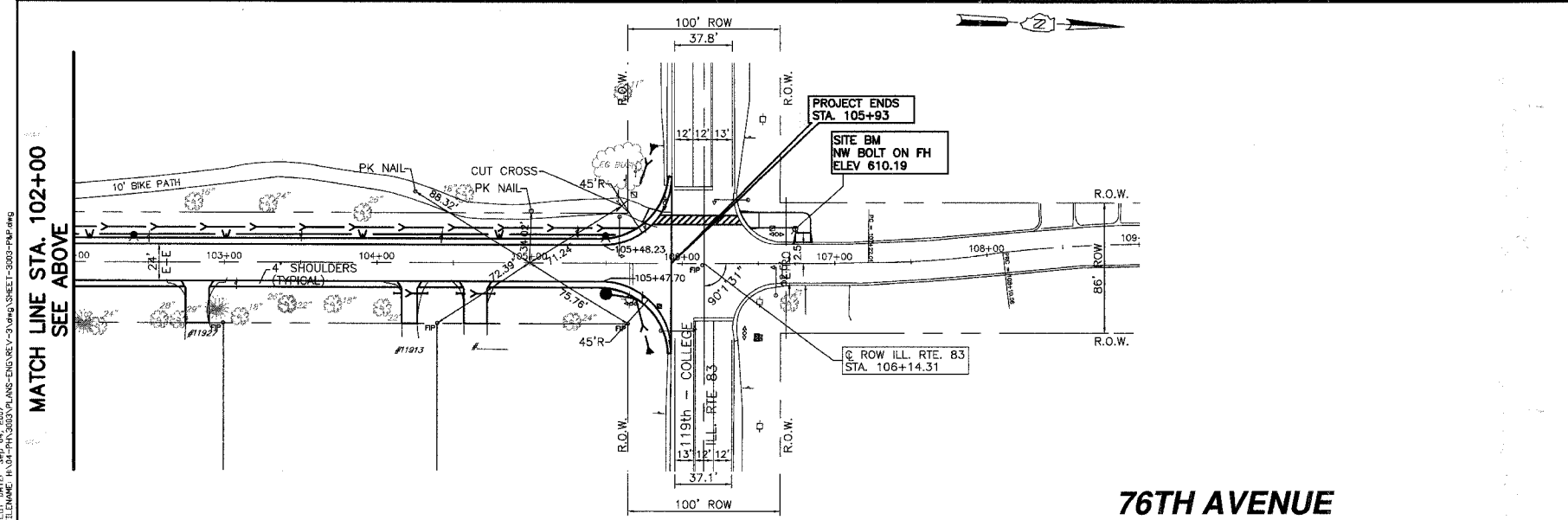
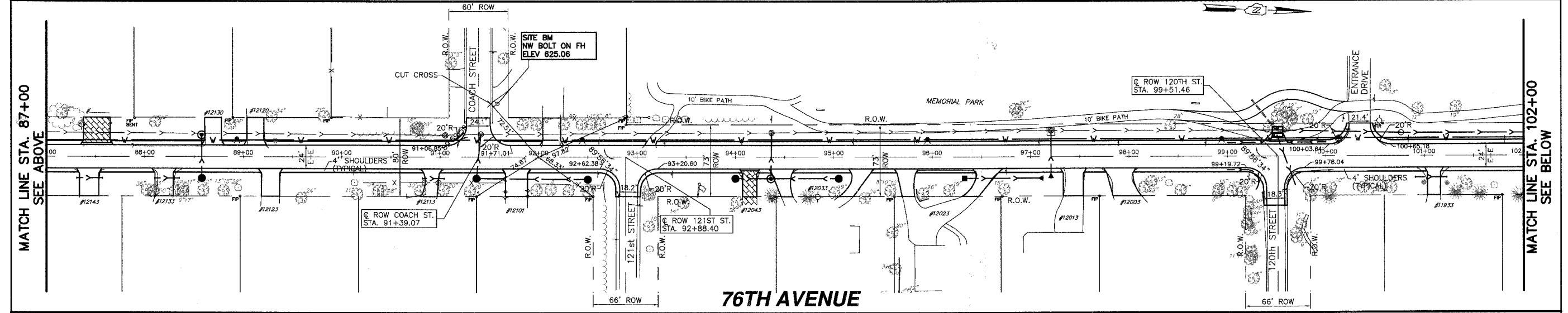
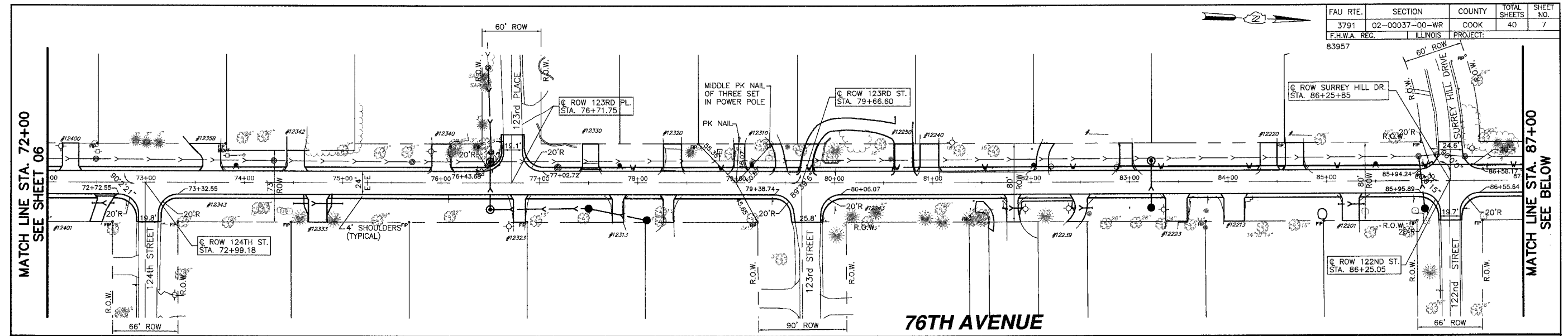


FAU RTE.	SECTION	COUNTY	TOTAL SHEETS	SHEET NO.
3791	02-00037-00-WR	COOK	40	7
F.H.W.A. REG.	ILLINOIS	PROJECT:		
83957				



MORRIS ENGINEERING, INC.
 5100 LINCOLN AVE LISLE, ILLINOIS 60532
 PHONE: (630) 271-0770 • WEBSITE: ECIVIL.COM
 LOCATION: H:\04-PH\3003\PLANS-ENG\REV-3\DWG\SHEET-3003-P&P.dwg
 DRAWN BY: CJS DESIGN BY: RAC CHECKED BY: JJV
 JOB NO.: 04-PH-3003 SCALE: 1"=50' H 1"=10' V

76TH AVENUE RECONSTRUCTION 127TH STREET TO ILLINOIS ROUTE 83 ALIGNMENT, TIES AND BENCHMARKS STA. 72+00 TO STA. 109+00				
DATE	REVISIONS	BY	SHEET	
1 5-09-07	PER IDOT REVIEW	RAC		7 OF 40 SHEETS
2 5-24-07	PER IDOT REVIEW	RAC		
3 9-04-07	PER IDOT REVIEW	RAC		
4				

PLOT DATE: 05/11/07
 FILENAME: I:\04-PH\3003\PLANS-ENG\REV-3\DWG\SHEET-3003-P&P.dwg