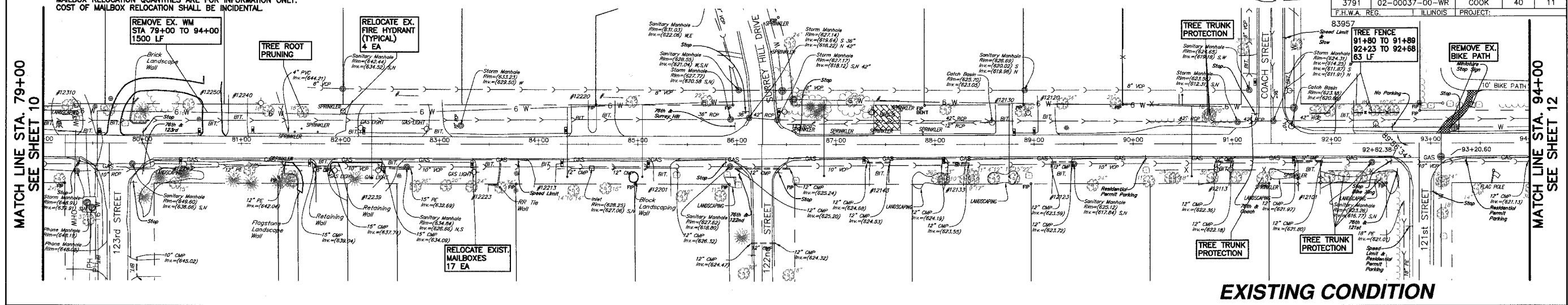
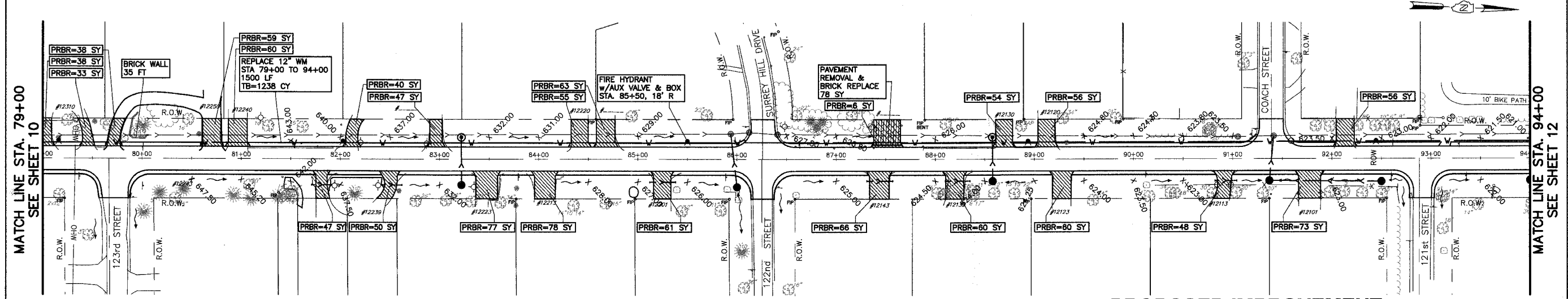


NOTE: MAILBOX RELOCATION QUANTITIES ARE FOR INFORMATION ONLY. COST OF MAILBOX RELOCATION SHALL BE INCIDENTAL.

| | | | | |
|---------------|-------------------|--------|--------------|-----------|
| FAU RTE. | SECTION | COUNTY | TOTAL SHEETS | SHEET NO. |
| 3791 | 02-00037-00-WR | COOK | 40 | 11 |
| F.H.W.A. REG. | ILLINOIS PROJECT: | | | |

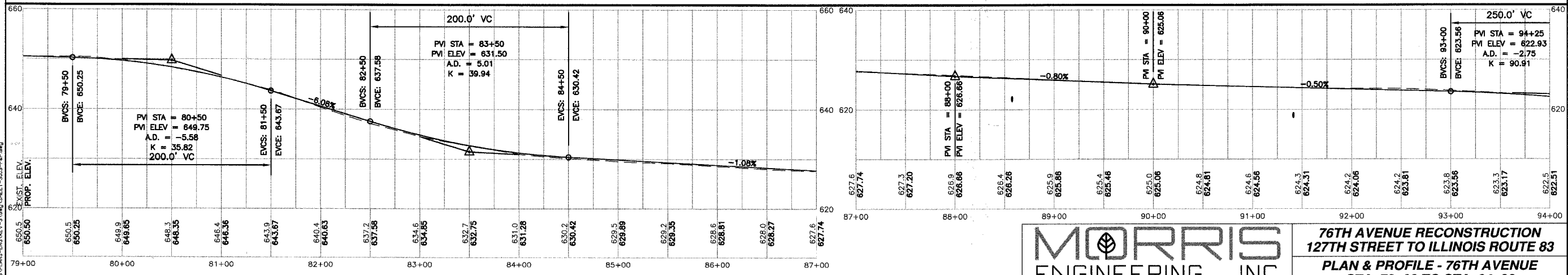


EXISTING CONDITION



76TH AVENUE

PROPOSED IMPROVEMENT



PLOT DATE: Sep 04, 2007
FILENAME: H:\04-PH\3003\PLANS-ENG\REV-3\DWG\SHEET-3003-P&P.dwg

MORRIS ENGINEERING, INC.
5100 LINCOLN AVE Lisle, ILLINOIS 60532
PHONE: (630) 271-0770 WEBSITE: ECIVIL.COM

**76TH AVENUE RECONSTRUCTION
127TH STREET TO ILLINOIS ROUTE 83
PLAN & PROFILE - 76TH AVENUE
STA. 79+00 TO STA. 94+00**

LOCATION: H:\04-PH\3003\PLANS-ENG\REV-3\DWG\SHEET-3003-P&P.dwg
DRAWN BY: CJS DESIGN BY: RAC CHECKED BY: JUV
JOB NO.: 04-PH-3003 SCALE: 1"=50' H 1"=10' V

| DATE | REVISIONS | BY | SHEET |
|-----------|-----------------|-----|---------------------------|
| 1 5-09-07 | PER IDOT REVIEW | RAC | 11 OF 40 SHEETS |
| 2 5-24-07 | PER IDOT REVIEW | RAC | |
| 3 9-04-07 | PER IDOT REVIEW | RAC | |
| 4 | | | |