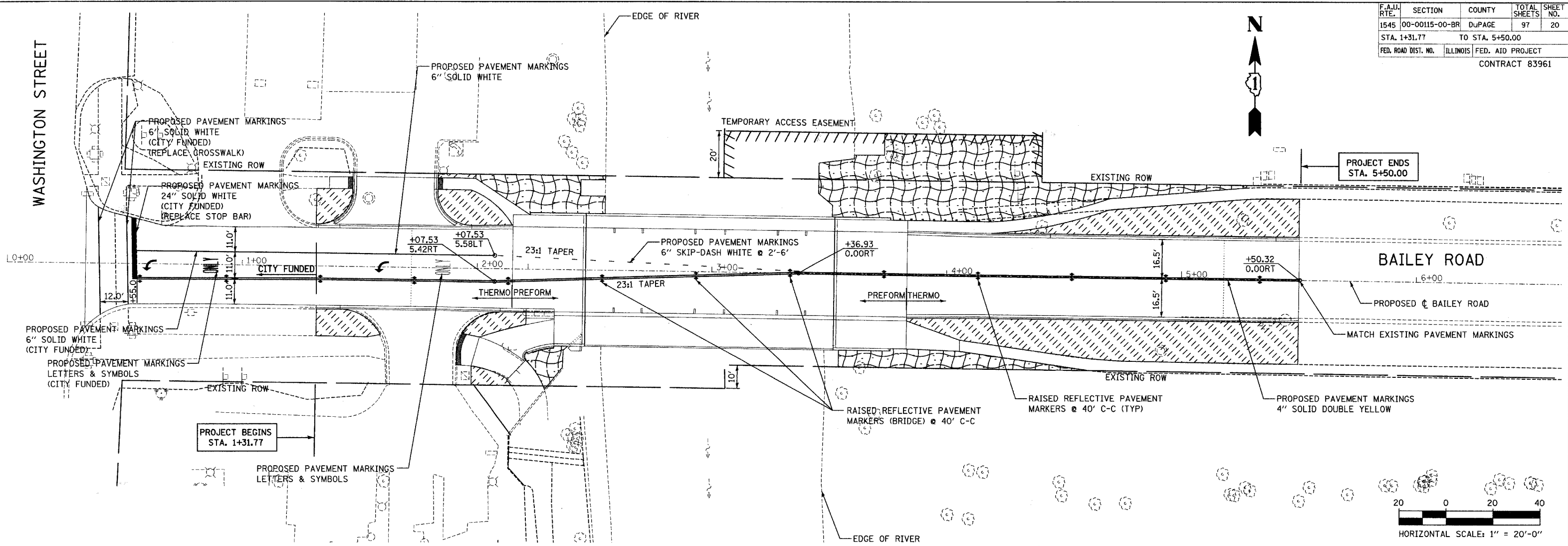


F.A.I. RTE.	SECTION	COUNTY	TOTAL SHEETS	SHEET NO.
1545	00-00115-00-BR	DUPAGE	97	20
STA. 1+31.77		TO STA. 5+50.00		
FED. ROAD DIST. NO.	ILLINOIS	FED. AID PROJECT		CONTRACT 83961



**NOTES:**

1. ALL PERMANENT PAVEMENT MARKINGS PLACED ON HMA ARE TO BE THERMOPLASTIC.
2. ALL PERMANENT PAVEMENT MARKINGS PLACED ON BRIDGE PAVEMENT ARE TO BE PREFORMED PLASTIC.

**LEGEND:**

- SEEDING, CLASS 4A - LOW PROFILE NATIVE GRASS WITH EROSION CONTROL BLANKET
- SODDING, SALT TOLERANT

REVISIONS	
NAME	DATE

BRIDGE REHABILITATION  
BAILEY ROAD OVER  
WEST BRANCH OF THE DUPAGE RIVER  
PAVEMENT MARKING AND  
SIGNING PLANS  
LANDSCAPING PLANS

CONSULTANT  
**TYLIN INTERNATIONAL**

City of **Naperville**

DRAWN: RTM	SHEET NO.
CHECKED: SP	20
APPROVED:	
DATE: JULY 13, 2007	PROJECT NO.: BHM-8003(343)
SCALE: 1"=20'-0"	
JOB NO.: C-9I-062-04	