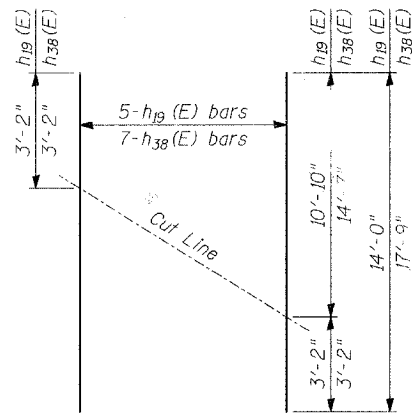


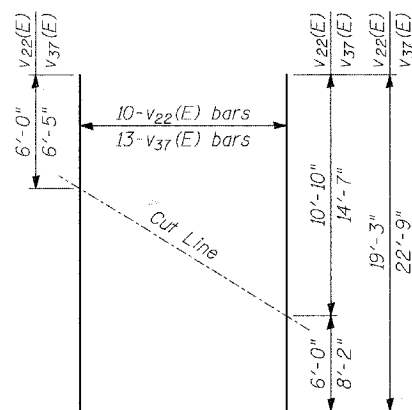
STATE OF ILLINOIS  
DEPARTMENT OF TRANSPORTATION

ROUTE NO.	SECTION	COUNTY	TOTAL SHEETS	SHEET NO.	SHEET NO. - 28
1545	*	DUPAGE	97	49	39 - SHEETS
FED. ROAD DIST. NO.		ILLINOIS	FED. AID PROJECT		CONTRACT NO. 83961
00-00115-00-BR					



**FIELD CUTTING DIAGRAM**

Order  $h_{19}(E)$  and  $h_{38}(E)$  bars full length. Cut to fit and use the remainder of bars in opposite face.



**FIELD CUTTING DIAGRAM**

Order  $v_{22}(E)$  and  $v_{37}(E)$  bars full length. Cut to fit and use the remainder of bars in opposite face.

**WEST ABUTMENT  
BILL OF MATERIAL**

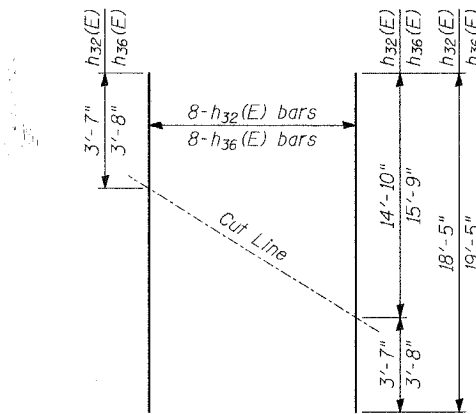
Bar No.	Size	Length	Shape
$d_2(E)$	#5	3'-3"	—
$d_{10}(E)$	#4	2'-0"	—
$d_{11}(E)$	#5	2'-2"	—
$e_{30}(E)$	#4	23'-4"	—
$h_{10}(E)$	#6	12'-2"	—
$h_{11}(E)$	#5	12'-2"	—
$h_{12}(E)$	#5	11'-2"	—
$h_{13}(E)$	#5	21'-0"	—
$h_{14}(E)$	#6	21'-3"	—
$h_{15}(E)$	#6	3'-7"	—
$h_{16}(E)$	#6	28'-6"	—
$h_{17}(E)$	#5	4'-3"	—
$h_{18}(E)$	#5	12'-8"	—
$h_{19}(E)$	#5	14'-0"	—
$h_{20}(E)$	#5	3'-8"	—
$h_{21}(E)$	#5	2'-7"	—
$h_{22}(E)$	#5	3'-7"	—
$h_{30}(E)$	#5	23'-4"	—
$h_{31}(E)$	#5	21'-1"	—
$h_{33}(E)$	#5	2'-8"	—
$h_{34}(E)$	#5	5'-7"	—
$h_{38}(E)$	#5	17'-9"	—
$h_{39}(E)$	#5	18'-6"	—
$n_{10}(E)$	#7	6'-0"	—
$n_{11}(E)$	#7	4'-5"	—
$n_{12}(E)$	#9	8'-3"	—
$p_{31}(E)$	#5	3'-6"	—
$s_{11}(E)$	#5	11'-7"	—
$s_{30}(E)$	#4	10'-5"	—
$sp_1$	#4	8'-6"	—
$sp_2$	#4	10'-4"	—
$t_{10}(E)$	#6	7'-2"	—
$v_{11}(E)$	#5	8'-1"	—
$v_{13}(E)$	#4	3'-11"	—
$v_{14}(E)$	#4	2'-9"	—
$v_{15}(E)$	#5	2'-6"	—
$v_{16}(E)$	#4	2'-8"	—

**WEST ABUTMENT  
BILL OF MATERIAL CONT.**

Bar No.	Size	Length	Shape
$v_{17}(E)$	#7	10'-4"	—
$v_{19}$	#9	11'-10"	—
$v_{20}(E)$	#5	6'-10"	—
$v_{21}(E)$	#5	13'-3"	—
$v_{22}(E)$	#5	16'-10"	—
$v_{23}$	#9	10'-0"	—
$v_{36}(E)$	#5	14'-1"	—
$v_{37}(E)$	#5	22'-9"	—
$v_{38}(E)$	#5	7'-6"	—
$w_{10}(E)$	#5	7'-11"	—
Structure Excavation	Cu Yd	134	
Rock Excavation for Structures	Cu Yd	2	
Concrete Structures	Cu Yd	63.8	
Reinforcement Bars, Epoxy Coated	Pound	9,580	
Reinforcement Bars	Pound	1,200	
Bridge Seat Sealer	Sq Ft	100	
Geocomposite Wall Drain	Sq Yd	52	
Drilled Shaft in Soil	Cu Yd	2.7	
Drilled Shaft in Rock	Cu Yd	0.5	
Porous Granular Embankment, Special	Cu Yd	69	
Bar Splicers	Each	92	
Permanent Casing	Foot	15	

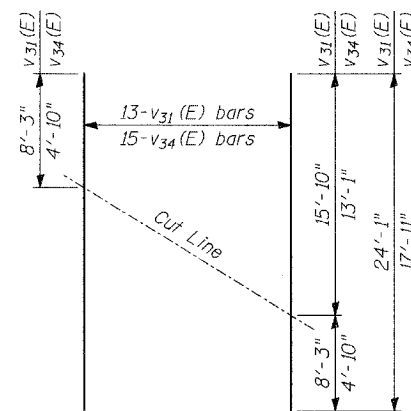
Min. lap for spirals = 1'-8".

\*\*\* Length is height of spiral.



**FIELD CUTTING DIAGRAM**

Order  $h_{32}(E)$  and  $h_{36}(E)$  bars full length. Cut to fit and use the remainder of bars in opposite face.



**FIELD CUTTING DIAGRAM**

Order  $v_{31}(E)$  and  $v_{34}(E)$  bars full length. Cut to fit and use the remainder of bars in opposite face.

**EAST ABUTMENT  
BILL OF MATERIAL**

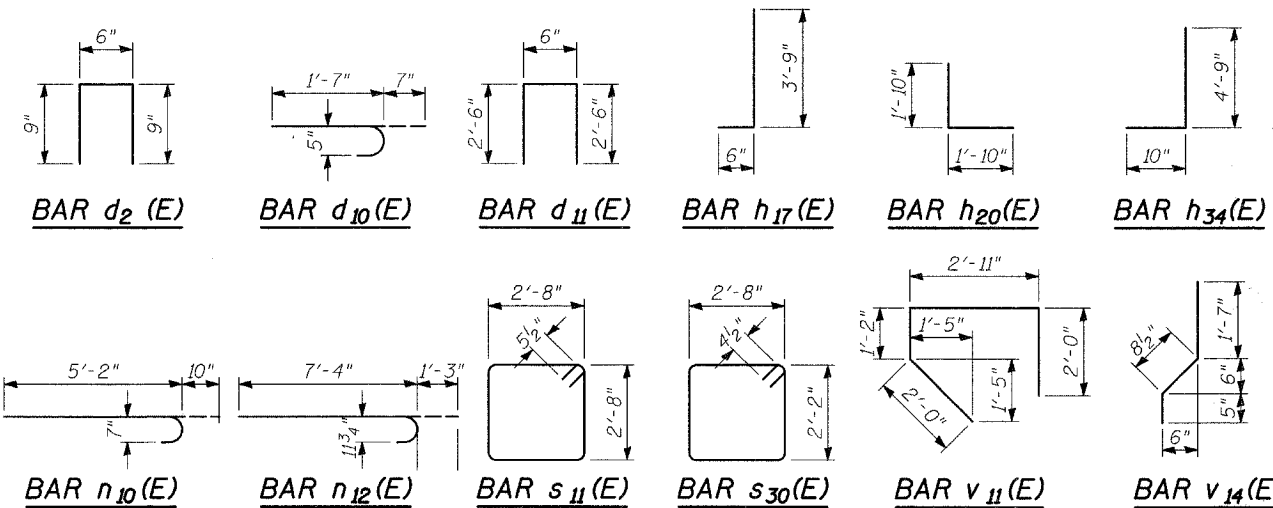
Bar No.	Size	Length	Shape
$d_2(E)$	#5	3'-3"	—
$d_{10}(E)$	#4	2'-0"	—
$d_{11}(E)$	#5	2'-2"	—
$d_{12}(E)$	#5	5'-6"	—
$e_{30}(E)$	#4	23'-4"	—
$h_{10}(E)$	#6	12'-2"	—
$h_{11}(E)$	#5	12'-2"	—
$h_{12}(E)$	#5	11'-2"	—
$h_{13}(E)$	#5	21'-0"	—
$h_{14}(E)$	#6	21'-3"	—
$h_{15}(E)$	#6	3'-7"	—
$h_{16}(E)$	#6	28'-6"	—
$h_{17}(E)$	#5	4'-3"	—
$h_{21}(E)$	#5	2'-7"	—
$h_{22}(E)$	#5	3'-7"	—
$h_{30}(E)$	#5	23'-4"	—
$h_{31}(E)$	#5	21'-1"	—
$h_{32}(E)$	#5	18'-5"	—
$h_{33}(E)$	#5	2'-8"	—
$h_{34}(E)$	#5	5'-7"	—
$h_{35}(E)$	#5	19'-1"	—
$h_{36}(E)$	#5	19'-5"	—
$h_{37}(E)$	#5	20'-0"	—
$n_{10}(E)$	#7	6'-0"	—
$n_{11}(E)$	#7	4'-5"	—
$n_{12}(E)$	#9	8'-3"	—
$p_{30}(E)$	#5	5'-5"	—
$p_{31}(E)$	#5	3'-6"	—
$s_{30}(E)$	#4	10'-5"	—
$sp$	#4	18'-3"	—
$sp_3$	#4	10'-10"	—
$sp_4$	#4	27'-9"	—

**EAST ABUTMENT  
BILL OF MATERIAL CONT.**

Bar No.	Size	Length	Shape
$t_{10}(E)$	#6	7'-2"	—
$v_{10}(E)$	#7	11'-8"	—
$v_{11}(E)$	#5	8'-1"	—
$v_{13}(E)$	#4	3'-11"	—
$v_{14}(E)$	#4	2'-9"	—
$v_{15}(E)$	#5	2'-6"	—
$v_{16}(E)$	#4	2'-8"	—
$v_{18}$	#9	17'-10"	—
$v_{24}$	#9	10'-6"	—
$v_{25}$	#9	27'-5"	—
$v_{30}(E)$	#5	7'-6"	—
$v_{31}(E)$	#5	24'-1"	—
$v_{32}(E)$	#5	17'-2"	—
$v_{33}(E)$	#5	14'-5"	—
$v_{34}(E)$	#5	17'-11"	—
$v_{35}(E)$	#5	4'-9"	—
$w_{10}(E)$	#5	7'-11"	—
Structure Excavation	Cu Yd	143	
Rock Excavation for Structures	Cu Yd	6	
Concrete Structures	Cu Yd	73.7	
Reinforcement Bars, Epoxy Coated	Pound	11,850	
Reinforcement Bars	Pound	4,080	
Bridge Seat Sealer	Sq Ft	100	
Geocomposite Wall Drain	Sq Yd	60	
Drilled Shaft in Soil	Cu Yd	12.1	
Drilled Shaft in Rock	Cu Yd	1.0	
Porous Granular Embankment, Special	Cu Yd	79	
Bar Splicers	Each	94	
Permanent Casing	Foot	67	

Min. lap for spirals = 1'-8".

\*\*\* Length is height of spiral.



TYLIN INTERNATIONAL

DESIGNED	PL,SNB
CHECKED	SP
DRAWN	SNB
CHECKED	SP

**WEST AND EAST ABUTMENT REINFORCING**

BAILEY ROAD OVER THE  
WEST BRANCH OF THE DUPAGE RIVER  
FAU 1545  
SECTION 00-00115-00-BR STA. 2+99.15  
DUPAGE COUNTY  
S.N. 022-3028